

On-line Table 1: Vascular risk factors in study sample (n = 130)^a

Risk Factors	
BMI (kg/m ²)	27.3 ± 3.7
Current smoker	15%
Hypertension	90%
Hyperlipidemia	93%
Diabetes	19%
Metabolic syndrome	52%

Note—BMI indicates body mass index.

^a Values are presented as mean ± SD or %.

On-line Table 2: Sensitivity analysis of the association between carotid atherosclerosis and ICAS burden

ICAS Burden (b-value) ^a (95% CI)	
cIMT, per +0.1 mm	0.50 (0.04 to 0.97)
cIMT quartiles	
Quartile 1	0 (Reference)
Quartile 2	0.93 (−1.98–3.83)
Quartile 3	0.35 (−2.62–3.33)
Quartile 4	2.85 (−0.02–5.72)
Carotid stenosis	
No stenosis	0 (Reference)
1%–49% stenosis	2.06 (−0.37–4.50)
50%–100% stenosis	6.23 (1.94–10.52)

^a B-values are unstandardized linear regression coefficients adjusted for age, sex, and time interval between carotid sonography and 7T MR imaging.

On-line Table 3: Sensitivity analysis of the association between ABI and ICAS burden

ICAS Burden (b-value) ^a (95% CI)	
ABI, per +0.1 in ratio	−0.34 (−0.89–0.2)
ABI > 0.9	0 (Reference)
ABI ≤ 0.9	5.08 (2.00–8.16)

^a B-values are unstandardized linear regression coefficients adjusted for age, sex, and time interval between ABI measurement and 7T MR imaging.

On-line Table 4: Sensitivity analysis of the association between renal function and ICAS burden

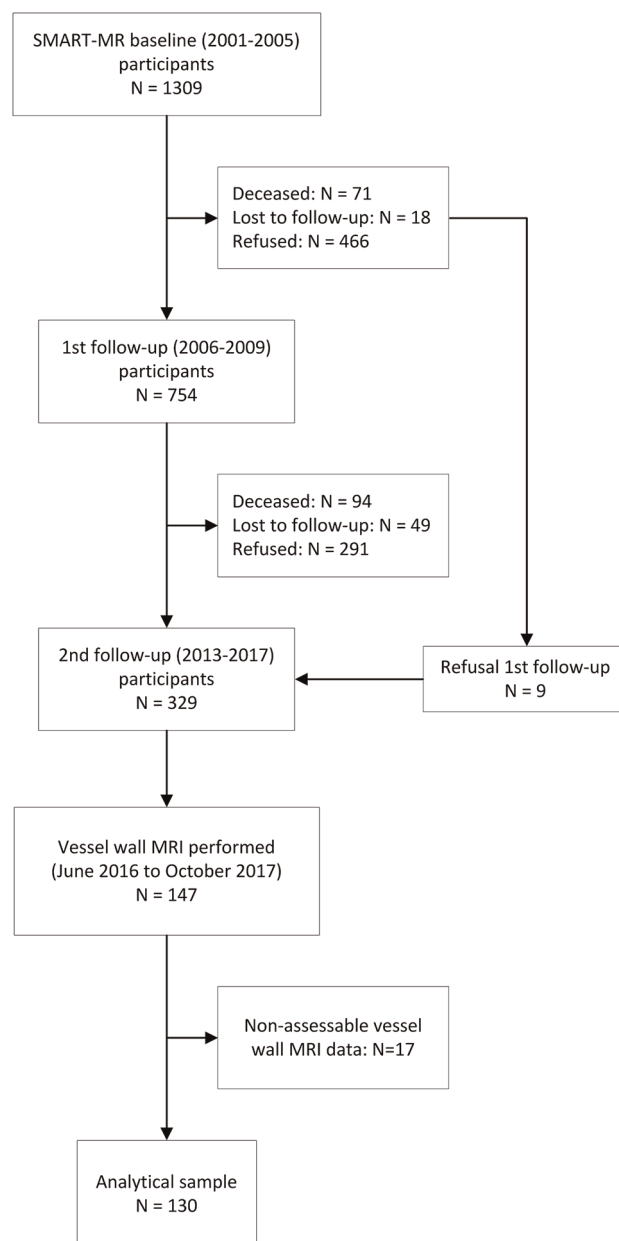
ICAS Burden (b-value) ^a (95% CI)	
eGFR, per +10 mL/min	−0.78 (−1.50 to −0.06)
eGFR ≥60 mL/min	0 (Reference)
eGFR <60 mL/min	3.02 (0.31–5.72)

^a B-values are unstandardized linear regression coefficients adjusted for age, sex, and time interval between eGFR measurement and 7T MR imaging.

On-line Table 5: Sensitivity analysis of the association between history of vascular disease and ICAS burden

ICAS Burden (b-value) ^a (95% CI)	
Coronary artery disease	0 (Reference)
Peripheral artery disease	0.09 (−3.66–3.84)
Cerebrovascular disease	0.55 (−2.94–4.04)
Multivascular disease	1.93 (−0.73–4.59)

^a B-values are unstandardized linear regression coefficients adjusted for age, sex, and time interval between ECAS and ICAS measurement. Categories are mutually exclusive.

**ON-LINE FIG.** Flowchart of the study sample.