



## Discover Generics

Cost-Effective CT & MRI Contrast Agents



FRESENIUS  
KABI

WATCH VIDEO

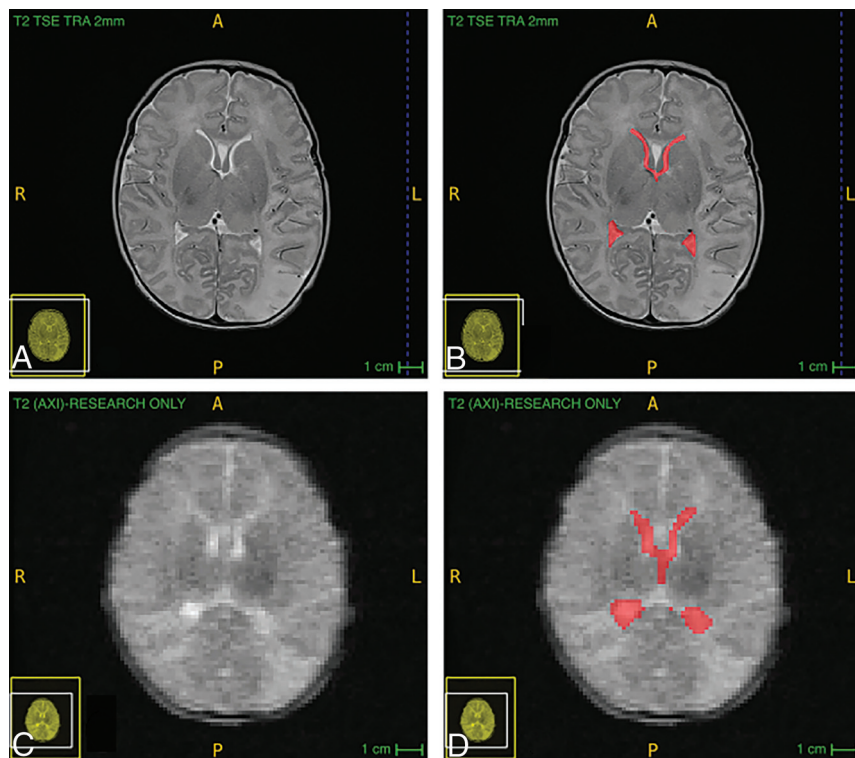
### Erratum

# AJNR

*AJNR Am J Neuroradiol* published online 17 March 2025  
<http://www.ajnr.org/content/early/2025/03/13/ajnr.A8711>

This information is current as  
of June 19, 2025.

In the article, “Low-Field Portable MR Imaging to Evaluate Ventricular Volumes: A Single-Center Retrospective Study” published in the August 2024 issue of *AJNR* (2024;45:1076–80; DOI: 10.3174/ajnr.A8269), Figs 1B and 1C were mislabeled. The correct image is shown below. The authors regret the error.



**FIG 1.** Comparison of SOC and portable clinical MR imaging as well as examples of manual segmentation in 1 participant, a 4-day-old boy without intracranial abnormalities such as ischemia or hemorrhage. Segmentation at 1 level of the lateral ventricles is shown here; SOC (A), SOC with segmentation (B), portable (C), portable with segmentation (D). Hyperfine scans were acquired with software, Version 8.1.0.1. TRA indicates transaxial; TSE, turbo spin echo; AXI, axial; R, right; L, left; P, posterior; A, anterior.

<http://dx.doi.org/10.3174/ajnr.A8711>