



Discover Generics

Cost-Effective CT & MRI Contrast Agents



WATCH VIDEO

AJNR

This information is current as of June 10, 2025.

MRI Features of Aquaporin-4 Antibody–Positive Longitudinally Extensive Transverse Myelitis: Insights into the Diagnosis of Neuromyelitis Optica Spectrum Disorders

C.G. Chee, K.S. Park, J.W. Lee, H.W. Ahn, E. Lee, Y. Kang and H.S. Kang

AJNR Am J Neuroradiol published online 15 February 2018
<http://www.ajnr.org/content/early/2018/02/15/ajnr.A5551>

MRI Features of Aquaporin-4 Antibody–Positive Longitudinally Extensive Transverse Myelitis: Insights into the Diagnosis of Neuromyelitis Optica Spectrum Disorders

C.G. Chee, K.S. Park, J.W. Lee, H.W. Ahn, E. Lee, Y. Kang, and H.S. Kang

ABSTRACT

BACKGROUND AND PURPOSE: Longitudinally extensive transverse myelitis is a well-documented spinal manifestation of neuromyelitis optica spectrum disorders, however, other forms of nontumorous myelopathy can also manifest as longitudinally extensive transverse myelitis. Our aim was to evaluate the MR imaging features of aquaporin-4 antibody–positive longitudinally extensive transverse myelitis, which is strongly associated with neuromyelitis optica spectrum disorders.

MATERIALS AND METHODS: We evaluated cervicomedullary junction involvement, cord expansion ratios, bright spotty lesions, the number of involved segments, skipped lesions, enhancement patterns, and axial distribution patterns using spinal MR imaging of 41 patients with longitudinally extensive transverse myelitis who underwent aquaporin-4 antibody testing. Univariate logistic regression analysis was performed to identify factors associated with aquaporin-4 antibody seropositivity, which were then used to develop a scoring system for diagnosing aquaporin-4 antibody–positive longitudinally extensive transverse myelitis. Interrater reliability for cord expansion ratio measurement and bright spotty lesions was determined using intraclass correlation coefficients and κ values, respectively.

RESULTS: Fifteen patients with longitudinally extensive transverse myelitis were aquaporin-4 antibody–positive. Sex (female), cervicomedullary junction involvement, a cord expansion ratio of >1.4 , and bright spotty lesions were significantly associated with aquaporin-4 antibody seropositivity. The sensitivity and specificity of the scoring system were 73.3% and 96.2%, respectively. The interclass correlation value for the cord expansion ratio was 0.78, and the κ value for bright spotty lesions was 0.61.

CONCLUSIONS: Our scoring system, based on cervicomedullary junction involvement, higher cord expansion ratio, bright spotty lesions, and female sex, can facilitate the timely diagnosis of neuromyelitis optica spectrum disorders.

ABBREVIATIONS: AQP4 = aquaporin-4; LETM = longitudinally extensive transverse myelitis; NMO = neuromyelitis optica; NMOSD = neuromyelitis optica spectrum disorders

Longitudinally extensive transverse myelitis (LETM) is a well-documented spinal manifestation of neuromyelitis optica (NMO) that presents as a hyperintense spinal cord lesion extending over ≥ 3 vertebral levels on sagittal T2-weighted spinal MR imaging.¹ NMO is an inflammatory central nervous system disorder that differs from multiple sclerosis and is associated with the presence of the serum aquaporin-4 (AQP4) antibody as a highly specific feature.^{1–3} It is currently understood as a spectral disorder, and the International Panel for NMO Diagnosis has redefined the disease entity as NMO spectrum disorders (NMOSD).

NMOSD is stratified further according to the presence of the AQP4 antibody. LETM is a diagnostic criterion for NMOSD⁴; however, other forms of nontumorous myelopathy, such as acute transverse myelitis (idiopathic) or viral myelitis, can also manifest as LETM. There is limited clinical or laboratory information regarding the initial presentation of LETM, which is crucial for diagnosing NMOSD. A long turnaround time (days to weeks) for serologic assay results for the AQP4 antibody further delays the diagnosis of NMOSD. Yet, recent studies demonstrating the beneficial effects of rituximab, plasma exchange, or lymphocytapheresis combined with steroid therapy^{5–9} have emphasized the importance of early diagnosis and timely treatment of NMOSD.

A recent report by Pekcevik et al¹⁰ has suggested that characteristic MR imaging findings may help differentiate NMOSD from other pathologies associated with LETM. Yet, the study by Pekcevik et al used criteria-based diagnosis, excluded acute

Received July 19, 2017; accepted after revision November 29.

From the Departments of Radiology (C.G.C., J.W.L., H.W.A., E.L., Y.K., H.S.K.) and Neurology (K.S.P.), Seoul National University Bundang Hospital, Gyeonggi-do, Korea.

Choong Guen Chee and Kyung Seok Park contributed equally to this work.

Please address correspondence to Joon Woo Lee, MD, PhD, Department of Radiology, Seoul National University Bundang Hospital, 82 Gumi-ro, 173 Beon-gil, Bundang-gu, Seongnam-si, Gyeonggi-do, 13620, Korea; e-mail: joonwoo2@gmail.com

<http://dx.doi.org/10.3174/ajnr.A5551>

transverse myelitis and seronegative NMOSD, and included certain diagnoses based on MR imaging and the clinical setting, such as spinal arteriovenous fistula and acute spinal infarction.

The purpose of our study was to evaluate the imaging features of AQP4-positive LETM, which is highly associated with NMOSD, and to develop a scoring system for diagnosing AQP4-positive LETM on the basis of MR imaging findings. Furthermore, we investigated quantitatively measurable image characteristics and provided interobserver agreement for subjective MR imaging interpretation.

MATERIALS AND METHODS

Study Overview

This retrospective observational study was conducted in an urban teaching hospital. The institutional review board approved the study and waived the requirement for informed consent.

Patients

We retrospectively reviewed adult (16 years of age or older) patients who had undergone spinal MR imaging between December 2004 and September 2014 and who had initially presented with myelopathy. Patients with MR imaging findings or a clinical course consistent with spinal dural arteriovenous fistula or spinal infarction were excluded. We identified 43 consecutive patients with hyperintense spinal cord lesions extending over ≥ 3 vertebral levels on sagittal T2-weighted spinal MR imaging. All patients' sera were tested for the presence of the AQP4 antibody at the Weatherall Institute of Molecular Medicine (John Radcliffe Hospital, Oxford, UK) using a cell-based assay.¹¹ One patient's MR imaging findings were determined to be artifactual after short-term follow-up MR imaging. One patient who had undergone the initial MR imaging outside the hospital had not undergone axial imaging. After we excluded these 2 patients, 41 patients were included in our analysis. When available, we also reviewed any brain MR imaging results obtained within an 8-week interval of spinal MR imaging.

MR Image Acquisition

MR imaging was performed using a 1.5T or 3T scanner (Achieva; Philips Healthcare, Best, the Netherlands) with a 16-channel neurovascular coil for the 3T imager and a head neck coil for the 1.5T imager. Parameters for individual sequences were as follows: for sagittal T1-weighted TSE images: voxel size = $0.5 \times 0.5 \times 3.0$ mm³; TR = 480–550 ms; TE = 10–15 ms; echo-train length = 6; slice thickness = 3.0 mm; slice gap = 0.3 mm; NEX = 1–2; for sagittal T2-weighted TSE images: voxel size = $0.5 \times 0.5 \times 3.0$ mm³; TR = 2700–3500 ms; TE = 120 ms; echo-train length = 28–32; slice thickness = 3.0 mm; slice gap = 0.3 mm; NEX = 2–3; for axial T2-weighted TSE images: voxel size = $0.7 \times 0.7 \times 6.0$ mm³; TR = 2700–3500 ms; TE = 120 ms; echo-train length = 25–32; slice thickness = 6.0 mm; slice gap = 2.0 mm; NEX = 2. For selected cases, additional thin-section axial TSE images were obtained with the following parameters: voxel size = $0.7 \times 0.7 \times 3.0$ mm³; TR = 2700–3500 ms; TE = 120 ms; echo-train length = 25–32; slice thickness = 3.0 mm; slice gap = 0.3 mm; NEX = 2. For patients who underwent the initial MR imaging outside our



FIG 1. Sagittal T2-weighted spinal MR imaging of a 36-year-old woman with LETM. The lesion extends beyond the imaginary line (dashed line) connecting the inferior cortex of the C1 anterior and posterior arches. Cervicomedullary junction involvement is present.

hospital, images were imported into our PACS system. These imported MR images had been obtained at diverse hospitals using various MR imaging scanners and different protocols.

MR Image Assessment

Radiologists were blinded to all patient and clinical data. Cervicomedullary junction involvement was defined as the main or separate lesion involving the uppermost cervical spinal cord at the level of the medulla oblongata. An imaginary line connecting the inferior cortex of the C1 anterior and posterior arches on sagittal T2WI was used as the lower border (Fig 1), and the pontomedullary junction was used as an upper border. Cord expansion was independently measured on sagittal T2WI by 2 radiologists with 5 and 3 years of experience, respectively. Values were averaged for the analysis. Only MR images obtained during the acute/early stage of disease (within 2 months of onset)¹² were used for measurement. The ratio of cord expansion was measured as the anteroposterior diameter of the most swollen spinal cord segment to the anteroposterior diameter of the noninvolved spinal cord in the cranial direction on sagittal T2WI (Fig 2). The diameters were measured in millimeters to an accuracy of 1 decimal digit. If LETM extended to the level of the foramen magnum, the ratio was not useful for representing cord expansion due to an anatomic



FIG 2. Sagittal T2-weighted spinal MR imaging of a 43-year-old man with LETM. Cord expansion ratio is measured as the anteroposterior diameter of the most swollen spinal cord segment (*solid line*) to the anteroposterior diameter of the noninvolved spinal cord in the cranial direction (*dotted line*). Two independent readers measured the cord expansion ratio as 1.65 and 1.71.

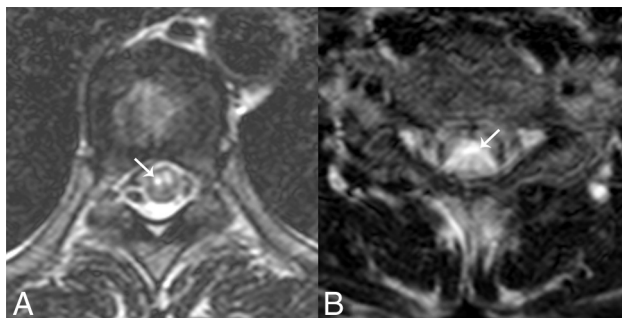


FIG 3. Two examples of bright spotty lesions (*white arrows*) in axial T2-weighted spinal MR imaging. Two independent readers judged the lesions as positive.

increase in the anteroposterior diameter of the medulla oblongata; thus, ratios were not measured in such cases. Ratio values were dichotomized with a cutoff value to maximize the sum of the sensitivity and specificity.

Bright spotty lesions were defined as lesions that were visually hyperintense or of equal signal intensity to the surrounding CSF on axial T2WI (Fig 3).¹³ Two radiologists independently judged the presence of bright spotty lesions. Suspicious or indeterminate cases were interpreted as having negative findings. In cases of discordance, a consensus reading was performed and used for further statistical analyses. The number of involved segments and the presence of skipped lesions were evaluated. If available, enhancement patterns were assessed by visual inspection and graded as involving >50%, involving <50%, or showing no enhancement. Axial distribution was classified as centrally lo-

cated, peripherally located, or both. Whether the cord involvement was greater or less than 50% of the cord in the axial plane was evaluated.

Statistical Analysis

A univariate logistic regression analysis was performed to identify factors associated with the presence of confirmed AQP4 antibody–positive status. Key factors for the logistic regression analysis were predefined in accordance with previous studies (brain stem involvement, cord expansion, and bright spotty lesions).^{10,12,14} We did not perform a multivariable logistic regression analysis, given the small sample size. Factors that were significantly associated with AQP4 seropositivity were used to generate a scoring system for predicting AQP4 antibody status. Optimal cutoff values that maximized the sum of sensitivity and specificity were used as a threshold. Sensitivity and specificity of the scoring system were measured; interobserver reliability for the measurement of cord expansion was evaluated by using the intraclass correlation coefficient derived from a 2-way mixed-effects model, while interobserver agreement for judging the presence of bright spotty lesions was evaluated using κ values. A 2-sided P value < .05 was considered statistically significant. All statistical analyses were performed using STATA 13.1 (StataCorp, College Station, Texas).

RESULTS

Of the 41 patients with LETM, 18 were female and 23 were male. The mean age of the patients at the time the spinal MR imaging was obtained was 45 years (age range, 16–72 years). Fifteen patients (15/41, 36.6%) were seropositive for AQP4 antibodies. If we excluded 4 patients who did not undergo tests for an oligoclonal band, all 37 patients were negative for oligoclonal band test. According to the recent diagnostic criteria by Wingerchuk et al,⁴ all 15 patients in the AQP4 antibody–positive group could be diagnosed as having NMOSD, while only 3 of 26 patients (11.5%) in AQP4 antibody–negative group had it. Seventeen patients underwent 1.5T spine MR imaging, and 24 patients underwent 3T spine MR imaging. Imaging in 9 patients was performed at outside institutions. The ethnicity of the study population was exclusively Asian. The median time interval between the initial symptom to MR imaging study was 14 days (interquartile range, 3–30 days). Patient characteristics in each group are summarized in Table 1. Thirty-six patients completed brain MR imaging within 2 months after the first attack of myelitis symptoms. Sixteen patients showed suspected demyelinating lesions, and 2 patients had findings suspicious for meningitis. Five patients had a history of optic neuritis preceding the initial symptoms of suspected myelopathy.

Spinal MR imaging findings in the AQP4 antibody–positive and AQP4 antibody–negative groups are shown in Table 2. The cord expansion ratio was measured in 32 patients, excluding 5 patients with dates of onset of >2 months before the MR imaging and 4 patients with medulla oblongata involvement. The mean value of the cord expansion ratio was not different whether symptom onset was within 2 months or 15 days (Table 2). Cord expansion ratios were dichotomized using a cutoff value of 1.4. Regression analysis showed that female sex, cervicomedullary junction involvement, a cord expansion ratio of >1.4, and the presence of bright

Table 1: Patient characteristics (n = 41)^a

Characteristic	AQP4 Antibody-Positive Group (n = 15)	AQP4 Antibody-Negative Group (n = 26)
Age (mean) (yr)	48 ± 13	42 ± 12
Female	13 (87%)	5 (19%)
Ethnicity	Asian (100%)	Asian (100%)
Time interval from first attack to MRI study (median) (interquartile range) (days)	10 (3–21)	14 (5–30)
1–15 days	10 (67%)	14 (54%)
16–30 days	3 (20%)	6 (23%)
31–60 days	1 (1%)	2 (8%)
>60 days	1 (1%)	4 (15%)
Brain involvement	8 (53%)	10 (38%)
Preceding optic neuritis	4 (27%)	1 (4%)

^a Data are number and percentage unless otherwise indicated.

Table 2: Spinal MRI findings in AQP4 antibody-positive and -negative groups^a

Imaging Features	AQP4 Antibody-Positive Group (n = 15)	AQP4 Antibody-Negative Group (n = 26)
Cervicomedullary junction involvement	9 (60%)	6 (23%)
Medulla oblongata involvement	4 (27%)	1 (4%)
Cord expansion ratio (mean) (onset ≤2 months) ^b	1.35 ± 0.15	1.24 ± 0.15
Cord expansion ratio (mean) (onset ≤15 days) ^c	1.34 ± 0.17	1.24 ± 0.17
Bright spotty lesion		
Negative	1 (7%)	18 (69%)
Positive	14 (93%)	8 (31%)
Involved segment		
Cervical	5 (33%)	7 (27%)
Cervicothoracic	8 (53%)	5 (19%)
Thoracic	2 (13%)	10 (38%)
Thoracolumbar	0 (0%)	1 (4%)
Holocord	0 (0%)	3 (12%)
No. of segments involved (mean)	9 ± 4	7 ± 4
Axial distribution		
Central	10 (67%)	21 (81%)
Peripheral	4 (27%)	4 (15%)
Both	1 (7%)	1 (4%)
>Half of the cord area	12 (80%)	24 (92%)
Enhancement		
No enhancement	4 (27%)	6 (23%)
<50% enhancement	9 (60%)	17 (65%)
>50% enhancement	0 (0%)	0 (0%)
Not available	2 (13%)	3 (12%)

^a Data are number and percentage unless otherwise indicated.

^b Cord expansion ratio was measured only for 32 patients.

^c Cord expansion ratio was measured only for 22 patients.

Table 3: Univariable logistic regression analysis

Variable	OR (95% CI)	P Value
Sex		
Male	Reference	
Female	3.3 (1.5–5.1)	<.001
Cervicomedullary involvement		
Absent	Reference	
Present	1.6 (0.2–3.0)	.02
Bright spotty lesion		
Negative	Reference	
Positive	3.4 (1.3–5.6)	.002
Cord expansion ratio		
≤1.4	Reference	
>1.4	2.1 (0.5–3.7)	.01

spotty lesions on T2WI were significantly associated with AQP4 antibody seropositivity (Table 3). Age, the number of involved segments, the presence of skipped lesions, the enhancement pattern, and the axial distribution pattern of >50% involvement in the axial plane were not significantly associated with AQP4 antibody status.

A scoring system was developed on the basis of the above results (Table 4). Equal scores were assigned for parameters associated with AQP4 antibody seropositivity, except for cervicomedullary junction involvement. Additional points were given if the lesion involved the medulla oblongata. The area under the receiver operating curve for the scoring system was 91.7 (95% confidence interval, 82.9–100.0). With a score threshold of ≥3, the sensitivity of the scoring system was 73.3% (11/15) and the specificity was 96.2% (25/26). The sensitivity and specificity of each parameter are as follows: female sex (sensitivity, 87%; specificity, 81%), cervicomedullary junction involvement (sensitivity, 60%; specificity, 77%), cord expansion ratio >1.4 (sensitivity, 40%; specificity, 82%), and bright spotty lesions (sensitivity, 93%; specificity, 69%). The interclass correlation value for measuring the cord expansion ratio was 0.78 (95% confidence interval, 0.61–0.88). The κ value for interobserver agreement in judging bright spotty lesions was 0.61 (95% confidence interval, 0.37–0.85).

DISCUSSION

In our study, we identified characteristic spinal MR imaging features in Asian patients with AQP4-positive LETM (ie, probable NMOSD) compared with those with AQP4-negative LETM. Cervicomedullary junction involvement, cord expansion in the

acute/early stage, the presence of bright spotty lesions, and female sex were significantly associated with AQP4 seropositivity in patients with LETM.

An important factor distinguishing our study from previous work is the use of serum AQP4 antibody status, rather than disease diagnostic criteria, as a reference standard. Although criteria-based diagnosis is clinically necessary, it was not appropriate to use this approach as a reference standard in our study because the aim of our study was to predict the AQP4 antibody status for the patients with LETM with unknown AQP4 antibody status. The concept of NMO as a disease has recently been expanded to a spectrum of disorders (NMOSD) based on the International Panel for NMO Di-

Table 4: Scoring system

Parameters	Points
Sex	
Male	0
Female	1
Cervicomedullary involvement	
Absent	0
Present	1
Medulla oblongata involvement	+1 = 2
Bright spotty lesion	
Absent or suspicious	0
Definite	1
Cord expansion ratio for acute or early-stage MRI	
≤1.4	0
>1.4	1

agnosis criteria, and this definition may continue to evolve in the future. Additionally, LETM is not specific for NMOSD and may be representative of other disease states that cannot be further classified using the current diagnostic criteria.

Female predilection, extension of cervical lesions to brain stem lesions,¹⁵⁻¹⁷ spinal MR imaging findings of cord swelling,^{14,18} and bright spotty lesions¹³ have previously been reported in patients with NMO; however, the aforementioned characteristics were mostly descriptive data without statistical inference. Although Yonezu et al¹³ reported bright spotty lesions as statistically discriminative findings with a sensitivity and specificity of 54% and 97%, the comparison was done within patient groups with NMO and MS.¹³ Recently, Pekcevik et al¹⁰ reported that only bright spotty lesions on T2WI are highly specific findings that can be used to differentiate NMO from other etiologies that could manifest as LETM. In contrast to a previous study by Pekcevik et al,¹⁰ we found that cervicomedullary junction involvement and a high cord expansion ratio in the acute/early stage of disease were statistically associated with AQP4 antibody seropositivity. This discrepancy might be attributed to several factors. First, the study of Pekcevik et al excluded idiopathic acute transverse myelitis or possible AQP4-negative NMOSD, which would be most cases of the AQP4-negative group in our study. Second, cord swelling is a subjective judgment of the radiologist, and few studies have addressed the degree of cord swelling. In contrast, we quantitatively measured cord swelling and showed good interobserver agreement when measurements were performed by 2 independent radiologists. Third, we have defined cervicomedullary junction involvement, a broader concept than brain stem extension, and suggested a clear margin for judging the presence of cervicomedullary junction involvement. Last, our study excluded potential cases of spinal dural arteriovenous fistula and spinal infarction, which could be diagnosed on the basis of MR imaging findings and the clinical setting.

Our study provides confirmation that bright spotty lesions on axial T2WI are highly specific for AQP4 antibody-positive LETM, in keeping with a previous study.¹⁰ The interobserver agreement for the judgment of bright spotty lesions was substantial ($\kappa = 0.61$)¹⁹ and was higher than the minimal κ value of 0.55 suggested for classification systems.²⁰ Therefore, our scoring system (sensitivity, 73.3%; specificity, 96.2%) provides an accurate and reliable tool for diagnosing AQP4 antibody-positive LETM and possible NMOSD. The presence or history of optic neuritis was more fre-

quent in the AQP4 antibody-positive group. It did not reach statistical significance (P value = .051) and was not incorporated in our scoring system, though it showed potential as a discriminative feature of the AQP4 antibody-positive patient group. However, the interpretation should be made with caution because the reported sensitivity and specificity of the AQP4 antibody for NMO are 58%–76% and 85%–99%; thus, a positive AQP4 antibody result does not necessarily indicate NMO.^{1,21-23}

The present study had several limitations mainly related to its retrospective design and small sample size. First, we were unable to prepare a validation set for the scoring system. Additionally, we were unable to perform a multivariable logistic regression analysis due to our sample size. Therefore, in building the scoring system, we could only assign equal scores for each parameter. Second, our study population was exclusively of Asian descent. Future studies are necessary to determine the generalizability of our findings to other populations. Third, the influence of different protocols, such as section thickness, on the presence of bright spotty lesions on axial T2WI is unknown. The use of thin-section MR imaging (which is less influenced by partial averaging effects in the cranio-caudal direction) might increase the sensitivity for judging the presence of bright spotty lesions. Fourth, our study only included adult patients; therefore, our study results should not be extended for usage in the pediatric population, for which a differential diagnosis of acute disseminated encephalomyelitis with NMOSD might be important.

CONCLUSIONS

Cervicomedullary junction involvement, a higher cord expansion ratio, bright spotty lesions, and female sex are highly indicative of AQP4 antibody seropositivity in patients with LETM and may predict a diagnosis of NMOSD.

REFERENCES

1. Wingerchuk DM, Lennon VA, Pittock SJ, et al. **Revised diagnostic criteria for neuromyelitis optica.** *Neurology* 2006;66:1485–89 [CrossRef](#) [Medline](#)
2. Wingerchuk DM, Lennon VA, Lucchinetti CF, et al. **The spectrum of neuromyelitis optica.** *Lancet Neurol* 2007;6:805–15 [CrossRef](#) [Medline](#)
3. Jarius S, Wildemann B. **Aquaporin-4 antibodies (NMO-IgG) as a serological marker of neuromyelitis optica: a critical review of the literature.** *Brain Pathol* 2013;23:661–83 [CrossRef](#) [Medline](#)
4. Wingerchuk DM, Banwell B, Bennett JL, et al; International Panel for NMO Diagnosis. **International consensus diagnostic criteria for neuromyelitis optica spectrum disorders.** *Neurology* 2015;85:177–89 [CrossRef](#) [Medline](#)
5. Cree BA, Lamb S, Morgan K, et al. **An open label study of the effects of rituximab in neuromyelitis optica.** *Neurology* 2005;64:1270–72 [CrossRef](#) [Medline](#)
6. Aguilera AJ, Carlow TJ, Smith KJ, et al. **Lymphocytoplasmaferesis in Devic's syndrome.** *Transfusion* 1985;25:54–56 [CrossRef](#) [Medline](#)
7. Weinshenker BG, O'Brien PC, Petterson TM, et al. **A randomized trial of plasma exchange in acute central nervous system inflammatory demyelinating disease.** *Ann Neurol* 1999;46:878–86 [Medline](#)
8. Keegan M, Pineda AA, McClelland RL, et al. **Plasma exchange for severe attacks of CNS demyelination: predictors of response.** *Neurology* 2002;58:143–46 [CrossRef](#) [Medline](#)
9. Nozaki I, Hamaguchi T, Komai K, et al. **Fulminant Devic disease successfully treated by lymphocytopheresis.** *J Neurol Neurosurg Psychiatry* 2006;77:1094–95 [Medline](#)

10. Pekcevik Y, Mitchell CH, Mealy MA, et al. **Differentiating neuromyelitis optica from other causes of longitudinally extensive transverse myelitis on spinal magnetic resonance imaging.** *Mult Scler* 2016;22:302–11 [CrossRef Medline](#)
11. Waters P, Jarius S, Littleton E, et al. **Aquaporin-4 antibodies in neuromyelitis optica and longitudinally extensive transverse myelitis.** *Arch Neurol* 2008;65:913–19 [Medline](#)
12. Cassinotto C, Deramond H, Olindo S, et al. **MRI of the spinal cord in neuromyelitis optica and recurrent longitudinal extensive myelitis.** *J Neuroradiol* 2009;36:199–205 [CrossRef Medline](#)
13. Yonezu T, Ito S, Mori M, et al. **“Bright spotty lesions” on spinal magnetic resonance imaging differentiate neuromyelitis optica from multiple sclerosis.** *Mult Scler* 2014;20:331–37 [CrossRef Medline](#)
14. Kitley JL, Leite MI, George JS, et al. **The differential diagnosis of longitudinally extensive transverse myelitis.** *Mult Scler* 2012;18:271–85 [CrossRef Medline](#)
15. Wingerchuk DM, Hogancamp WF, O’Brien PC, et al. **The clinical course of neuromyelitis optica (Devic’s syndrome).** *Neurology* 1999;53:1107–14 [CrossRef Medline](#)
16. Asgari N, Skejoe HP, Lillevang ST, et al. **Modifications of longitudinally extensive transverse myelitis and brainstem lesions in the course of neuromyelitis optica (NMO): a population-based, descriptive study.** *BMC Neurol* 2013;13:33 [CrossRef Medline](#)
17. Kim W, Park MS, Lee SH, et al. **Characteristic brain magnetic resonance imaging abnormalities in central nervous system aquaporin-4 autoimmunity.** *Mult Scler* 2010;16:1229–36 [CrossRef Medline](#)
18. Qiu W, Wu JS, Zhang MN, et al. **Longitudinally extensive myelopathy in Caucasians: a West Australian study of 26 cases from the Perth Demyelinating Diseases Database.** *J Neurol Neurosurg Psychiatry* 2010;81:209–12 [CrossRef Medline](#)
19. Landis JR, Koch GG. **The measurement of observer agreement for categorical data.** *Biometrics* 1977;33:159–74 [CrossRef Medline](#)
20. Sanders RW. **The problem with apples and oranges.** *J Orthop Trauma* 1997;11:465–66 [CrossRef](#)
21. Lennon VA, Wingerchuk DM, Kryzer TJ, et al. **A serum autoantibody marker of neuromyelitis optica: distinction from multiple sclerosis.** *Lancet* 2004;364:2106–12 [CrossRef Medline](#)
22. Jarius S, Franciotta D, Bergamaschi R, et al. **NMO-IgG in the diagnosis of neuromyelitis optica.** *Neurology* 2007;68:1076–77 [CrossRef Medline](#)
23. Nakashima I, Fujihara K, Miyazawa I, et al. **Clinical and MRI features of Japanese patients with multiple sclerosis positive for NMO-IgG.** *J Neurol Neurosurg Psychiatry* 2006;77:1073–75 [CrossRef Medline](#)