



**Providing Choice & Value**  
Generic CT and MRI Contrast Agents

**FRESENIUS  
KABI**

**CONTACT REP**

**AJNR**

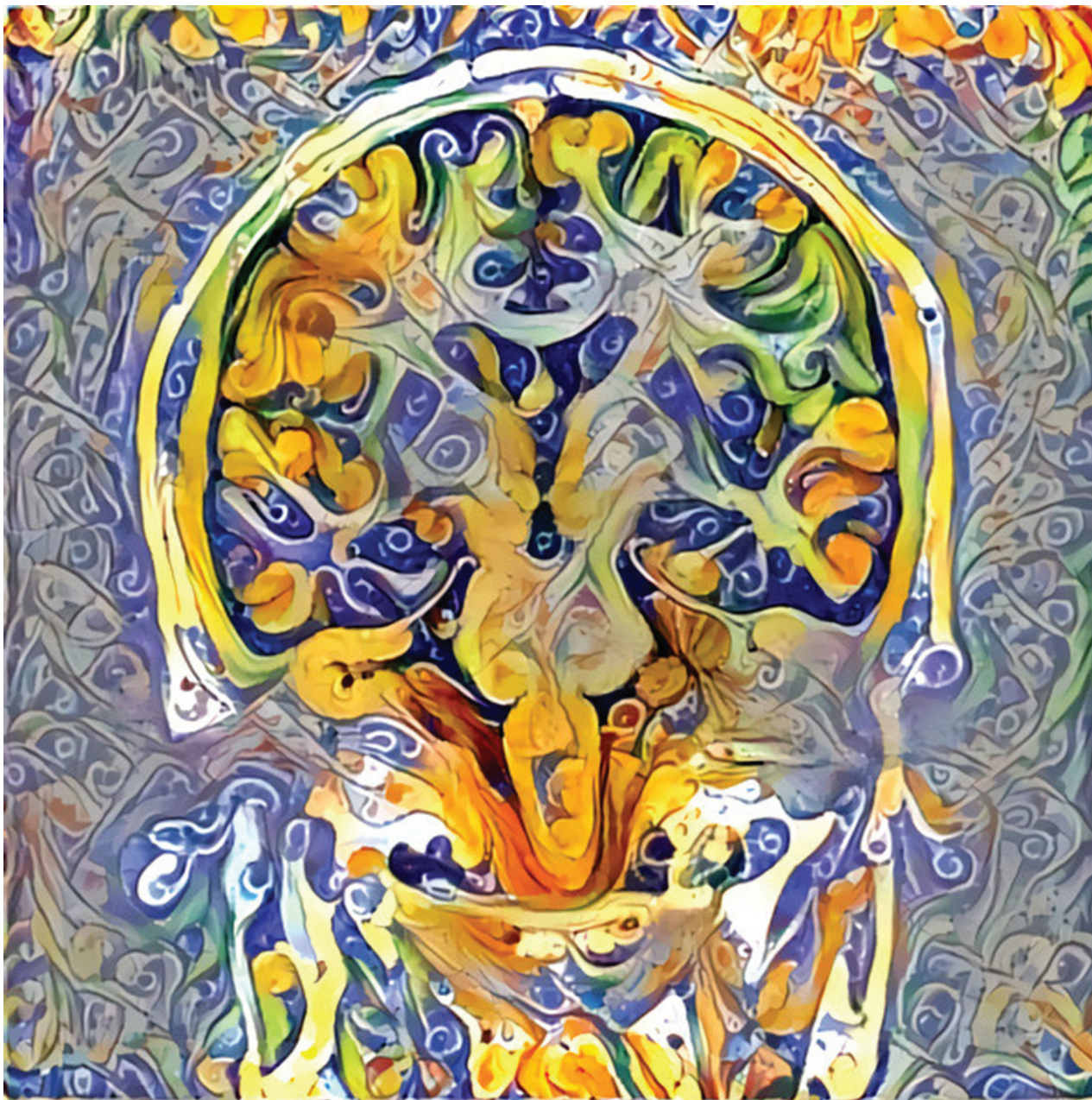
Gianvincenzo Sparacia

*AJNR Am J Neuroradiol* 2020, 41 (9) 1541

doi: <https://doi.org/10.3174/ajnr.P0104>

<http://www.ajnr.org/content/41/9/1541>

This information is current as  
of July 6, 2025.



Title: Machine learning (artificial intelligence) artistic postprocessed brain coronal MRI remapped with a typical Sicilian maiolica ceramics texture. The machine learning postprocessing technique was applied to remap the brain structures extracted from a brain MRI and blend them with a ceramic tile design by using a neural texture transfer technique.  
*Gianvincenzo Sparacia, MD, Neuroradiologist, IRCCS-ISMETT–University of Pittsburgh Medical Center, Palermo, Italy*