



**Providing Choice & Value**  
Generic CT and MRI Contrast Agents

**FRESENIUS  
KABI**

**CONTACT REP**

**AJNR**

**Empty sella syndrome with intrasellar herniation  
of the optic chiasm.**

E M Bursztyn, M H Lavyne and M Aisen

*AJNR Am J Neuroradiol* 1983, 4 (2) 167-168

<http://www.ajnr.org/content/4/2/167.citation>

This information is current as  
of July 20, 2025.

## Empty Sella Syndrome with Intrasellar Herniation of the Optic Chiasm

Enrique M. Bursztyn,<sup>1</sup> Michael H. Lavyne,<sup>2</sup> Mindy Aisen<sup>3</sup>

Many examples of the so-called "empty sella" syndrome have been reported in recent years, especially after the advent of computed tomography (CT) with the use of metrizamide [1-4]. This is a distinct radiologic entity that may or may not be symptomatic [5]. An unusual case is reported in which the optic chiasm was herniated into the sella.

### Case Report

A 48-year-old woman was admitted to New York Hospital-Cornell Medical Center with visual loss and a medical history of primary amenorrhea. She had experienced severe bifrontal headaches in her 20s, which subsided by age 30 years. She noticed the onset of gradually progressive visual loss 1 year later. Neurologic evaluation

3 years later revealed a visual acuity of less than 20/800 in the right eye and 20/70 in the left, with bitemporal field defects. A sellar mass was diagnosed by arteriography and the sella was treated with 4,500 rad (45 Gy). There was partial improvement in her visual acuity. She was without further complaint until 14 years later when recurrence of diminished peripheral vision was noted. Examination revealed the visual acuity to be 20/200 in the right eye, 20/800 in the left. Goldman perimetry defined bitemporal visual field defects associated with a confluent superior nasal defect in the left eye only. Both optic disks were pale. A CT scan suggested an enlarged sella with a hypodense sellar mass. A metrizamide CT scan showed an empty sella, and a reformatted image showed the chiasm to be herniated down into the sella and vertically elongated (figs. 1A and 1B). The anterior cerebral arteries were clearly seen (fig. 1C). A right frontal craniotomy confirmed the prolapse of the

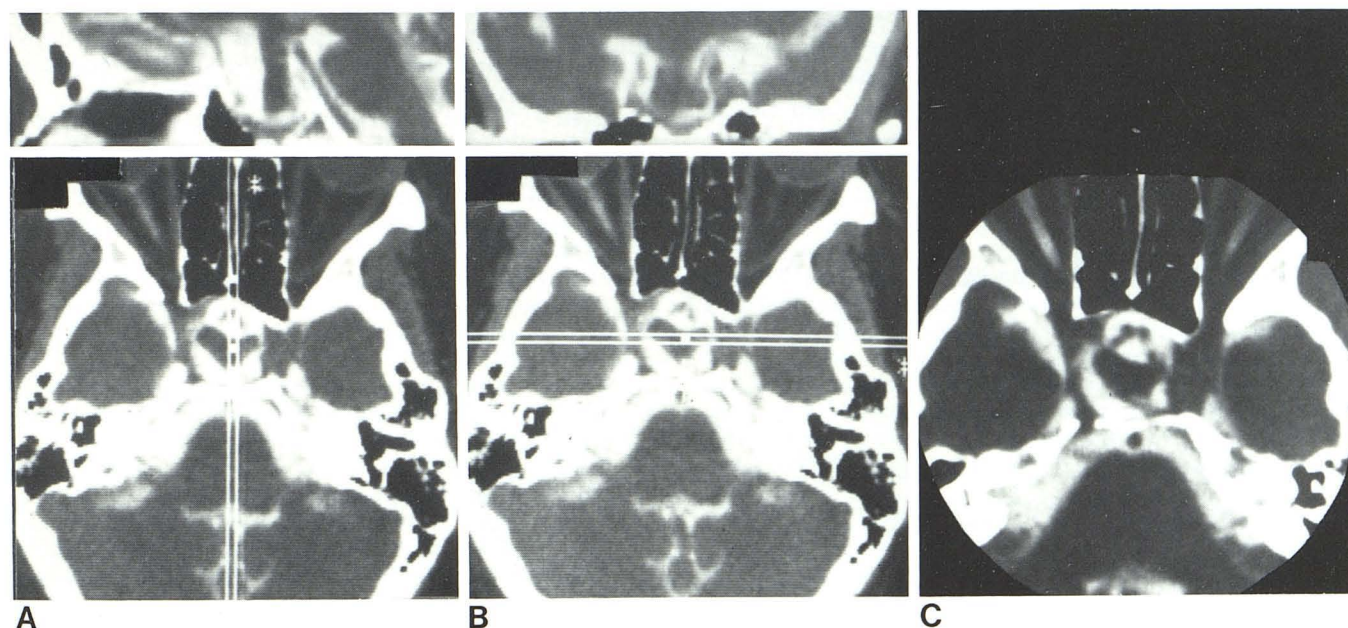


Fig. 1.—A, Sagittal reconstruction through sella. Elongated chiasm herniated into sella. B, Coronal reconstruction with similar findings. C, Anterior cerebral arteries just in front of the chiasm (arrows).

Received March 9, 1982; accepted after revision October 20, 1982.

<sup>1</sup> Department of Radiology, New York Hospital-Cornell Medical Center, New York, NY 10021. Address reprint requests to E. M. Bursztyn.

<sup>2</sup> Department of Surgery, New York Hospital-Cornell Medical Center, New York, NY 10021.

<sup>3</sup> Department of Neurology, New York Hospital-Cornell Medical Center, New York, NY 10021.



chiasm and showed that the precommunicating portion of the anterior cerebral arteries also extended into the sella. The vasculature exhibited marked atherosclerotic changes and the arteries were closely adherent to the optic nerves due to fibrosis. Microsurgical decompression of the right optic nerve and chiasm was performed but it was impossible to relocate the elongated atherosclerotic anterior cerebral arteries out of the sella. The visual fields expanded immediately after this operation, but 2 days later her vision failed again.

## Discussion

The empty sella syndrome was initially described in cases of scarred pituitary gland after postpartum pituitary necrosis [6]. The syndrome is the result of a diaphragma sellae deficiency. In the primary form, it is unusually asymptomatic and the diagnosis is made radiologically [7]. In the secondary form it may be due to spontaneous or postirradiation ischemic necrosis of a large pituitary tumor, or infrequently is seen in the presence of diabetes mellitus, granulomatous meningitis (e.g., sarcoid), or septic shock. The atrophic, shrunken pituitary gland leaves an empty space which is taken up by the expanded suprasellar cistern. The CT scan suggests the diagnosis by showing the presence of cerebrospinal fluid density in the sella turcica [8–11]; however, a necrotic intrasellar pituitary tumor may give a similar CT picture [11, 12]. The diagnosis is confirmed by the demonstration of contrast material, either air or, as in our case, metrizamide, within the sella turcica [13–17]. Our case is unusual in that we were able to demonstrate the optic chiasm and both precommunal anterior cerebral arteries within the sella turcica. The CT findings, confirmed at operation, are best explained on the basis of postirradiation tumor necrosis and adhesive arachnoiditis [18, 19] drawing the anterior cerebral arteries, optic chiasm, and nerves down into the sella along with the shrunken tumor capsule [20–23].

## REFERENCES

1. Bajraktari X, Bergstrom M, Brismar K, Goulatia R, Greitz T, Grepe A. Diagnosis of intrasellar cisternal herniation (empty sella) by computer assisted tomography. *J Comput Assist Tomogr* 1977;1:105–116
2. Jordan RM, Kendall JW, Kerber CW. The primary empty sella syndrome: analysis of the clinical characteristics, radiographic features, pituitary function and cerebrospinal fluid adenohypophysial hormone concentrations. *Am J Med* 1979;62:569–580
3. Topliss D, Gilford E, Luke H. Diagnosing the empty sella by CAT: a note of caution letter. *Am J Med* 1977;63:660
4. Rosario R, Hammerschlag SB, Post KD, Wolpert SM, Jackson I. Diagnosis of empty sella with CT scan. *Neuroradiology* 1977;13:85–88
5. Xistris E, Sweeney PJ, Gutman FA. Visual disturbances associated with primary empty sella syndrome. *Clev Clin Q* 1977;44:137–140
6. Lee KF, Schatz NJ. Ischemic chiasmal syndrome. *Acta Radiol [Suppl] Stockh* 1976;347:131–148
7. Buckman MT, Husain M, Carlow J, Peake GT. Primary empty sella syndrome. *Am J Med* 1976;61:124–128
8. Leeds NE, Naidich IP. Computerized tomography in the diagnosis of sellar and parasellar lesions. *Semin-Roentgenol* 1977;12:121–135
9. Haughton VM, Rosenbaum AE, Williams AL, Drayer B. Recognizing the empty sella by CT: the infundibulum sign. *AJR* 1981;136:293–295
10. Smaltino F, Bernini FP, Muras I. Computed tomography for diagnosis of empty sella associated with enhancing pituitary microadenoma. *J Comput Assist Tomogr* 1980;4:592–599
11. Daniels DL, Williams AL, Thornton RS, Meyer GA, Cusick JF, Haughton VM. Differential diagnosis of intrasellar tumors by computed tomography. *Radiology* 1981;141:697–701
12. Syvertsen A, Haughton VM, Williams AL, Cusick JF. The computed tomographic appearance of the normal pituitary gland and pituitary microadenomas. *Radiology* 1971;133:385–391
13. Hall K, McAllister VL. Metrizamide cisternography in pituitary and juxta-pituitary lesions. *Radiology* 1980;134:101–108
14. Ghoshhajra K. High resolution metrizamide CT cisternography in sellar and suprasellar abnormalities. *J Neurosurg* 1981;54:232–239
15. Young WF, Ospina LF, Wesolowski D, Touma A. The primary empty sella syndrome, diagnosis with metrizamide cisternography. *JAMA* 1981;246:2611–2612
16. Zull LDM, Falko JM. Metrizamide cisternography in the investigation of the empty sella syndrome. *Arch Intern Med* 1981;141:487–489
17. Hoffman JC, Tindall GT. Diagnosis of empty sella syndrome using Amipaque cisternography combined with computerized tomography. *J Neurosurg* 1980;52:99–102
18. Loew F, Kremer G. Surgical intervention in the sellar and parasellar region (tumors, optico-chiasmatic arachnitis). *Ber Zusammenkunft Ophthalmol Ges* 1974;72:61–69
19. Dahlstrom R, Acers TE. Chiasmatic arachnoiditis and empty sella: report and discussion of a case. *Ann Ophthalmol* 1975;7:73–76
20. Welch K, Stears JC. Chiasmectomy for the correction of traction on the optic nerves and chiasm associated with their descent into an empty sella turcica. Case Report. *J Neurosurg* 1979;36:760–764
21. Niizuma A, Hori S, Sonobe M, Komatsu S, Watanabe H. Visual improvement after surgery for the primary empty sella syndrome. *Neurol Med Chir* 1979;19:477–482
22. Raspiller A, Bowyer M, Lahlou G. Empty sella turcica and associated ophthalmologic manifestations: 3 cases. *Rev Oto-neuroophthalmol* 1979;51:75–79
23. Laws ER, Trautman JC, Hollenhorst RW. Transphenoidal decompression of the optic nerve and chiasm. Visual results in 62 patients. *J Neurosurg* 1977;46:717–722