



Providing Choice & Value

Generic CT and MRI Contrast Agents



CONTACT REP

AJNR

This information is current as
of July 29, 2025.

Automated Integration of Multimodal MRI for the Probabilistic Detection of the Central Vein Sign in White Matter Lesions

J.D. Dworkin, P. Sati, A. Solomon, D.L. Pham, R. Watts,
M.L. Martin, D. Ontaneda, M.K. Schindler, D.S. Reich and
R.T. Shinohara

AJNR Am J Neuroradiol 2018, 39 (10) 1806-1813

doi: <https://doi.org/10.3174/ajnr.A5765>

<http://www.ajnr.org/content/39/10/1806>

Automated Integration of Multimodal MRI for the Probabilistic Detection of the Central Vein Sign in White Matter Lesions

J.D. Dworkin, P. Sati, A. Solomon, D.L. Pham, R. Watts, M.L. Martin, D. Ontaneda, M.K. Schindler, D.S. Reich, and R.T. Shinohara



ABSTRACT

BACKGROUND AND PURPOSE: The central vein sign is a promising MR imaging diagnostic biomarker for multiple sclerosis. Recent studies have demonstrated that patients with MS have higher proportions of white matter lesions with the central vein sign compared with those with diseases that mimic MS on MR imaging. However, the clinical application of the central vein sign as a biomarker is limited by interrater differences in the adjudication of the central vein sign as well as the time burden required for the determination of the central vein sign for each lesion in a patient's full MR imaging scan. In this study, we present an automated technique for the detection of the central vein sign in white matter lesions.

MATERIALS AND METHODS: Using multimodal MR imaging, the proposed method derives a central vein sign probability, π_{ij} , for each lesion, as well as a patient-level central vein sign biomarker, ψ_i . The method is probabilistic in nature, allows site-specific lesion segmentation methods, and is potentially robust to intersite variability. The proposed algorithm was tested on imaging acquired at the University of Vermont in 16 participants who have MS and 15 participants who do not.

RESULTS: By means of the proposed automated technique, participants with MS were found to have significantly higher values of ψ than those without MS ($\bar{\psi}_{MS} = 0.55 \pm 0.18$; $\bar{\psi}_{non-MS} = 0.31 \pm 0.12$; $P < .001$). The algorithm was also found to show strong discriminative ability between patients with and without MS, with an area under the curve of 0.88.

CONCLUSIONS: The current study presents the first fully automated method for detecting the central vein sign in white matter lesions and demonstrates promising performance in a sample of patients with and without MS.

ABBREVIATIONS: CVS = central vein sign; MIMoSA = Method for InterModal Segmentation Analysis

Multiple sclerosis is an inflammatory demyelinating disease of the central nervous system characterized by lesions in the

brain and spinal cord. Currently, assessment of MR imaging factors heavily in the diagnosis of MS, with much importance placed on the distribution (dissemination in space) and time course of lesions (dissemination in time)¹ in patients presenting with clinical symptoms typical for MS. However, current imaging-based diagnostic criteria favor sensitivity over specificity, making misdiagnosis of MS relatively common.^{2,3} Misdiagnosis is especially prevalent among disorders that demonstrate white matter lesions similar to those found in MS.^{4,5}

As a means of distinguishing MS lesions from white matter abnormalities arising from other diseases, the identification of a vein traversing the center of a lesion has been proposed as a diagnostic tool because inflammatory demyelination in the MS white matter is perivenular.^{6,7} The potential for this marker to be used

Received April 5, 2018; accepted after revision June 25.

From the Department of Biostatistics, Epidemiology, and Informatics (J.D.D., M.L.M., R.T.S.), Perelman School of Medicine, University of Pennsylvania, Philadelphia, Pennsylvania; Translational Neuroradiology Section (P.S., M.K.S., D.S.R.), National Institute of Neurological Disorders and Stroke, National Institutes of Health, Bethesda, Maryland; Departments of Neurological Sciences (A.S.) and Radiology (R.W.), Larner College of Medicine at the University of Vermont, Burlington, Vermont; Center for Neuroscience and Regenerative Medicine (D.L.P.), Henry M. Jackson Foundation, Bethesda, Maryland; Mellen Center for Multiple Sclerosis Treatment and Research (D.O.), Cleveland Clinic, Cleveland, Ohio; and Department of Neurology (D.S.R.), Johns Hopkins University School of Medicine, Baltimore, Maryland.

This work was supported, in part, by the National Institutes of Health: grants RO1 NS085211, RO1 NS060910, and RO1 NS093349 from the National Institute of Neurological Disorders and Stroke, RO1 MH 112847 from the National Institute of Mental Health, and RO1 EB 017255 from the National Institute of Biomedical Imaging and Bioengineering. The research was also supported by the Intramural Research Program of National Institute of Neurological Disorders and Stroke (Z01 NS003119) and grants RG-1507-05243 and RG-1707-28586 from the National Multiple Sclerosis Society.

The content is solely the responsibility of the authors and does not necessarily represent the official views of the funding agencies.

Please address correspondence to Jordan D. Dworkin, Department of Biostatistics, Epidemiology, and Informatics, Perelman School of Medicine, University of Pennsylvania, 218 Blockley Hall, 423 Guardian Drive Philadelphia, PA, 19104; e-mail: jdwor@pennmedicine.upenn.edu; @jddwor

Indicates open access to non-subscribers at www.ajnr.org

<http://dx.doi.org/10.3174/ajnr.A5765>

in the diagnosis of MS has been advanced by recent developments in MR imaging pulse sequences, which have enabled detailed imaging of veins in the brain.⁸⁻¹⁰ Using these sequences, researchers have provided strong evidence that higher proportions of MS lesions show the central vein sign (CVS) compared with lesions resulting from other disease processes commonly mistaken for MS.^{7,11-16} This finding has been demonstrated for neuromyelitis optica spectrum disorder, systemic autoimmune diseases, cerebral small vessel disease, Susac syndrome, and migraine. While further replication in a prospective setting is still necessary, a high proportion of brain MR imaging lesions demonstrating the CVS appear to have potential as a biomarker with high specificity for MS.

Unfortunately, important barriers limit the feasibility of the clinical application of the CVS. Two such limitations are the presence of intra- and interrater variability in the subjective assessment of the CVS and the time required to adjudicate the CVS in every MR imaging lesion per patient. Recent studies have attempted to mitigate the time burden associated with CVS assessment by limiting the number of lesions examined.^{13,17} However, these techniques have the potential to increase variability and have generally not been as successful as the evaluation of the proportion of the CVS in all MR imaging lesions per patient.^{7,18} Most important, in studies that adjudicate all lesions per patient, optimal proportion cutoffs have differed across study sites and disease comparisons.^{7,13,18} This variability highlights the need for thorough comparison and optimization of these cutoffs across samples and diseases, yet the same issues of rater subjectivity and temporal burden make this type of research difficult. Thus, the current study introduces an algorithm for the automatic determination of the CVS in white matter lesions and presents a fully automated patient-level diagnostic biomarker. In this article, we describe the CVS-detection pipeline, present statistical measures of judgment accuracy, and discuss the implications and next steps for this line of research.

MATERIALS AND METHODS

CVS Detection Algorithm

To adjudicate the CVS for each lesion in a given participant, we perform several steps. We first present the overall summary and then address each step, with associated rationale, in detail below. To perform the algorithm, we require a T1-weighted volume, T2-weighted FLAIR volume, and T2*-weighted segmented echo-planar imaging volume: 1) A map of the veins present in the T2*-EPI volume is created using a process referred to as “vesselness filtering,” and the vein map is rigidly registered to the T1 volume. 2) White matter lesions are segmented using the T1- and T2-FLAIR volumes. 3) Clear lesion boundaries are then determined using a process that removes ambiguous boundary voxels. 4) Periventricular lesions are removed from candidacy, per guidelines given by the North American Imaging in Multiple Sclerosis Cooperative.¹⁹ 5) A permutation procedure is performed to determine whether identified veins occur in the center of a given lesion to a greater degree than would be expected by chance. This yields a probability of a CVS for each lesion j in patient i 's scan, denoted π_{ij} . Lesion-level CVS probabilities are then averaged to obtain a patient-level CVS biomarker, denoted ψ_i . 6) Contributions of the

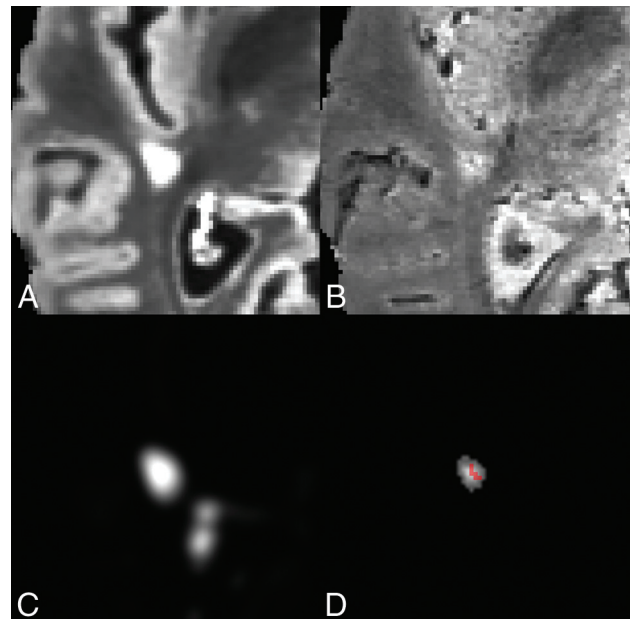


FIG 1. A, Axial slice of a lesion on T2-FLAIR volume. B, Axial slice of a lesion on T2*-EPI volume. C, MIMoSA lesion-probability map. D, Distance-to-lesion-boundary mask with the vesselness filter overlay. The lesion-level CVS probability following permutation was 0.975.

lesions to the average can be weighted by the noise in their T2*-EPI intensities to account for scan motion. Figure 1 demonstrates the steps of the algorithm on a sample lesion. Most important, while figures are necessarily presented in 2D space, all methods undertaken for this procedure are conducted in 3D volumetric space and simultaneously consider all 3 planes of the image.

Vesselness Filtering

Vein maps in the brain are created to later determine the presence or absence of veins in each lesion. To do this, we applied the Frangi vesselness filter²⁰ to the unregistered T2*-EPI volume (for the application to data, this study used the Convert3D Tool; <https://sourceforge.net/projects/c3d/>), producing a map of scores of ≥ 0 , with scores of 0 implying no vesselness qualities. The Frangi filter is a vessel-enhancement algorithm based on the Hessian matrix at each voxel, in which the second-order structure of the image is obtained through convolution with derivatives of Gaussian kernels. The scores are calculated using the eigenvalues of the Hessian matrix, specifically picking up on tubular structures that are darker (or lighter, depending on the implementation) than their surroundings. After being obtained in the unregistered T2*-EPI space, these vesselness maps are then rigidly registered to the T1 space.

Lesion Segmentation

To determine the location and shape of white matter lesions, we performed automatic lesion segmentation on coregistered T1- and T2-FLAIR volumes. For the application to data, this study used the Method for InterModal Segmentation Analysis (MIMoSA) model²¹ in the R statistical environment.²² The lesion segmentation algorithm produces a map containing the probability that each voxel is part of a lesion. For the results presented in this article, a threshold of 0.30 was applied to this probability map

to create a binary lesion mask. The threshold of 0.30 was chosen because previous work has found it to be a conservative cutoff that can limit the amount of false-positive lesion tissue.^{23,24} Following the definition of a lesion positive for CVS (CVS+) given by the North American Imaging in Multiple Sclerosis Cooperative,¹⁹ we removed from candidacy lesions detected by the MIMoSA model of <3 mm in any plane.

Lesion-Boundary Determination

Thresholding of the lesion-probability map often results in pathologically distinct lesions being connected by ambiguous boundary voxels. For these lesions to be properly assessed for the CVS, the proposed algorithm addresses this pseudoconfluence through a recently described technique that removes voxels that are connecting pathologically distinct lesions.²⁴ The technique works by finding regions in which the texture of the lesion-probability map resembles the center of a lesion. Therefore, the centers that it produces are maintained and used for investigating the CVS for the remainder of this algorithm. Further detail on the implementation of this method can be found in the original publication.²⁴

Because the North American Imaging in Multiple Sclerosis guidelines call for the exclusion of confluent lesions, the removal of connecting voxels may represent a deviation from these guidelines in cases of true confluence. However, many lesions that would be judged discrete by expert raters are often merged by automated segmentation methods.²⁵ This merging can result in drastic and unrealistic degrees of pseudoconfluence in automated lesion masks, sometimes resulting in ≥ 50 distinct lesions being merged into <10 lesion components.²⁴ Thus, relying on automated determinations of confluence in automated lesion masks would likely result in the exclusion of many or most eligible lesions.

Periventricular Lesion Exclusion

The density and branching nature of veins near the ventricles makes assessment for the CVS difficult in periventricular lesions, especially in cases in which >1 distinct vein traverses the lesion. Thus, the North American Imaging in Multiple Sclerosis Cooperative recommends excluding lesions with >1 vein or with branching veins.¹⁹ The proposed algorithm addresses this consideration by excluding periventricular lesions because periventricular lesions typically contain multiple veins. This exclusion is done by performing tissue-class segmentation on the T1 volumes (for the application to data, this study used the FMRIB Automated Segmentation Tool; FAST; <http://fsl.fmrib.ox.ac.uk/fsl/fslwiki/fast>)²⁶, expanding the CSF region of the brain by 3 mm and eliminating lesions from the lesion-center mask that overlap the expanded CSF region. The choice of a 3-mm expansion was made on the basis of visual inspection of randomly selected T2*-EPI volumes, for which 3 mm appeared to include most of the branching vein structure discussed in the consensus statement, without removing too much of the deep white matter. Notably, although this technique excludes periventricular lesions, it does not exclude other lesions that may have multiple veins. This issue represents a second deviation from the North American Imaging in Multiple Sclerosis recommendations, which could potentially be addressed

by future advances in methods for segmenting and counting distinct veins.

CVS Permutation Procedure

In lesions that contain central veins, one would expect above-average coherence between the centrality of voxels within the lesion and their vesselness score. The proposed permutation procedure takes advantage of that expectation to examine the degree to which the most veinlike voxels of a lesion are more concentrated in the center of the lesion than one might expect to observe by chance. First, a vein-center coherence score for lesion j in patient i 's scan, C_{ij} , is calculated by summing the products of the distance-to-nearest-lesion-boundary of each voxel (ie, centrality) score, d_{ijv} , and its Frangi vesselness score, f_{ijv} . The coherence formula is given by

$$C_{ij} = \sum_{v \in V} d_{ijv} \times f_{ijv},$$

where V is the set of all voxels in lesion j . Thus, higher values of this score indicate that the highest vesselness values within the lesion tend to occur in the same voxels as the highest centrality values.

A lesion-specific null distribution of coherence scores is created using 1000 random permutations to determine the degree to which this score deviates from chance in cases in which there is no biologic correspondence between vesselness and location within lesions. For each permutation, p , the vesselness scores of the voxels in lesion j are randomly resampled without replacement, yielding a randomly ordered set of values, V_p^* . A null coherence score is then calculated using the formula,

$$C_{ijp}^* = \sum_{v \in V, reV_p^*} d_{ijv} \times f_{ijr}.$$

This permutation procedure is performed 1000 times, resulting in a sample of 1000 null coherence scores. The lesion-level CVS probability, π_{ij} , is then calculated as the proportion of chance (null-distributed) CVS scores that are smaller than the observed score, given by

$$\pi_{ij} = \frac{1}{1000} \sum_{p=1}^{1000} \mathbb{I}[C_{ijp}^* < C_{ij}].$$

To obtain a subject-level CVS biomarker, ψ_i , these probabilities are averaged over all lesions observed in patient i . The formula for ψ_i is given by

$$\psi_i = \frac{1}{N_L} \sum_{j \in L} \pi_{ij},$$

where N_L is the number of candidate lesions in patient i 's scan. The biomarker, ψ_i , can be roughly interpreted as the proportion of the patient's lesions that demonstrate the CVS.

Optional Noise Weighting

When one takes the average of the CVS probabilities for a patient's lesions, some lesions may have more reliable estimates than others. A more stable biomarker can potentially be obtained by weighting each lesion's contribution to the biomarker by the amount of noise in the voxels of the lesion on the T2*-EPI volume. To estimate the level of noise in a lesion, we first constructed a "noiseless" T2*-EPI by performing anisotropic diffusion on the

original scan.²⁷ This procedure results in a smoothed volume that maintains tissue boundaries and other image gradients. Then, for voxels in the lesion, the difference is obtained between the original T2*-EPI and the smoothed T2*-EPI. A noise value is finally calculated by dividing the sum of the squared voxel differences by the total number of voxels in the lesion. For lesion *j*, this value is defined as

$$n_{ij} = \frac{1}{N_v} \sum_{v \in v} (I_v - I_v^s)^2$$

where I_v and I_v^s are the intensity and smoothed intensity of voxel *v*, respectively. The desired reliability weight is simply the inverse of this noise value,

$$w_{ij} = \frac{1}{n_{ij}}.$$

A weighted subject-level biomarker, ψ_i^w , is then calculated by summing the products of the CVS probabilities of the lesions with their weights and dividing by the sum of the weights. The weighted biomarker is given by

$$\psi_i^w = \frac{\sum_{j \in L} \pi_{ij} \times w_{ij}}{\sum_{j \in L} w_{ij}}.$$

Implementation and Software

Accompanying this article, code for the central vein detection algorithm has been made freely available on-line (<https://github.com/jdwor/cvs>). One file, `centralveins_full.R`, contains code to run all preprocessing and analysis steps described in the previous section. This file serves to increase the understanding of all steps used in this study and to provide a straightforward tool that can be applied to raw images. A second file, `centralveins_simple.R`, contains code to be run directly on a probability map and a vein map. This file serves to improve implementations across different sites and scanners, for which researchers and clinicians may have preferred pipelines for preprocessing and lesion segmentation. Following preprocessing and structure segmentation, the `centralveins_simple` function was found to take an average of 17.7 ± 9.1 minutes and was roughly broken down as a 10-minute baseline with an additional 20 seconds per lesion when run without parallelization. Finally, a third file, `helperfunctions.R`, provides additional functions used within the previous 2 files.

Validation

Data. For this study, data were analyzed for 40 research participants recruited from the University of Vermont neurology clinic as part of a study aiming to improve the diagnostic specificity for MS.¹⁷ Participants were between 20 and 67 years of age, and 37 were women. Ten had MS and no comorbidities known to produce MR imaging white matter abnormalities; 10 had MS and comorbidities known to produce MR imaging white matter abnormalities; 10 had migraine with MR imaging white matter abnormalities and no other white matter comorbidities; and 10 were previously incorrectly diagnosed with MS and had MR imaging white matter abnormalities and a variety of diagnoses (Table 1).

Whole-brain 3D-T2-FLAIR, T1, and T2*-EPI²⁸ volumes were acquired on a 3T dStream MR imaging scanner (Philips Health-

Table 1: Demographics of the study sample^a

Demographics	
MS (<i>n</i> = 10)	
Age (yr)	44 (16)
Sex	9/10 Female
Disease duration (yr)	9 (7)
Disease subtype	10/10 RRMS
MS with comorbidities (<i>n</i> = 10)	
Age (yr)	43 (9)
Sex	9/10 Female
Disease duration (yr)	9 (6)
Disease subtype	10/10 RRMS
Migraine (<i>n</i> = 10)	
Age (yr)	47 (13)
Sex	10/10 Female
Misdiagnosed with MS (<i>n</i> = 10)	
Age (yr)	53 (7)
Sex	9/10 Female

Note:—RRMS indicates relapsing-remitting MS.

^a The numbers in parentheses are standard deviations.

care, Best, the Netherlands) with a 32-channel dStream head coil. FLAIR and T1 volumes were obtained with 1-mm isotropic resolution, and T2*-EPI volumes were obtained with 0.55-mm isotropic resolution. N4 bias correction²⁹ was performed on all images, and the T2-FLAIR volume for each participant was interpolated to a voxel size of 1 mm³ and rigidly coregistered to the T1 volume. Extracerebral voxels were removed from the T1 volume using a skull-stripping procedure,³⁰ and the brain mask was applied to the T2-FLAIR volume.

Motion-Exclusion Criteria. Because head motion might occur during the T2*-EPI scan, potentially producing uninterpretable images, each participant's T2*-EPI scan was manually rated for motion in the relevant white matter regions. Scans were scored from 1 to 5: One indicated "perfect, no artifacts, and excellent signal-to-noise," 2 indicated "only 1 minor artifact that does not obscure any vessels in supratentorial white matter," 3 indicated "more than 1 artifact that does not obscure any vessels in supratentorial white matter," 4 indicated "more than 1 artifact that does obscure some vessels in supratentorial white matter," and 5 indicated "severe artifacts or bad signal-to-noise that does obscure most vessels in supratentorial white matter." It was decided a priori that scans that were rated 5 would be removed for the primary analysis because scans with that degree of motion may be unusable in clinical practice as well.

Performance Assessment. Because the CVS shows great promise as a diagnostic biomarker, the performance of this algorithm in distinguishing MS and non-MS is of primary interest. To determine whether the automated biomarkers, ψ_i and ψ_i^w , replicate the findings from previous work that the distribution of manually adjudicated central vein proportion differs between MS and its mimics, we used *t* tests to compare the automated CVS values for patients with and without MS. To determine the diagnostic utility of ψ_i and ψ_i^w , we estimated the area under the curve values of the receiver operating characteristic curves. The presence of a difference in performance between ψ_i and ψ_i^w was tested with the DeLong test for comparing the areas under correlated receiver operating characteristic curves³¹ using the pROC package in the R statistical environment.^{22,32} Sensitivity and specificity were calcu-

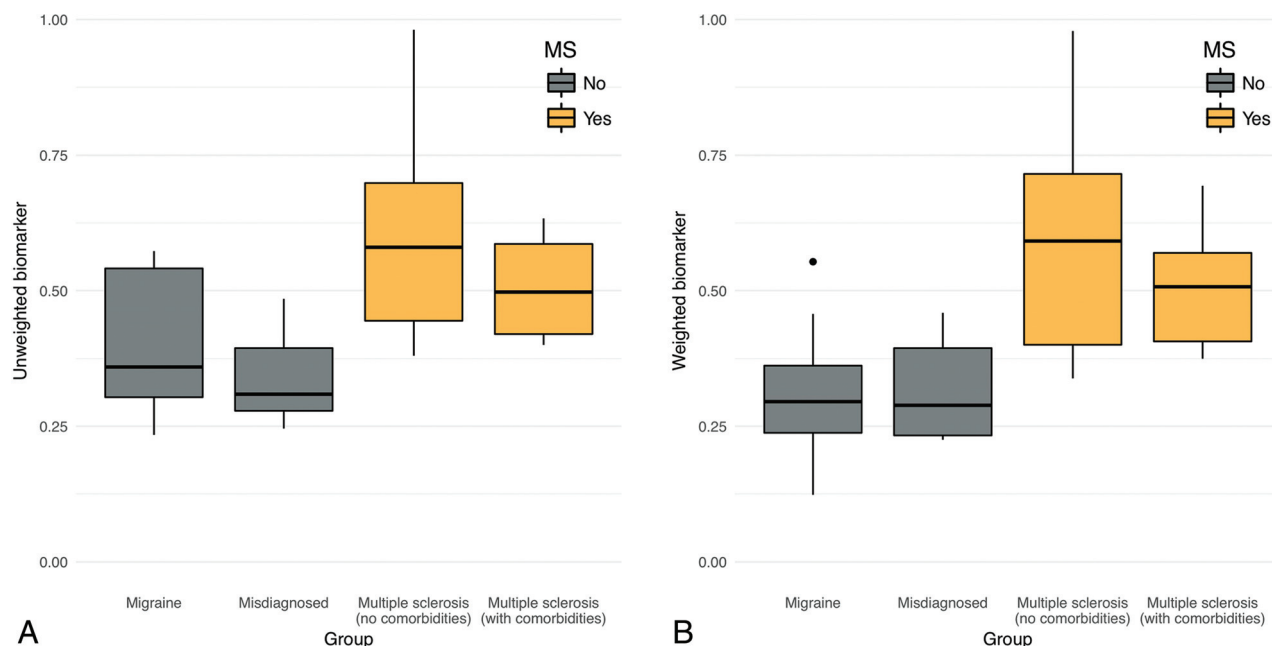


FIG 2. Boxplots of the patient-level central vein sign biomarker score by diagnostic group. The score can be interpreted as the proportion of lesions that are CVS+ according to the method described in this article. Groups shaded gray do not have an MS diagnosis, whereas groups shaded gold do. *A*, Boxplots for the unweighted biomarker. *B*, Boxplots for the noise-weighted biomarker. Points outside the boxplots represent outliers within their respective groups.

lated using the 40% cutoff,⁷ under which inflammatory demyelination is diagnosed if $\geq 40\%$ of white matter lesions exhibit the CVS, as well as the more recently proposed 50% cutoff.¹⁸ Additionally, locally optimal cutoffs were determined, and their sensitivity and specificity values were compared with those obtained using established cutoffs.

Finally, these cutoffs were compared with the performance of proportion cutoffs applied to manual determinations of the CVS in previous research,^{7,13,18} as well as the performance of 3 recently proposed clinical decision rules that do not require the assessment of the full set of lesions in a scan. The first such rule, referred to as the rule of 6,¹³ states that inflammatory demyelination is diagnosed if there are >6 lesions with the CVS or if more than half of lesions show the CVS. The second and third, referred to as select3¹⁵ and select3*,¹⁷ state that inflammatory demyelination is diagnosed if the CVS is found in at least 2 of 3 lesions preselected on T2-FLAIR and FLAIR*⁹ imaging, respectively.

RESULTS

Following manual ratings of scan noise due to motion, 9 participants were excluded and 31 remained for the primary analysis. Of the remaining 31 participants, 16 had MS and 15 did not. Automated CVS detection was performed on these 31 participants using the algorithms and software packages described in the previous section. Two-sample *t* tests were run to determine whether the automated CVS scores differed between the 16 cases with MS and 15 cases without MS. In both the unweighted ($M_{MS} = 0.56 \pm 0.17$; $M_{non-MS} = 0.37 \pm 0.12$; $P < .01$) and weighted ($M_{MS} = 0.55 \pm 0.18$; $M_{non-MS} = 0.31 \pm 0.12$; $P < .001$) variants of the algorithm, the within-patient average CVS probabilities were higher in patients with MS compared with patients without MS. See Fig 2 for breakdowns across all 4 groups.

To determine the diagnostic utility of the automated biomarkers, ψ_i and ψ_i^w , we estimated receiver operating characteristic curves and calculated their areas under the curve. For the unweighted case, ψ_i yielded an area under the curve of 0.84 (Fig 3A). On the basis of the 40% rule, applying a cutoff of 0.40 to ψ_i yielded a sensitivity of 0.94 and a specificity of 0.67. On the basis of the 50% rule, applying a cutoff of 0.50 to this biomarker yielded a sensitivity of 0.56 and a specificity of 0.80. Three locally optimal cutoffs appear to occur at 0.38, at which sensitivity was 1.00 and specificity was 0.67; at 0.44, at which sensitivity was 0.75 and specificity was 0.73; and at 0.50, at which sensitivity was 0.56 and specificity was 0.80 (Table 2).

For the noise-weighted case, ψ_i^w yielded an area under the curve of 0.88 (Fig 3B). Applying a cutoff of 0.40 to ψ_i^w yielded a sensitivity of 0.75 and a specificity of 0.73. Applying a cutoff of 0.50 yielded a sensitivity of 0.56 and a specificity of 0.93. Two locally optimal cutoffs for ψ_i^w appeared to occur at 0.37, at which sensitivity was 0.94 and specificity was 0.73, and at 0.46, at which sensitivity was 0.63 and specificity was 0.93 (Table 2). Although the weighting appeared to produce marginally improved performance, no significant difference was found using the DeLong test ($Z = 0.77$, $P = .22$). Robustness analysis on the full sample of 40 participants after reintroducing the motion-obscured scans showed area under the curve values of 0.77 and 0.81 for ψ_i and ψ_i^w , respectively.

Previous studies that used CVS proportions within patients' full sets of lesions obtained optimal sensitivity/specificity of 1.00/1.00 when comparing cases of MS with undiagnosed cases without MS,⁷ patients with microangiopathic lesions,¹³ and patients with inflammatory vasculopathies.¹⁸ Prior research on a subset of the current sample was unable to obtain perfect discrimination

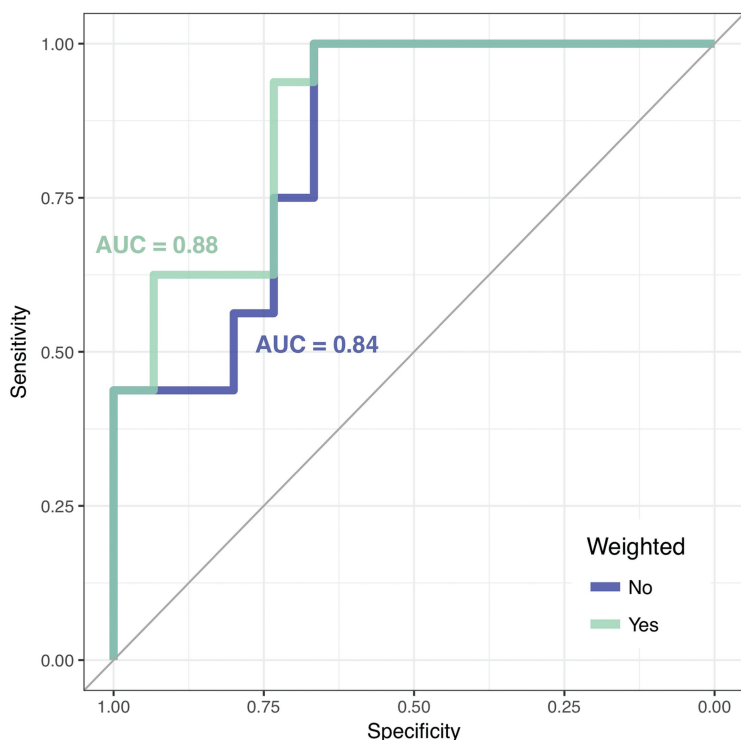


FIG 3. Receiver operating characteristic curves of MS diagnosis based on patient-level automated CVS biomarker scores. The receiver operating characteristic curve for the unweighted biomarker is shaded blue, and the receiver operating characteristic curve for the weighted biomarker is shaded green. The area under the curve (AUC) values for both curves are displayed in their respective colors.

Table 2: Diagnostic performance of weighted and unweighted biomarkers^a

	Threshold	Sensitivity	Specificity
Unweighted biomarker (ψ_i)	0.38	1.00 (0.75–1.00)	0.67 (0.42–0.84)
	0.40	0.94 (0.70–1.00)	0.67 (0.42–0.84)
	0.44	0.75 (0.50–0.90)	0.73 (0.47–0.89)
	0.50	0.56 (0.25–0.65)	0.80 (0.58–0.94)
Weighted biomarker (ψ_i^w)	0.37	0.94 (0.70–1.00)	0.73 (0.42–0.84)
	0.40	0.75 (0.50–0.90)	0.73 (0.42–0.84)
	0.46	0.63 (0.40–0.80)	0.93 (0.68–1.00)
	0.50	0.56 (0.35–0.75)	0.93 (0.74–1.00)

^a Data in column 2 represent the given cutoff values; data in parentheses are the relevant 95% confidence intervals.

between patients with MS and those with migraine when adjudicating the CVS for all lesions.¹⁵ Compared with cutoffs that used the full set of lesions, decision rules based on a subset of lesions were generally less discriminative between participants with and without MS. The rule of 6 did obtain a sensitivity/specificity of 1.00/1.00 for distinguishing patients with MS and those with small-vessel ischemia,¹³ yet in the current sample of MS, migraine, and misdiagnosed patients, the select3 procedure obtained a sensitivity/specificity of 0.81/0.95 and the select3* procedure obtained a sensitivity/specificity of 0.81/0.83.¹⁷

DISCUSSION

Preliminary studies have proposed and validated CVS as a promising biomarker for differentiation of MS from other diseases that cause MR imaging white matter abnormalities.^{7,15,19} Yet concerns remain regarding the heavy temporal burden on manual adjudication of CVS as well as the subjective differences that may arise in response to variation in the adjudicators' time constraints and

intuition. This study sought to address these issues by introducing an algorithm for automated CVS detection that could, in principle, following further validation, be applied in clinical practice.

In the primary analysis, the algorithm was tested on a cohort of 16 patients with MS (8 with and 8 without other white matter comorbidities) and 15 patients without MS (8 with migraine and 7 misdiagnosed with MS). The fully automated technique replicated previous work that used manual adjudications^{7,11–16} by demonstrating that proportions of lesions with the CVS differ significantly between MS and its mimics. Additionally, the automated biomarkers, ψ_i and ψ_i^w , were found to have strong diagnostic ability, with areas under the curve of 0.84 and 0.88 and optimal sensitivity/specificity of approximately 0.94/0.70. There is also great promise for this algorithm to perform consistently across study sites and MR imaging scanners because in-house preprocessing and lesion-segmentation methods can be easily substituted and the remaining steps (obtaining vesselness scores, finding lesion centers, and calculating CVS probabilities) do not require parameter tuning.

Most important, the automated biomarkers presented in this study did not perform as well as previously obtained proportions of the CVS based on manual ratings of all lesions in patients' scans. Specifically, the 40% and 50% cutoffs used in prior manually rated studies often achieved perfect discrimination

between patients with and without MS,^{7,18} which the automated biomarkers were not able to replicate. However, previous work in a subset of the current sample showed that manual ratings of all lesions did not fully distinguish patients with migraine from those with MS and no white-matter comorbidities.¹⁵ This finding suggests that the patients without MS in the current sample might be more difficult to distinguish from those with MS using the CVS alone than the patients without MS in the studies that did obtain perfect discrimination.

Additionally, although the sensitivity and specificity obtained by these biomarkers were lower than those in the manually obtained CVS proportions, the biomarkers performed comparably with decision rules that use only a subset of lesions in a scan.¹⁷ Thus, while automated adjudication of every lesion in a scan is not yet as accurate as manual adjudication of every lesion in a scan, the proposed automated method shows promise as an alternative to other clinically feasible methods for identifying inflammatory de-

myelination. Further study and refinement of this technique have the potential to yield biomarkers that are both feasible for use in the clinic and comparable in accuracy and reliability with CVS proportions obtained by manual adjudication.

There are several important limitations to the proposed algorithm. First, biomarker values were found to be lower than previously reported CVS proportions for patients with MS and higher than previously reported CVS proportions for those without MS. It is possible that this effect is due to errors in lesion segmentation, which would pull the values of participants with and without MS toward each other due to the assessment of noninformative false-positive lesions. Because this method allows in-house lesion segmentation algorithms to be applied, the impact of false-positive lesions could potentially be mitigated in practice. It is also possible that the effect is due to false-positives or false-negatives in automated CVS assessment. Future work will use manual lesion-level assessments to tease apart these potential sources.

Additionally, the exclusion of 9 of the 40 subjects due to noise in the T2*-EPI scan represents a potential weakness of this automated method. However, robustness analysis found that the performance of the method on the full sample was not drastically reduced compared with the high-quality subset. This finding suggests that in clinical practice, a great deal of motion would not render a scan useless but instead may be an additional consideration for clinicians when interpreting the results of the algorithm.

CONCLUSIONS

Although the potential clinical implications of an automated tool for CVS adjudication call for further study and refinement of such techniques, the current study demonstrates the promising performance of a fully automated method for detecting CVS in white matter lesions. To our knowledge, this is the first automated technique for this challenging aspect of MS diagnosis and represents an important step forward toward a specific MR imaging biomarker for MS lesions.

Disclosures: Jordan D. Dworkin—RELATED: Grant: National Institutes of Health*. Andrew Solomon—UNRELATED: Consultancy: Teva Pharmaceuticals, Biogen, EMD Serono, Genentech, Comments: consulting and/or advisory boards; Grants/Grants Pending: Biogen, Comments: funding for research*. Dzung L. Pham—RELATED: Grant: National Multiple Sclerosis Society, Comments: support from NMSS RG-1507-05243*; UNRELATED: Travel/Accommodations/Meeting Expenses Unrelated to Activities Listed: Magnetic Resonance Imaging in MS, Comments: gave an invited talk at the Magnetic Resonance Imaging in MS plenary meeting and workshop in April 2018. Although about MS, the talk was unrelated to the work in this article. Daniel Ontaneda—UNRELATED: Consultancy: Biogen Idec, Genzyme, Merck; Expert Testimony: Novartis, Genzyme, Genentech*. Daniel S. Reich—RELATED: Grant: National Multiple Sclerosis Society, Conrad N. Hilton Foundation; UNRELATED: Expert Testimony: Leventhal & Puga; Grants/Grants Pending: National Multiple Sclerosis Society, Conrad N. Hilton Foundation, Adelson Medical Research Foundation*; Payment for Development of Educational Presentations: At the Limits; Travel/Accommodations/Meeting Expenses Unrelated to Activities Listed: National MS Society, Race to Erase MS Foundation, Adelson Medical Research Foundation,ECTRIMS, LACTRIMS, ACTRIMS, Consortium of MS Centers, MS Society of Canada, Neurological Research Support Society (Istanbul), Alberta MS Network, University of British Columbia, Mayo Clinic, Gordon Research Conferences, Comments: invitations from nonprofit foundations for travel to present scientific lectures or act as federal liaison to an advisory board.* Russell T. Shinohara—RELATED: Grant: National Institutes of Health, National Multiple Sclerosis Society, Race to Erase MS*; UNRELATED: Board Membership: Genentech/Roche*; Consultancy: Genentech/Roche*; Grants/Grants Pending: National Institutes of Health*; Travel/Accommodations/Meeting Expenses Unrelated to Activities Listed: European Committee for Treatment and Research in Multiple Sclerosis, Comments: travel grant for conference attendance. *Money paid to the institution.

REFERENCES

- McDonald WI, Compston A, Edan G, et al. **Recommended diagnostic criteria for multiple sclerosis: guidelines from the International Panel on the Diagnosis of Multiple Sclerosis.** *Ann Neurol* 2001;50:121–127 Medline
- Solomon AJ, Klein EP, Bourdette D. **“Undiagnosing” multiple sclerosis: the challenge of misdiagnosis in MS.** *Neurology* 2012;78:1986–91 CrossRef Medline
- Solomon AJ, Bourdette DN, Cross AH, et al. **The contemporary spectrum of multiple sclerosis misdiagnosis: a multicenter study.** *Neurology* 2016;87:1393–99 CrossRef Medline
- Aliaga ES, Barkhof F. **MRI mimics of multiple sclerosis.** *Handb Clin Neurol* 2014;122:291–316 CrossRef Medline
- Miller DH, Weinshenker BG, Filippi M, et al. **Differential diagnosis of suspected multiple sclerosis: a consensus approach.** *Mult Scler* 2008;14:1157–74 CrossRef Medline
- Fog T. **On the vessel-plaque relationships in the brain in multiple sclerosis.** *Acta Neurol Scand Suppl* 1964;40:(Suppl 10):9–15 Medline
- Tallantyre EC, Dixon JE, Donaldson I, et al. **Ultra-high-field imaging distinguishes MS lesions from asymptomatic white matter lesions.** *Neurology* 2011;76:534–39 CrossRef Medline
- Reichenbach JR, Venkatesan R, Schilling DJ, et al. **Small vessels in the human brain: MR venography with deoxyhemoglobin as an intrinsic contrast agent.** *Radiology* 1997;204:272–77 CrossRef Medline
- Sati P, George IC, Shea C, et al. **FLAIR*: a combined MR contrast technique for visualizing white matter lesions and parenchymal veins.** *Radiology* 2012;265:926–32 CrossRef Medline
- Campion T, Smith RJ, Altmann DR, et al. **FLAIR* to visualize veins in white matter lesions: a new tool for the diagnosis of multiple sclerosis?** *Eur Radiol* 2017;27:4257–63 CrossRef Medline
- Kilsdonk ID, Wattjes MP, Lopez-Soriano A, et al. **Improved differentiation between MS and vascular brain lesions using FLAIR* at 7 Tesla.** *Eur Radiol* 2014;24:841–49 CrossRef Medline
- Kister I, Herbert J, Zhou Y, et al. **Ultrahigh-field MR (7 T) imaging of brain lesions in neuromyelitis optica.** *Mult Scler* 2013;2013:398259 CrossRef Medline
- Mistry N, Abdel-Fahim R, Samaraweera A, et al. **Imaging central veins in brain lesions with 3-T T2*-weighted magnetic resonance imaging differentiates multiple sclerosis from microangiopathic brain lesions.** *Mult Scler* 2016;22:1289–96 CrossRef Medline
- Sinnecker T, Dörr J, Pfueller CF, et al. **Distinct lesion morphology at 7-T MRI differentiates neuromyelitis optica from multiple sclerosis.** *Neurology* 2012;79:708–14 CrossRef Medline
- Solomon AJ, Schindler MK, Howard DB, et al. **“Central vessel sign” on 3T FLAIR* MRI for the differentiation of multiple sclerosis from migraine.** *Ann Clin Transl Neurol* 2016;3:82–87 CrossRef Medline
- Wuerfel J, Sinnecker T, Ringelstein EB, et al. **Lesion morphology at 7 Tesla MRI differentiates Susac syndrome from multiple sclerosis.** *Mult Scler* 2012;18:1592–99 CrossRef Medline
- Solomon AJ, Watts R, Ontaneda D, et al. **Diagnostic performance of central vein sign for multiple sclerosis with a simplified three-lesion algorithm.** *Mult Scler* 2018;24:750–57 CrossRef Medline
- Maggi P, Absinta M, Grammatico M, et al. **Central vein sign differentiates multiple sclerosis from central nervous system inflammatory vasculopathies.** *Ann Neurol* 2018;83:283–94 CrossRef Medline
- Sati P, Oh J, Constable RT, et al; NAIMS Cooperative. **The central vein sign and its clinical evaluation for the diagnosis of multiple sclerosis: a consensus statement from the North American Imaging in Multiple Sclerosis Cooperative.** *Nat Rev Neurol* 2016;12:714–22 CrossRef Medline
- Frangi AF, Niessen WJ, Vincken KL, et al. **Multiscale vessel enhancement filtering.** In: Wells WM, Colchester A, Delp S, eds. *Proceedings of Medical Image Computing and Computer-Assisted Intervention—MICCAI’98*, Cambridge, Massachusetts, October 11–18, 1998
- Valcarcel AM, Linn KA, Vandekar SN, et al. **MIMoSA: an automated method for intermodal segmentation analysis of multiple sclerosis brain lesions.** *J Neuroimaging* 2018;28:389–98 CrossRef Medline

22. R: A Language and Environment for Statistical Computing. <http://www.r-project.org>. Accessed June 19, 2018
23. Sweeney EM, Shinohara RT, Shiee N, et al. **OASIS is automated statistical inference for segmentation, with applications to multiple sclerosis lesion segmentation in MRI.** *Neuroimage Clin* 2013;2: 402–13 [CrossRef Medline](#)
24. Dworkin JD, Linn KA, Oguz I, et al; North American Imaging in Multiple Sclerosis Cooperative. **An automated statistical technique for counting distinct multiple sclerosis lesions.** *AJNR Am J Neuroradiol* 2018;39:626–33 [CrossRef Medline](#)
25. Oguz I, Carass A, Pham DL, et al. **Dice overlap measures for objects of unknown number: application to lesion segmentation.** In: Crimi A, Bakas S, Kuijff H, eds. *Brainlesion: Glioma, Multiple Sclerosis, Stroke and Traumatic Brain Injuries*. Berlin: Springer-Verlag International Publishing; 2018;10670:3–14
26. Zhang Y, Brady M, Smith S. **Segmentation of brain MR images through a hidden Markov random field model and the expectation-maximization algorithm.** *IEEE Trans Med Imaging* 2001;20:45–57 [CrossRef Medline](#)
27. Perona P, Malik J. **Scale-space and edge detection using anisotropic diffusion.** *IEEE Trans Pattern Anal Mach Intell* 1990;12:629–39 [CrossRef](#)
28. Sati P1, Thomasson DM, Li N, et al. **Rapid, high-resolution, whole-brain, susceptibility-based MRI of multiple sclerosis.** *Mult Scler* 2014;20:1464–70 [CrossRef Medline](#)
29. Tustison NJ, Avants BB, Cook PA, et al. **N4ITK: improved N3 bias correction.** *IEEE Trans Med Imaging* 2010;29:1310–20 [CrossRef Medline](#)
30. Carass A, Wheeler MB, Cuzzocreo J, P, et al. **A joint registration and segmentation approach to skull stripping.** <http://www.iacl.ece.jhu.edu/~prince/pubs/2007-ISBI-Carass-SkullStripping.pdf>. Accessed June 19, 2018
31. DeLong E, DeLong DM, Clarke-Pearson DL. **Comparing the areas under two or more correlated receiver operating characteristic curves: a nonparametric approach.** *Biometrics* 1988;44:837–45 [CrossRef Medline](#)
32. Robin X, Turck N, Hainard A, et al. **pROC: an open-source package for R and S+ to analyze and compare ROC curves.** *BMC Bioinformatics* 2011;12:77 [CrossRef Medline](#)