



Discover Generics

Cost-Effective CT & MRI Contrast Agents



FRESENIUS
KABI

WATCH VIDEO

AJNR

Optimal Contrast Concentration for CT-Guided Epidural Steroid Injections

P.G. Kranz, M. Abbott, D. Abbott and J.K. Hoang

AJNR Am J Neuroradiol 2014, 35 (1) 191-195

doi: <https://doi.org/10.3174/ajnr.A3626>

<http://www.ajnr.org/content/35/1/191>

This information is current as
of June 23, 2025.

Optimal Contrast Concentration for CT-Guided Epidural Steroid Injections

P.G. Kranz, M. Abbott, D. Abbott, and J.K. Hoang



ABSTRACT

BACKGROUND AND PURPOSE: Contrast is used in CT-guided epidural steroid injections to ensure proper needle placement. Once injected, undiluted contrast often obscures the needle, hindering subsequent repositioning. The purpose of this investigation was to establish the optimal contrast dilution for CT-guided epidural steroid injections.

MATERIALS AND METHODS: This investigation consisted of an initial phantom study, followed by a prospective, randomized, single-center trial assessing a range of contrast dilutions. In the phantom study, a phantom housing a chamber containing a 22-gauge needle and various dilutions of contrast was scanned, and images were evaluated for needle visibility. On the basis of these results, concentrations of 66, 100, 133, and 150 mg/mL iodine were selected for evaluation in a clinical study. Patients presenting for CT-guided epidural steroid injections were randomly assigned to a contrast dilution, and images from the procedure were evaluated by 2 readers blinded to the contrast assignment. Needle visibility was scored by use of a 5-point scale.

RESULTS: In the phantom study, the needle was not visible at contrast concentrations of ≥ 133 mg/mL. In the clinical study, needle visibility was strongly associated with contrast concentration ($P < .0001$). Significant improvements in visibility were found in 66 mg/mL and 100 mg/mL compared with higher iodine concentrations; no difference was found comparing 66 mg/mL with 100 mg/mL iodine. Neither injection location (cervical versus lumbar) nor technique (interlaminar versus transforaminal) influenced visibility scores.

CONCLUSIONS: For CT-guided epidural steroid injections, the optimal contrast concentration is 66–100 mg/mL iodine. Because these concentrations are not commercially available, proceduralists must dilute their contrast for such procedures.

ABBREVIATIONS: ESI = epidural steroid injections; ILES = interlaminar epidural steroid injection; TFESI = transforaminal epidural steroid injection; CTF = CT fluoroscopy

Imaging guidance is a critical component of safe and accurate needle placement during spinal epidural steroid injections (ESI).^{1–6} The injection of contrast medium during such image-guided procedures provides information on patterns of injectate spread and helps to avoid complications caused by inadvertent intrathecal or intravascular needle placement. When the pattern of injected contrast shows that the needle position is not ideal, the proceduralist may reposition the needle.

Although conventional fluoroscopy remains the most widely used technique for guidance, CT fluoroscopy (CTF) has become

increasingly used because of its ability to provide cross-sectional needle localization and excellent visualization of the regional soft tissues.^{7–10} When CT guidance is used, however, the attenuation of many commercially available contrast agents is often sufficient to obscure the needle tip after injection. This can hinder attempts at needle repositioning, and as a result, several authors have advocated the use of dilute contrast for CT-guided procedures. The recommendations for the degree of contrast dilution vary widely, have generally been empirically selected, and, to our knowledge, have not been systematically evaluated previously.

The purpose of this investigation was to establish the optimal iodine concentration in contrast material for use in CT-guided spine procedures. Our study design included a phantom study for the purpose of acquiring preliminary data, followed by a prospective, randomized trial of various contrast dilutions in conditions mirroring routine clinical practice.

MATERIALS AND METHODS

This investigation was conducted in 2 parts. The first part was a phantom study designed to narrow the range of contrast dilutions

Received January 4, 2013; accepted after revision March 20.

From the Departments of Radiology (P.G.K., M.A., J.K.H.) and Biostatistics and Bioinformatics (D.A.), Duke University Medical Center, Durham, North Carolina.

Paper previously presented in part at: Annual Meeting of the American Society of Neuroradiology, April 26, 2012; New York, New York.

Please address correspondence to Peter G. Kranz, MD, Department of Radiology, Box 3808, Duke University Medical Center, Durham, NC 27710; e-mail: peter.kranz@duke.edu

Evidence-Based Medicine Level 1.

<http://dx.doi.org/10.3174/ajnr.A3626>

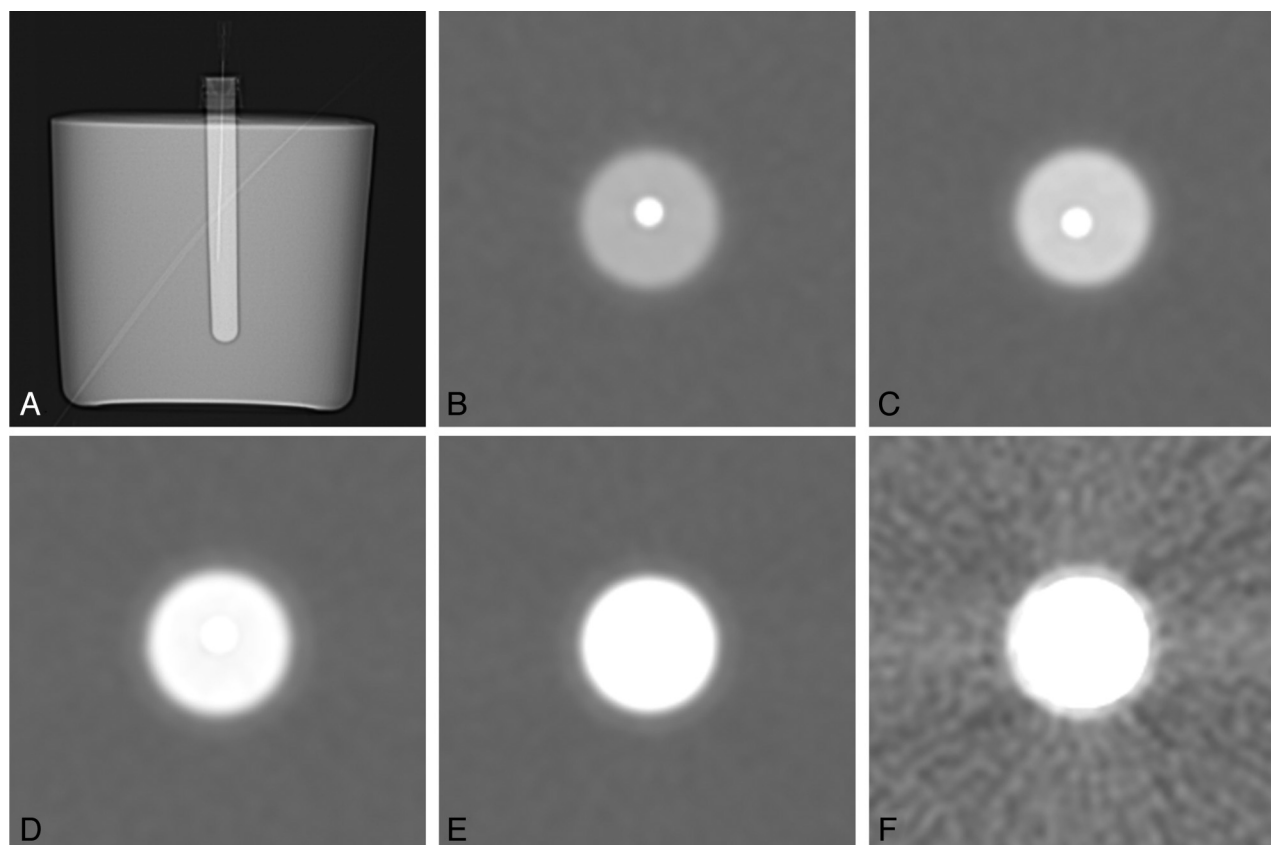


FIG 1. Phantom study assessing needle visibility. A, Scout image from CT demonstrating the configuration of the phantom. The central chamber houses contrast and a 22-gauge needle. Axial cross-sectional images of the chamber are shown with various contrast dilutions: 50 mg/mL (B), 66 mg/mL (C), 100 mg/mL (D), 133 mg/mL (E), and 150 mg/mL (F).

to be tested. The second part was a prospective, randomized, single-center trial assessing a range of contrast dilutions in actual CTF-guided epidural steroid injections. The study was approved by our local institutional review board and was compliant with the Health Insurance Portability and Accountability Act.

Part I: Phantom Study

We constructed a 15-cm-diameter cylindrical phantom composed of ballistics-grade gelatin (12% wt/vol) that housed a central cylindrical chamber capable of holding contrast. Contrast dilutions were prepared by diluting commercially available contrast medium containing 200 mg/mL iodine (iopamidol; Isovue-M 200, Bracco Diagnostics, Princeton, New Jersey) with preservative-free sterile saline to achieve 5 final iodine concentrations: 50, 66, 100, 133, and 150 mg/mL. The phantom's central chamber was filled with various dilutions of contrast, and a 22-gauge needle was secured into place, centered along the long axis of the chamber. The phantom was placed in a clinical CT scanner (LightSpeed 16; GE Healthcare, Milwaukee, Wisconsin) containing each contrast dilution and was scanned by use of the axial technique at a tube current of 10 mA and peak voltage of 120 kVp (Fig 1). The images were then reviewed by a neuroradiologist by use of the scanner's preset window/level setting for CTF procedures (window and level setting: 4000/465). Needle visibility was assessed by use of a 3-point scoring system, with a score of 0 indicating clear visibility of the needle against the background contrast, a score of 1 indicating borderline visibility, necessitating adjustment of the

window and level settings, and a score of 2 indicating inability to visualize the needle.

Part II: Clinical Study

On the basis of the results of the phantom study, we selected 4 contrast concentrations for use in the clinical study: 66, 100, 133, and 150 mg/mL iodine. Subjects were recruited from among adult patients presenting to a single neuroradiologist for CTF-guided interlaminar or transforaminal epidural steroid injections in the cervical or lumbar spine. A contraindication to iodinated contrast, such as a prior allergic reaction, was an exclusion criterion.

Once enrolled, subjects were randomly assigned to one of the contrast dilutions on the basis of a predetermined randomization schedule, and the clinically indicated procedure was performed. For patients scheduled for multiple injections in a single visit, a single-contrast dilution was used for all injections performed at that visit. All scans were performed on the same clinical scanner, which was the same scanner used to scan the phantom. For each procedure, tube current settings were at the discretion of the proceduralist and were based on body habitus and injection location.

Image Analysis

Images from the procedures were reviewed by use of a standardized window and level setting (4000/465) by 2 neuroradiologists, each with 5 years of experience performing CTF-guided steroid injections. The readers were blinded to the assigned contrast dilution. One of the readers was the same radiologist who per-

formed the injections; however, image review occurred 5 months after the end of patient enrollment, thereby mitigating the chance that any particular dilution could be recalled during analysis. Images were scored according to a 5-point scoring system (Table 1), which expanded the 3-point system used in the phantom study. Scores of -2 and -1 were added to account for the need to achieve adequate anatomic soft tissue contrast when performing clinical procedures. Representative examples of injections scored as optimal and at the extremes of the 5-point scale are shown in Fig 2. In 4 cases in which the readers disagreed by 2 points, the case was jointly reviewed by both readers and a consensus score was determined. Injection technique (interlaminar epidural steroid injection [ILESI] versus transforaminal epidural steroid injection [TFESI]) was also recorded.

Data Analysis

Data were analyzed with the use of SAS software (version 9.3, SAS Institute, Cary, North Carolina). Because there was more than 1 injection per subject in some cases, visibility scores were analyzed by means of the generalized estimating equations test of difference, assuming a multinomial distribution and a cumulative logit link function. A value of $P = .05$ was considered to be statistically significant for analysis of the effect of contrast concentration on needle visibility. Follow-up contrast statements in the generalized estimating equations test of difference model comparing multiple individual contrast concentrations as well as the effect of injection type (ie, ILESI versus TFESI) were analyzed with the use of a Bonferroni-corrected significance threshold of 0.0083.

RESULTS

In the phantom study, iodine concentrations of 50 and 66 mg/mL were associated with clear needle visualization, 100 mg/mL was found to be borderline for needle visualization, and concentra-

tions of 133 mg/mL and higher resulted in nonvisualization of the needle. Dilutions in the range of 66–150 mg/mL were selected for the clinical study because we anticipated that there would be a further reduction in iodine concentration as the contrast was injected and dispersed into the soft tissues.

In the clinical study, a total of 42 patients receiving a total of 60 injections were enrolled and randomly assigned. Mean patient age was 64 years (range, 20–89). There were 19 men and 23 women. Lumbar injections accounted for 55 of 60 procedures. Of the cervical injections, 3 were TFESIs and 2 were ILESIs. There was a similar proportion of TFESIs and ILESIs, with TFESIs accounting for 28 of 60 of all injections (47%) and ILESIs accounting for the remainder (53%). Tube current settings for the procedure ranged from 20–70 mA.

Needle visibility was found to be highly associated with contrast concentration ($P < .0001$). No association was found between visibility scores and anatomic location (cervical versus lumbar) ($P = .61$) or the combined variables of anatomic location and contrast concentration ($P = .20$).

Visibility scores for the individual contrast dilutions are presented in Table 2. Generally, concentrations of ≥ 133 mg/mL showed substantial numbers of injections in which the contrast was too concentrated to allow needle visualization (ie, score of $+2$). Of the concentrations < 133 mg/mL, a concentration of 66 mg/dL demonstrated the greatest percentage of optimal scores (44%) but was also assigned a score indicating unacceptable soft tissue contrast (ie, score of -2) in 21% of cases. Overall inadequate visibility (ie, a score of $+2$ or -2) was found in 8 of 32 cases for the 100 mg/mL concentration and 8 of 34 cases for the 66 mg/mL concentration.

With the use of a Bonferroni-corrected significance threshold of 0.0083, significant differences were found in visibility between the following dilutions: 66 mg/mL versus 133 mg/mL ($P < .0001$), 66 mg/mL versus 150 mg/mL ($P = .0004$), and 100 mg/mL versus 133 mg/mL ($P = .0005$). No difference was found in visibility between the 66 mg/mL and 100 mg/mL concentrations ($P = .069$).

Table 1: Five-point scoring system for the clinical study

	Too Concentrated		Optimal	Too Dilute	
Visibility score	+2	+1	0	-1	-2
Needle tip	Not visible	Borderline	Visible	Visible	Visible
Soft tissue contrast	Adequate	Adequate	Adequate	Borderline	Not acceptable

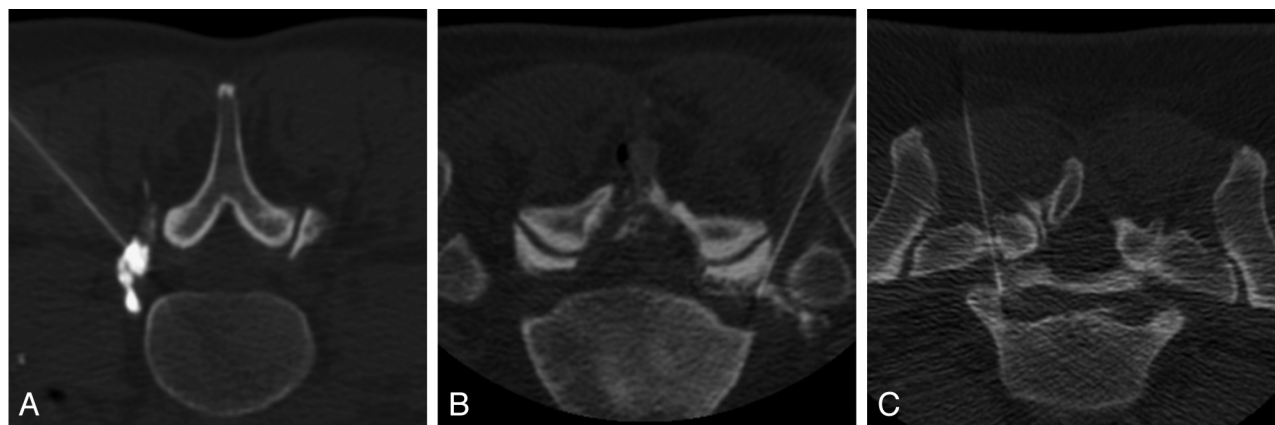


FIG 2. Axial CTF images show representative examples of visibility scores on the basis of our 5-point scoring system. A, Score of $+2$. The contrast is too dense to visualize the location of the needle tip. B, Score of 0. The needle tip can be distinguished from the injected contrast; adequate soft tissue contrast is also provided. C, Score of -2 . The injected contrast is too dilute to provide adequate soft tissue contrast.

Table 2: Visibility scores for the clinical study

	Visibility Score				
	-2	-1	0	+1	+2
Total scores (<i>n</i> = 120) (2 readers)	<i>n</i> = 9 (7.5%)	<i>n</i> = 10 (8.3%)	<i>n</i> = 34 (28.3%)	<i>n</i> = 25 (20.8%)	<i>n</i> = 42 (35.0%)
Iodine concentration					
66 mg/mL (<i>n</i> = 34)	<i>n</i> = 7 (20.6%)	<i>n</i> = 5 (14.7%)	<i>n</i> = 15 (44.1%)	<i>n</i> = 6 (17.6%)	<i>n</i> = 1 (2.9%)
100 mg/mL (<i>n</i> = 32)	<i>n</i> = 2 (6.3%)	<i>n</i> = 5 (15.6%)	<i>n</i> = 9 (28.1%)	<i>n</i> = 10 (31.3%)	<i>n</i> = 6 (18.8%)
133 mg/mL (<i>n</i> = 26)	<i>n</i> = 0 (0%)	<i>n</i> = 0 (0%)	<i>n</i> = 2 (7.7%)	<i>n</i> = 3 (11.5%)	<i>n</i> = 21 (80.8%)
150 mg/mL (<i>n</i> = 28)	<i>n</i> = 0 (0%)	<i>n</i> = 0 (0%)	<i>n</i> = 8 (28.6%)	<i>n</i> = 6 (21.4%)	<i>n</i> = 14 (50.0%)
Injection technique					
ILESI (<i>n</i> = 64)	<i>n</i> = 0 (0%)	<i>n</i> = 3 (4.7%)	<i>n</i> = 14 (21.9%)	<i>n</i> = 17 (26.6%)	<i>n</i> = 30 (46.9%)
TFESI (<i>n</i> = 56)	<i>n</i> = 9 (16.1%)	<i>n</i> = 7 (12.5%)	<i>n</i> = 20 (35.7%)	<i>n</i> = 8 (14.3%)	<i>n</i> = 12 (21.4%)

Table 3: Comparison of visibility scores on the basis of combined iodine concentration and injection technique

Iodine Concentration + Injection Technique	<i>P</i> Value ^a
(66 mg/mL and TFESI) versus (100 mg/mL and TFESI)	.011
(66 mg/mL and ILESI) versus (100 mg/mL and ILESI)	.016
(66 mg/mL and ILESI) versus (66 mg/mL and TFESI)	.051
(100 mg/mL and ILESI) versus (100 mg/mL and TFESI)	.021

^a *P* values are based on results of generalized estimating equations test of difference contrast statements with the use of a Bonferroni-corrected significance threshold of 0.0083.

To determine whether either the 66 mg/mL or 100 mg/mL concentration was superior for a particular injection technique (ILESI versus TFESI), we examined multiple combinations of contrast concentration and injection technique. These included comparison of visibility scores for TFESI with scores for ILESI at both 66 mg/mL and 100 mg/mL iodine, as well as scores for TFESI injections performed at 66 mg/mL with those performed at 100 mg/mL, and ILESI scores for the same concentrations (Table 3). Although we observed trends for several of these combinations, none of these comparisons achieved statistical significance by use of the corrected significance threshold of 0.0083.

DISCUSSION

The role of contrast in ESI is to confirm the epidural and extravascular location of the needle tip and to examine the spread of injectate toward the therapeutic target. In cases in which the contrast pattern indicates an undesirable needle position necessitating repositioning of the needle, the contrast attenuation must not obscure the visibility of the needle tip. Our investigation demonstrated that iodine concentration was highly associated with needle visibility ($P < .0001$) during CT-guided ESI and that at or above iodine concentrations of 133 mg/mL, the contrast was too attenuated to allow needle visualization. Furthermore, our results suggest that the optimal iodine concentration for such procedures is 66–100 mg/mL. Because commercially available contrast media used for spinal injections generally are available with iodine concentration of 180–200 mg/mL and higher, proceduralists seeking to optimize needle visibility during CT-guided spine procedures must dilute their contrast.

To our knowledge, ours is the first investigation to systematically evaluate the effect of contrast concentration on needle visibility in CT-guided procedures. Previous authors have recommended the use of dilute contrast for use in CT-guided procedures, but the suggested dilutions have generally been empirically determined and vary widely among authors. For cervical TFESI, contrast dilutions of 1:10, 1:2, 1:1, and 3:1 have been reported by different authors, with the use of either saline or local anesthetic as the diluent.^{7,10–13} A report of CT-guided celiac plexus neurolysis technique recommended the use of a contrast dilution of 1:4 with anesthetic.¹⁴ In many cases, the dilution ratios were re-

ported, but details of the contrast medium being diluted or its iodine concentration were not specified. Thus, our study aimed to systematically determine the optimal iodine concentration for use in CT-guided ESI. In our investigation, the contrast concentrations that produced the highest proportions of acceptable scores correspond to dilutions of 1:1 (100 mg/mL) or 1:2 (66 mg/mL).

Visibility is particularly important when performing CT-guided procedures requiring high degrees of precision in needle placement, such as with cervical epidural steroid injections (Fig 3). In a previous investigation, we found that needle repositioning was necessary after contrast injection in 16% of cervical TFESIs because of the undesirable spread of contrast in the epidural space, subperiosteal injection, or intravascular injection.¹⁵ In cases in which critical neural and vascular structures are in close proximity to the target needle placement, the inability to visualize the needle tip and make controlled adjustments to its position increases the risk for catastrophic consequences. The need to decrease iodine concentration to allow visibility of the needle must be balanced against the need for adequate soft tissue contrast. Overdilution of contrast could result in inability to confidently confirm epidural location of the needle, failure to adequately assess the extent and direction of spread of injectate in the epidural space, or failure to detect intrathecal or intravascular injection. The ideal concentration of contrast would permit needle visibility while maintaining good visibility of the contrast as it disperses in the soft tissues surrounding the injection site.

The 5-point scoring system that we used for the clinical study was designed to balance these competing needs. We found that needle visibility against the background contrast pool is no longer possible at concentrations ≥ 133 mg/mL under phantom conditions and is unacceptable in most clinical cases. Notably, we did not find a statistically significant difference in visibility scores between the 66 mg/mL and 100 mg/mL concentrations, nor did we identify a subgroup on the basis of injection location or technique in which one concentration or the other was superior. We did find that at a concentration of 100 mg/mL iodine, most unacceptable visibility scores resulted from a contrast concentration too high to allow needle visibility. Conversely, at 66 mg/dL, most unacceptable scores resulted from overdiluted contrast and insufficient

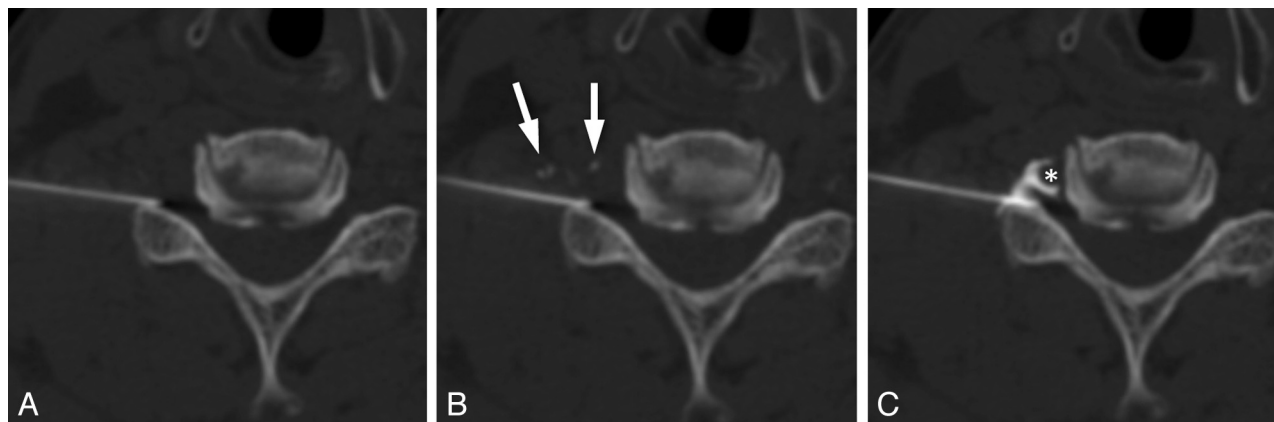


FIG 3. Importance of precise needle placement in cervical epidural steroid injections. A, Axial CTF image obtained before contrast injection. B, Image obtained immediately after contrast injection shows transient filling of small vessels (arrows). No epidural spread is seen. C, Image obtained after advancing the needle <2 mm demonstrates foramina epidural contrast spread, with no vascular filling. Note the close proximity of the needle tip to the vertebral artery (*). This case highlights the importance of accurate localization of the needle tip and the need to be able to make small but precise adjustments in needle position during epidural injections.

soft tissue contrast. Yet, for both dilutions, there were cases scored as too concentrated (ie, score of +2) as well as others scored as too dilute (ie, score of -2), suggesting that some component of needle visibility may depend on idiosyncratic factors related to the anatomy or tissue composition of the injection site or individual perceptual differences by the scorers. Although our investigation focused on ESI, a variety of other CT-guided procedures use contrast injection, and we would anticipate that our results would be generalizable to other techniques in which contrast is injected into soft tissue.

There are several limitations to this investigation. First, the number of injections in this prospective investigation was selected to evaluate our primary hypothesis that there would be a difference in needle visibility on the basis of concentration. There are subgroups of injections, however, for which our total number of subjects may be insufficiently powered to detect differences. With larger numbers, it is possible that differences in optimal contrast concentration could be found between interlaminar epidural and transforaminal injections in which we observed nonsignificant trends or between cervical and lumbar injections. Second, the degree to which any single contrast attenuation is considered optimal may be in part influenced by the specific considerations of the procedure being performed, the relative hazards of overdilution versus underdilution of contrast in any particular context, and by the subjective preferences of the proceduralist. Our determination of optimal iodine concentration should be considered a general guide but can be tailored according to the needs of individual cases and operators.

CONCLUSIONS

Optimal iodine concentration in contrast used during CT-guided spine procedures is 66–100 mg/mL. This range provides the greatest balance between visualizing the needle and providing adequate tissue contrast. Because these concentrations are not currently commercially available, the use of a 2:1 or 1:1 dilution of contrast by proceduralists performing CT-guided ESI would be necessary, assuming a starting contrast concentration of 200 mg/mL iodine.

REFERENCES

1. Provenzano DA, Fanciullo G. Cervical transforaminal epidural steroid injections: should we be performing them? *Reg Anesth Pain Med* 2007;32:169–70
2. McGrath JM, Schaefer MP, Malkamaki DM. Incidence and characteristics of complications from epidural steroid injections. *Pain Med* 2011;12:726–31
3. Benny B, Azari P, Briones D. Complications of cervical transforaminal epidural steroid injections. *Am J Phys Med Rehabil* 2010;89:601–07
4. White AH, Derby R, Wynne G. Epidural injections for the diagnosis and treatment of low-back pain. *Spine* 1980;5:78–86
5. Stojanovic MP, Vu TN, Caneris O, et al. The role of fluoroscopy in cervical epidural steroid injections: an analysis of contrast dispersal patterns. *Spine* 2002;27:509–14
6. Glaser SE, Shah RV. Root cause analysis of paraplegia following transforaminal epidural steroid injections: the ‘unsafe’ triangle. *Pain Physician* 2010;13:237–44
7. Wald JT, Maus TP, Geske JR, et al. Safety and efficacy of CT-guided transforaminal cervical epidural steroid injections using a posterior approach. *AJNR Am J Neuroradiol* 2012;33:415–19
8. Chang A, Pochert S, Romano C, et al. Safety of 1000 CT-guided steroid injections with air used to localize the epidural space. *AJNR Am J Neuroradiol* 2011;32:E175–77
9. Silbergleit R, Mehta BA, Sanders WP, et al. Imaging-guided injection techniques with fluoroscopy and CT for spinal pain management. *Radiographics* 2001;21:927–39
10. Wagner AL. CT fluoroscopic-guided cervical nerve root blocks. *AJNR Am J Neuroradiol* 2005;26:43–44
11. Hoang JK, Apostol MA, Kranz PG, et al. CT fluoroscopy-assisted cervical transforaminal steroid injection: tips, traps, and use of contrast material. *AJR Am J Roentgenol* 2010;195:888–94
12. Miller TS, Fruauff K, Farinhas J, et al. Lateral decubitus positioning for cervical nerve root block using CT image guidance minimizes effective radiation dose and procedural time. *AJNR Am J Neuroradiol* 2013;34:23–28
13. Kranz PG, Raduazo PA. Technique for CT fluoroscopy-guided cervical interlaminar steroid injections. *AJR Am J Roentgenol* 2012;198:675–77
14. Wang PJ, Shang MY, Qian Z, et al. CT-guided percutaneous neurolytic celiac plexus block technique. *Abdom Imaging* 2006;31:710–18
15. Hoang JK, Massoglia DP, Apostol MA, et al. CT-guided cervical transforaminal steroid injections: where should the needle tip be located? *AJNR Am J Neuroradiol* 2013;34:688–92