



## Discover Generics

Cost-Effective CT & MRI Contrast Agents

 **FRESENIUS  
KABI**

[WATCH VIDEO](#)

# AJNR

This information is current as  
of June 19, 2025.

## **Brain Tissue Oxygen Monitoring to Assess Reperfusion after Intra-Arterial Treatment of Aneurysmal Subarachnoid Hemorrhage – Induced Cerebral Vasospasm: A Retrospective Study**

E.M. Deshaies, W. Jacobsen, A. Singla, F. Li and R. Gorji

*AJNR Am J Neuroradiol* 2012, 33 (7) 1411-1415

doi: <https://doi.org/10.3174/ajnr.A2971>

<http://www.ajnr.org/content/33/7/1411>

## CLINICAL REPORT

E.M. Deshaies  
W. Jacobsen  
A. Singla  
F. Li  
R. Gorji

# Brain Tissue Oxygen Monitoring to Assess Reperfusion after Intra-Arterial Treatment of Aneurysmal Subarachnoid Hemorrhage—Induced Cerebral Vasospasm: A Retrospective Study

**BACKGROUND AND PURPOSE:** Cerebral vasospasm resistant to medical management frequently requires intra-arterial spasmolysis. Angiographic resolution of vasospasm does not provide physiologic data on the adequacy of reperfusion. We recorded pre- and postspasmolysis  $PbO_2$  data in the endovascular suite to determine whether this physiologic parameter could be used to determine when successful reperfusion was established.

**MATERIALS AND METHODS:** Eight patients with 10 Licox monitors and cerebral vasospasm underwent intra-arterial spasmolysis. Pre- and postspasmolytic  $PbO_2$  was recorded for comparison. Other physiologic parameters, such as CPP, ICP,  $SaO_2$ , and  $Fio_2$ , were also recorded.

**RESULTS:** Mean prespasmolysis  $PbO_2$  recordings were 35.2 and 27.3 for the mild-to-moderate and moderate-to-severe vasospasm group, respectively. Mean postspasmolysis  $PbO_2$  increased to 40.3 and 38.4, respectively, which was statistically significant ( $P < .05$ ) for both groups. In 100% of instances in the moderate-to-severe group and 83% of instances in mild-to-moderate group, the mean  $PbO_2$  increased after spasmolysis and correlated with improvement in angiographic vasospasm. Other physiologic parameters, such as CPP, ICP,  $SaO_2$ , and  $Fio_2$ , did not show any statistically significant difference before and after spasmolysis.

**CONCLUSIONS:**  $PbO_2$  monitoring provides the interventionalist with an objective physiologic parameter to determine adequate spasmolysis. Further investigation is needed to establish target  $PbO_2$  rates indicative of adequate reperfusion, which can be used in the endovascular suite.

**ABBREVIATIONS:** ACA = anterior cerebral artery; CPP = cerebral perfusion pressure; CV = cerebral vasospasm;  $Fio_2$  = fraction of inspired oxygen; ICP = intracranial pressure; ICU = intensive care unit;  $PbO_2$  = partial brain tissue oxygen tension;  $SaO_2$  = arterial oxygen saturation; SE = standard error

CV frequently results in devastating neurologic outcomes limiting functional recovery and a return to an independent lifestyle after aneurysmal SAH. More than 30% of patients will develop severe symptomatic CV and delayed neurologic deficits after SAH, but this number has been reported by Fisher et al<sup>1</sup> to exceed 90% in those with large clot burdens. In severe cases of CV, traditional medical management protocols by using “triple-H” therapy (hypertension, hypervolemia, hemodilution) will fail to establish adequate reperfusion and will require emergent intra-arterial spasmolytic therapy in the endovascular suite.<sup>2,3</sup>

Currently, the efficacy of spasmolytic therapy and the adequacy of reperfusion are established by a subjective comparison of pre- and posttreatment angiography rather than by objective physiologic parameters. This method is of concern when large-vessel spasm has resolved and the interventionalist notices sluggish flow in the distal arterial tree suggestive of small-vessel spasm, making it difficult to assess whether adequate perfusion has been truly re-established.

On this premise, we hypothesized that measured  $PbO_2$  would correlate with the severity of large-vessel arterial vasospasm, would increase after spasmolytic therapy, and would correlate with angiographically confirmed improvement in CV.

## Materials and Methods

Approval was obtained for this study from our institutional review board at SUNY Upstate Medical University. All charts and radiographic images were reviewed retrospectively for this study.

## General Patient Population

Eight patients with poor-grade aneurysmal SAH (Hunt and Hess scale 4–5 or grade 3 who later deteriorated clinically from CV), who were admitted to our neuroscience ICU and required ICP monitoring and external ventricular drainage, also underwent Licox intraparenchymal monitor (Integra Life Sciences, Plainsboro, New Jersey) placement when CV was detected radiographically. Licox monitors were placed unilaterally for radiographic findings of focal CV (6 patients) and bilaterally for diffuse CV (2 patients). Eight patients (with a total of 10 Licox monitors) in this study underwent 29 cerebral angiograms for the diagnosis and treatment of CV.

## Licox Insertion and Management

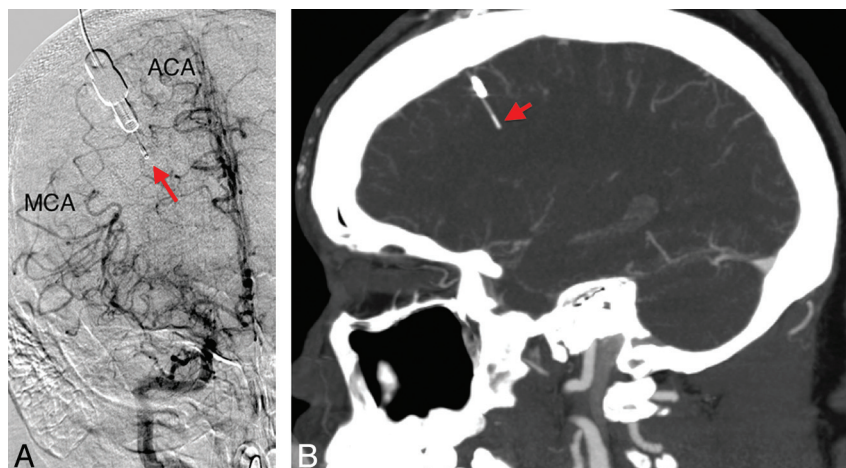
Because of their neurologic conditions, all patients with SAH in this review required mechanical ventilation and sedation so that complete

Received September 6, 2011; accepted after revision October 25.

From the Departments of Neurosurgery (E.M.D., W.J., A.S.) and Anesthesiology (F.L., R.G.), SUNY Upstate Medical University, Syracuse, New York.

Please address correspondence to Eric M. Deshaies, MD, Department of Neurosurgery, SUNY Upstate Neurovascular Center, SUNY Upstate Medical University, 750 East Adams St, Syracuse, NY 13210; e-mail: deshaiee@upstate.edu.

<http://dx.doi.org/10.3174/ajnr.A2971>



**Fig 1.** A, Digital subtraction angiography demonstrating the tip of the Licox monitor in the ACA-MCA watershed territory. B, Reconstructed sagittal CT angiogram demonstrates the intraparenchymal location and depth of the fiberoptic Licox cable tip.

and reliable neurologic assessments could be performed consistently. The Licox monitor was placed to continuously monitor ICP, brain temperature, and  $PbO_2$ . All Licox monitors were placed at the Kocher point according to standard protocol for intraparenchymal catheter placement positioned at the ACA-MCA watershed territories (Fig 1A), about 2 cm deep into the brain parenchyma (Fig 1B). The Licox monitor was placed on the side where the cerebral angiogram demonstrated CV.

Licox readings were recorded hourly during routine data collection. The mean of six 1-hour readings before and after angiography was used for data analysis, totaling a 12-hour window. We included 6 readings at 1-hour intervals to minimize the chances of overlapping CV episodes because some patients underwent intra-arterial spasmolytic therapy twice daily. The Licox readings were monitored continuously during the intervention as well; however, to prevent changes in head elevation affecting our data readings, the Licox data analyzed in this study included only those readings obtained when the patient's head was at  $30^\circ$ – $45^\circ$ , to avoid changes in  $PbO_2$  that could result from changes in CPP with differences in head positioning. None of the readings during patient transport and positioning formed part of this data analysis.

CPP, ICP,  $SpO_2$ , and  $FiO_2$  were also recorded hourly and 6 readings at 1-hour intervals before and after the spasmolysis therapy were analyzed along with  $PbO_2$ . Partial pressure of arterial oxygen ( $PaO_2$ ) was not routinely checked before and after cerebral angiography as per our standard of care. The patients had daily routine labs including complete blood count; if their hematocrit level dropped to  $<30$ , they were transfused to maintain a hematocrit level  $\geq 30$ .

### Routine Screening for CV

Daily transcranial Doppler studies and CT angiography and CT perfusion studies on postbleeding days 4, 6, and 10 were routinely performed to screen for CV. If CV was suspected on the basis of these imaging modalities, the patient was brought to angiography for confirmation; if already failing maximal medical treatment, the patient underwent intra-arterial spasmolysis.

### Management of CV

Our medical management protocols are as follows: In response to falling  $PbO_2$ , the inspired  $O_2$  was gradually increased to 100% to improve the  $PbO_2$ . If this was unsuccessful or only transiently suc-

cessful, then cerebral angiography was performed after propofol or midazolam (Versed) infusions, the standard sedating agents used in our ICU. The patients included in this study were already on these medications while they were kept sedated and ventilated in the ICU. Once CV was confirmed on angiography, spasmolysis was performed by using either intra-arterial pharmaceutical agents (verapamil and nitroglycerin) or a combination of pharmaceutical and mechanical (balloon angioplasty) techniques, based on the preference of the interventionalist.

### Angiographic Parameters for Measuring CV

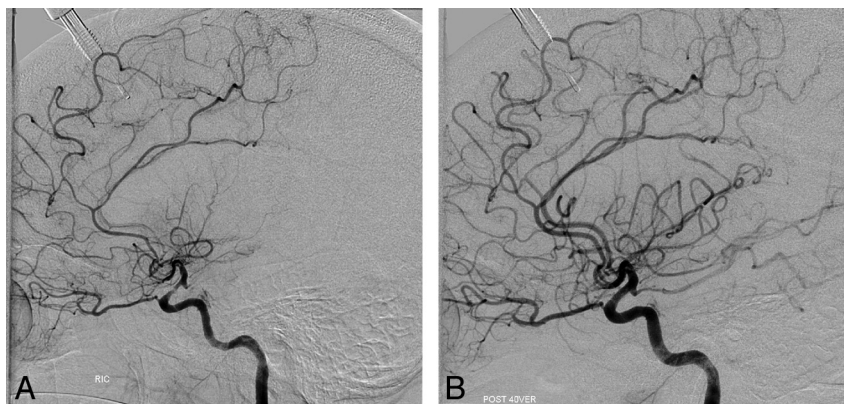
Angiographic parameters used to determine the severity of CV were based on the percentage of stenosis of the parent artery: mild-to-moderate spasm ( $<50\%$  arterial stenosis) and moderate-to-severe spasm ( $\geq 50\%$  arterial stenosis).  $PbO_2$  levels before and after spasmolytic therapy were determined in both groups.

### Data Analysis

Pre- and postspasmolysis  $PbO_2$  and physiologic parameters, including CPP, ICP,  $SpO_2$ , and  $FiO_2$ , were analyzed by using the paired-samples *t* test; statistical significance was defined as  $P < .05$ . Data analysis was performed by using the commercially available Statistical Package for the Social Sciences software, Version 14 (SPSS, Chicago, Illinois).

### Results

Data from 8 patients with 10 Licox monitors were analyzed in this retrospective study. In these 8 patients, a total of 29 cerebral angiograms were obtained when CV was detected with noninvasive radiographic imaging. In every instance, CV was treated pharmacologically with intra-arterial verapamil or nitroglycerin or with combined pharmaceutical and mechanical spasmolysis (performed in 1 patient with severe supraclinoid ICA CV unresponsive to pharmaceutical spasmolysis). Postspasmolytic angiography demonstrated alleviation of CV in every case (Fig 2A, -B). On the basis of the severity of angiographic CV before spasmolysis, treatment events were categorized into 2 groups: 1) mild-to-moderate CV ( $<50\%$  arterial stenosis), and 2) moderate-to-severe CV ( $\geq 50\%$  arterial stenosis). The percentage improvement in  $PbO_2$  in the mild-to-



**Fig 2.** Prespasmolytic (A) and postspasmolytic (B) cerebral angiograms demonstrating improvement in cerebral vasospasm in ICA, ACA, and MCA vessels after intra-arterial verapamil infusion.

Mild-to-moderate and moderate-to-severe group physiologic parameters before and after spasmolytic therapy along with percentage improvement in PbO <sub>2</sub> after spasmolytic therapy							
Vasospasm Severity	Timing	PbO <sub>2</sub> <sup>a</sup> (mm Hg ± SE)	CPP <sup>b</sup> (mm Hg ± SE)	ICP <sup>b</sup> (mm Hg ± SE)	SaO <sub>2</sub> <sup>b</sup> (mm Hg ± SE)	FiO <sub>2</sub> <sup>b</sup> (mm Hg ± SE)	% PbO <sub>2</sub> Improvement
Mild-mod	Prespasmolysis	35.2 ± 3.1	110.9 ± 3.5	5.4 ± 2.2	99.6 ± 0.3	55.7 ± 3.5	14
	Postspasmolysis	40.3 ± 3.1	107.9 ± 4.0	4.6 ± 1.0	99.5 ± 0.3	55.5 ± 4.1	
Mod-sev	Prespasmolysis	27.3 ± 3.1	116.7 ± 3.8	5.8 ± 1.3	99.8 ± 0.2	57.5 ± 6.1	40
	Postspasmolysis	38.4 ± 3.2	113.9 ± 4.4	7.8 ± 1.9	99.2 ± 0.5	57.0 ± 6.1	

**Note:**—Mild-mod indicates mild-moderate; Mod-sev, moderate-severe.

<sup>a</sup> Statistical significance ( $P \leq .05$ ).

<sup>b</sup> No statistical significance ( $P > .05$ ).

moderate and moderate-to-severe groups was 14% and 40%, respectively (Table).

Statistical analysis by using the paired-samples *t* test demonstrated a statistically significant improvement in PbO<sub>2</sub> after intra-arterial spasmolysis for both the mild-to-moderate ( $P = .002$ ) and the moderate-to-severe groups ( $P = .000$ ). Other physiologic parameters, such as CPP, ICP, SaO<sub>2</sub>, and FiO<sub>2</sub>, and head elevation did not show any statistically significant difference between the prespasmolysis and postspasmolysis periods. We also compared the mean PbO<sub>2</sub> between mild-to-moderate and moderate-to-severe groups in the prespasmolysis period, and though the difference was not statistically significant, it did suggest a trend ( $P = .067$ ).

### Mild-to-Moderate Vasospasm Group

Fifteen cerebral angiograms demonstrated mild-to-moderate CV; during 3 of these, patients had bilateral Licox monitors yielding 18 data points for statistical analysis. The Licox monitor showed improved PbO<sub>2</sub> after spasmolysis in 15 instances (83%) in this group. During 3 instances, the mean postspasmolytic PbO<sub>2</sub> was slightly lower than the prespasmolytic mean PbO<sub>2</sub>, but this was not statistically significant. During 1 cerebral angiography showing mild-to-moderate CV, Licox monitor malfunction was noticed due to unstable readings and was excluded from the data analysis.

Mean PbO<sub>2</sub> in the prespasmolytic and postspasmolytic period was 35.2 ± 3.1 mm Hg (mean ± SE) and 40.3 ± 3.1 mm Hg (mean ± SE), respectively (Table and Fig 3A). The paired difference between groups by using the 2-tailed paired-samples *t* test was 5.0 ± 1.4 (mean ± SE). This improvement in PbO<sub>2</sub> after spasmolysis was statistically significant ( $P = .002$ ) (Table and Fig 3A). Mean CPP, ICP, SaO<sub>2</sub>, and FiO<sub>2</sub> did

not have any statistically significant differences in prespasmolytic and postspasmolytic periods (Table).

### Moderate-to-Severe Vasospasm Group

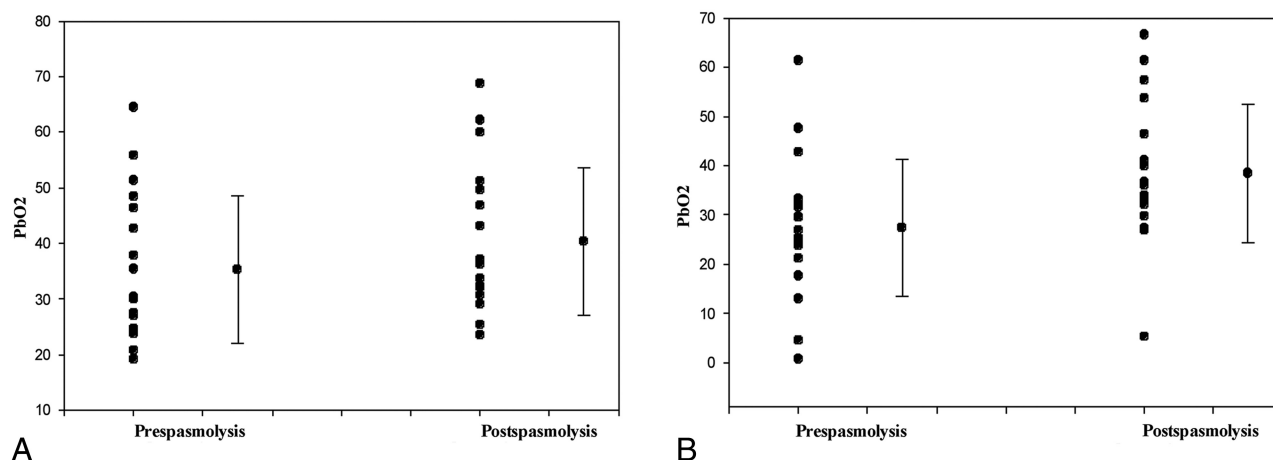
Fourteen cerebral angiograms demonstrated moderate-to-severe CV. During 5 of these angiographies, 2 patients had bilateral Licox monitors yielding 19 data points for statistical analysis. The Licox monitor showed improved PbO<sub>2</sub> after spasmolysis during all 19 instances (100%) in this group (Fig 3B). In this group also, the Licox monitor malfunction was noticed during 1 cerebral angiography and hence was excluded from the data analysis.

The mean PbO<sub>2</sub> in the prespasmolytic and postspasmolytic period was 27.3 ± 3.1 mm Hg (mean ± SE) and 38.4 ± 3.2 mm Hg (mean ± SE), respectively (Table and Fig 3B). The paired difference between groups by using the 2-tailed paired-samples *t* test was 11.0 ± 2.0 (mean ± SE). This improvement in PbO<sub>2</sub> after spasmolysis was statistically significant ( $P = .000$ ) (Table and Fig 3B). The mean CPP, ICP, SaO<sub>2</sub>, and FiO<sub>2</sub> did not show any statistically significant differences in the pre- and postspasmolysis period (Table).

### Spasmolytic Therapy

Of the 31 angiographies, balloon angioplasty had to be used only once for pharmacologically resistant vasospasm in the supraclinoid ICA in a patient with severe CV. Verapamil alone was used to treat vasospasm during 25 angiographies and was supplemented with nitroglycerine during 3. Nitroglycerine was used as the only vasodilating agent in 3 patients. The improvement in PbO<sub>2</sub> after spasmolytic therapy was found to be sustained from 8 hours in 1 patient with severe CV requiring twice daily spasmolysis to an indefinite period in





**Fig 3.** Point plot and column means graph displaying the PbO<sub>2</sub> before and after spasmolysis in the mild-to-moderate vasospasm group (A) and moderate-to-severe vasospasm group (B). PbO<sub>2</sub> values during the different cerebral angiographies are plotted as points along the y-axis with the mean and SD next to the point plot for both groups. Statistical significance ( $P < .05$ ) was attained between pre- and posttreatment in both groups.

another whose CV had improved after 1 treatment and did not necessitate repeat treatment.

### Discussion

Currently, there are no physiologic parameters in the interventionalist's armamentarium to define adequate reperfusion after spasmolytic therapy in patients with SAH. The Licox intraparenchymal brain tissue oxygen monitor is a novel adjunct to spasmolytic therapy, allowing continuous real-time assessment of reperfusion during spasmolysis in the interventional suite. In this study, improvement in PbO<sub>2</sub> recorded with the Licox monitor strongly correlated with the resolution of CV on angiography. Until now, determination of appropriate spasmolytic therapy in the angiography suite was usually subjective based on the angiographer's interpretation of the images, without any objective physiologic parameters to define an end point for adequate reperfusion. Even though arterial diameter can be used to objectify the severity of CV, there is no standardized measurement of arterial stenosis to define mild, moderate, or severe CV. We categorized CV into mild-to-moderate (<50% large-vessel arterial narrowing) and moderate-to-severe (≥50% large-vessel arterial narrowing). Additionally, there is no method to determine whether adequate restoration of brain oxygenation has been established on the basis of imaging studies alone, particularly in the setting of distal CV. The interventionalist is frequently left to interpret blood flow by timing the transition time from the arterial to venous phases.

Monitoring brain oxygenation provides the interventionalist with a novel technique to objectify the adequacy of reperfusion and to determine whether the CV was successfully treated or whether further intervention is needed. Some have reported that both spasmolysis with papaverine and oral nimodipine doses reduced PbO<sub>2</sub>.<sup>4–6</sup> These findings, however, are likely secondary to reduced CPP in response to these vasodilating agents. In our study however, the mean PbO<sub>2</sub> improved after spasmolysis in both mild-to-moderate and moderate-to-severe groups. Although the improvement in PbO<sub>2</sub> was found to be statistically significant in both groups, the effect was more pronounced in the moderate-to-severe group. This improvement in PbO<sub>2</sub> correlated with the resolution of

angiographic vasospasm. In the moderate-to-severe group, PbO<sub>2</sub> readings in the postspasmolytic period showed improvement during all instances. In the mild-to-moderate group, there were 3 instances in which postspasmolytic PbO<sub>2</sub> readings were slightly lower than the prespasmolytic readings. In these 3 instances, the difference in pre- and postspasmolytic PbO<sub>2</sub> was small (mean difference ≈ 2 mm Hg) and not statistically significant ( $P > .05$ ). The PbO<sub>2</sub> was already >25 mm Hg in the prespasmolytic period in all 3 instances, which is within the normal range based on our knowledge from the literature on brain tissue oxygen monitoring in patients with traumatic brain injury.<sup>7</sup> Thus, we believe that their PbO<sub>2</sub> did not change significantly after the interventional cerebral angiogram.

During 2 cerebral angiographies, 1 each in the mild-to-moderate and moderate-to-severe groups, the Licox monitor malfunction was noticed due to unstable readings; these monitors were replaced. The data from these 2 cerebral angiograms were excluded from the final data analysis. Our data also showed a strong trend in the PbO<sub>2</sub> and the severity of CV on angiography. PbO<sub>2</sub> was lower in the moderate-to-severe group than in the mild-to-moderate group in the prespasmolytic period ( $P = .06$ ).

Limitations of using an invasive PbO<sub>2</sub> probe such as the Licox include a small volume of tissue (within a 7.1 mm<sup>2</sup> area of the catheter tip) that can be monitored with a single probe.<sup>8</sup> This places severe limitations on the volume of brain that can be monitored for CV, which can be a diffuse cerebral entity. Also, positioning of the Licox tip remains controversial with regard to the depth and location of placement. We routinely place the Licox through a burr-hole at the Kocher point (11 cm posterior to the glabella, 2–3 cm lateral to midline, in the mid-pupillary line) and insert the cable tip to approximately 2 cm from the surface and confirm positioning with a CT of the head. The Kocher point serendipitously is located near the anterior ACA-MCA watershed territory and should allow detection of CV in both the distal ACA and MCA territories (Fig 1A). Patients with severe SAH or demonstrable bilateral CV can receive bilateral Licox monitors so that both cerebral hemispheres can be monitored for CV.

Developing techniques to monitor PbO<sub>2</sub> over larger vol-

umes of brain tissue is needed to improve the utility of this technique in the endovascular suite. Thermal diffusion microprobes have been implanted to record regional cerebral blood flow changes, but these too have the disadvantage of being invasive and indirectly measure flow and oxygenation, making interpretation difficult and dependent on external factors that are difficult to control.<sup>6</sup> Even more beneficial would be technologic advancements in noninvasive brain tissue oxygen monitoring that would allow simultaneous recordings over the entire cortical surface. The advantage of the Licox over currently available noninvasive brain oxygen monitoring modalities, such as transdermal infrared technology, is its accuracy and fewer external variables that would potentially interfere with O<sub>2</sub> detection.<sup>9–17</sup> Contemporary noninvasive monitoring systems have failed to accurately monitor brain O<sub>2</sub> levels because of external variables such as ambient light and poor skin-to-electrode contact, both of which interfere with accurate monitoring.<sup>18,19</sup>

This study does have inherent limitations including its retrospective nature and small sample size. A multicenter prospectively randomized controlled trial with a larger number of patients would improve our ability to determine the utility of brain tissue oxygen monitoring as an objective physiologic parameter for determining adequate cerebral reperfusion after intra-arterial spasmolytic therapy in the endovascular suite.

## Conclusions

We have demonstrated a trend between PbO<sub>2</sub> levels and the severity of CV in patients with SAH. Our data suggest that the PbO<sub>2</sub> level for mild-to-moderate CV is approximately 35 ± 3 mm Hg, and for moderate-to-severe CV, 27 ± 3 mm Hg. Resolution of CV on angiography strongly correlated with increased PbO<sub>2</sub> levels, and the differences between pre- and posttreatment PbO<sub>2</sub> were statistically significant. PbO<sub>2</sub> is a useful physiologic parameter for determining CV in the ICU and a useful tool for determining adequate restoration of cerebral blood flow after spasmolytic therapy.

## Acknowledgments

We acknowledge the work of the nursing staff in the Neurosciences Intensive Care Unit at SUNY Upstate Medical University Hospital who cared for these critically ill patients and were responsible for the transportation of the equipment used during this study. We also acknowledge the work of Mariam Donohue, PhD, student at SUNY Upstate Medical University, for critically appraising the manuscript.

Disclosures: Eric Deshaies—UNRELATED: Consultancy: ev3, Integra, Comments: physician consultant for both companies. No consultant services related to this manuscript. I was not a consultant during preparation of the initial manuscript when data were reviewed or when the manuscript was initially submitted.

## References

1. Fisher CM, Kistler JP, Davis JM. Relation of cerebral vasospasm to subarachnoid hemorrhage visualized by computerized tomographic scanning. *Neurosurgery* 1980;6:1–9
2. Deshaies EM, Boulos AS, Drazin D, et al. Evidence-based pharmacotherapy for cerebral vasospasm. *Neurol Res* 2009;31:615–20
3. Deshaies EM, Boulos AS, Popp AJ. Peri-operative medical management of cerebral vasospasm. *Neurol Res* 2009;31:644–50
4. Stiefel MF, Spiotta AM, Udoetuk JD, et al. Intra-arterial papaverine used to treat cerebral vasospasm reduces brain oxygen. *Neurocrit Care* 2006;4:113–18
5. Stiefel MF, Heuer GG, Abrahams JM, et al. The effect of nimodipine on cerebral oxygenation in patients with poor-grade subarachnoid hemorrhage. *J Neurosurg* 2004;101:594–99
6. Vajkoczy P, Horn P, Bauhuf C, et al. Effect of intra-arterial papaverine on regional cerebral blood flow in hemodynamically relevant cerebral vasospasm. *Stroke* 2001;32:498–505
7. Bohman LE, Heuer GG, Macyszyn L, et al. Medical management of compromised brain oxygen in patients with severe traumatic brain injury. *Neurocrit Care* 2011;14:361–69
8. Dings J, Meixensberger J, Jager A, et al. Clinical experience with 118 brain tissue oxygen partial pressure catheter probes. *Neurosurgery* 1998;43:1082–95
9. Doll H, Davies N, Douglas SL, et al. One sensor fits all—a new approach in monitoring brain physiology. *Adv Exp Med Biol* 2009;645:175–80
10. Stewart C, Haitsma I, Zador Z, et al. The new Licox combined brain tissue oxygen and brain temperature monitor: assessment of in vitro accuracy and clinical experience in severe traumatic brain injury. *Neurosurgery* 2008;63:1159–64, discussion 1164–65
11. Dings J, Meixensberger J, Roosen K. Brain tissue pO<sub>2</sub>-monitoring: catheter stability and complications. *Neurol Res* 1997;19:241–45
12. Rothoerl RD, Faltermeier R, Burger R, et al. Dynamic correlation between tissue PO<sub>2</sub> and near infrared spectroscopy. *Acta Neurochir Suppl* 2002;81:311–13
13. Alessandri B, Hoelper BM, Behr R, et al. Accuracy and stability of temperature probes for intracranial application. *J Neurosci Methods* 2004;139:161–65
14. Hoelper BM, Alessandri B, Heimann A, et al. Brain oxygen monitoring: in-vitro accuracy, long-term drift and response-time of Licox- and Neurotrend sensors. *Acta Neurochir (Wien)* 2005;147:767–74, discussion 774. Epub 2005 May 13
15. Wilensky EM, Bloom S, Leichter D, et al. Brain tissue oxygen practice guidelines using the LICOX CMP monitoring system. *J Neurosci Nurs* 2005;37:278–88
16. Duchs R, Foitzik T. Possible pitfalls in the interpretation of microcirculatory measurements: a comparative study using intravital microscopy, spectroscopy and polarographic pO<sub>2</sub> measurements. *Eur Surg Res* 2008;40:47–54. Epub 2007 Oct 5
17. Haitsma I, Rosenthal G, Morabito D, et al. In vitro comparison of two generations of Licox and Neurotrend catheters. *Acta Neurochir Suppl* 2008;102:197–202
18. Bernard SL, An D, Glenny RW. Validation of the Nonin 8600V Pulse Oximeter for heart rate and oxygen saturation measurements in rats. *Contemp Top Lab Anim Sci* 2004;43:43–45
19. Highton D, Elwell C, Smith M. Noninvasive cerebral oximetry: is there light at the end of the tunnel? *Curr Opin Anaesthesiol* 2010;23:576–81