

# Generic Contrast Agents

Our portfolio is growing to serve you better. Now you have a choice.



[VIEW CATALOG](#)

# AJNR

## **Late Evaluation of Silent Cerebral Ischemia Detected by Diffusion-Weighted MR Imaging after Filter-Protected Carotid Artery Stenting**

G. Palombo, V. Faraglia, N. Stella, E. Giugni, A. Bozzao and  
M. Taurino

This information is current as  
of May 31, 2025.

*AJNR Am J Neuroradiol* 2008, 29 (7) 1340-1343

doi: <https://doi.org/10.3174/ajnr.A1102>

<http://www.ajnr.org/content/29/7/1340>

## ORIGINAL RESEARCH

G. Palombo  
V. Faraglia  
N. Stella  
E. Giugni  
A. Bozzao  
M. Taurino

# Late Evaluation of Silent Cerebral Ischemia Detected by Diffusion-Weighted MR Imaging after Filter-Protected Carotid Artery Stenting

**BACKGROUND AND PURPOSE:** Postoperative diffusion-weighted MR imaging (DWI) often discloses new lesions after carotid artery stent placement (CAS), most of them asymptomatic. Our aim was to investigate the fate of these silent ischemic lesions.

**MATERIALS AND METHODS:** We prospectively studied 110 patients undergoing protected transfemoral CAS, 98 of whom underwent DWI before and after the intervention. Patients in whom DWI disclosed silent postoperative lesions also had delayed MR imaging. Preoperative, postoperative, and delayed scans were compared.

**RESULTS:** Of the 92 patients without postoperative symptoms, DWI disclosed 33 new silent ischemic lesions in 14 patients (15.2%), 13 of whom (30 lesions) underwent delayed MR imaging after a mean follow-up of 6.2 months. In 8 of these 13 patients (61%), MR imaging disclosed 12 persistent lesions (12/30, 40%). The reversibility rate depended significantly on the location (cortical versus subcortical) and size (0–5 versus 5–10 mm) of the lesions ( $P < .05$  by  $\chi^2$  test).

**CONCLUSIONS:** Because many silent ischemic lesions seen on postoperative DWI after CAS reverse within months, the extent of permanent CAS-related cerebral damage may be overestimated.

Carotid artery stent placement (CAS) is today considered in many centers a valid alternative to carotid surgery for treating carotid artery stenosis because it achieves stroke and death rates matching those after surgery.<sup>1,2</sup>

Despite widespread use of cerebral protection systems in patients undergoing endovascular carotid interventions,<sup>3,4</sup> diffusion-weighted MR imaging (DWI) of the brain, currently the most effective tool for diagnosing acute cerebral ischemia,<sup>5,6</sup> detects a high incidence of asymptomatic ischemic lesions after CAS, ranging from 21% to 54% for unprotected procedures<sup>7,8</sup> and from 21% to 40% for protected procedures.<sup>9–13</sup> Few studies have described the late outcome of early postoperative DWI lesions.<sup>14–16</sup> Whether these silent ischemic lesions cause permanent brain damage with cognitive impairment or merely transient ischemia without sequelae remains unclear.

In this prospective study, to investigate the extent of permanent cerebral ischemic damage in patients undergoing protected CAS, we used postoperative DWI and delayed MR imaging to assess the outcome (patient and lesion reversibility rates) of asymptomatic ischemic lesions after CAS and studied factors potentially influencing reversibility.

## Materials and Methods

We prospectively included in our study 110 patients (78 men, 32 women; median age, 72.6 years) who underwent CAS at our institution from October 2004 to July 2006. Except 4 patients who had a restenosis from a previous endarterectomy, all patients had atherosclerotic stenosis of the internal carotid artery (ICA). The severity of

the stenosis was evaluated with duplex ultrasonography, by using morphologic and velocimetric criteria. The plaque structure was defined according to the classification of Geroulakos et al<sup>17</sup>: type 1, uniformly echolucent; type 2, predominantly echolucent with <50% of echogenic areas; type 3, predominantly echogenic with <50% of echolucent areas; type 4, uniformly echogenic; and type 5, not classifiable, owing to heavy calcification producing acoustic shadow.

In all patients, a gadolinium-enhanced MR angiographic scan of the aortic arch and supra-aortic vessels was obtained before treatment to confirm stenosis and to assess the anatomic features. Symptomatic patients with at least 70% carotid stenosis were included after transient ischemic attack (retinal or hemispheric) or nondisabling stroke (modified Rankin scale score, <3) experienced within 6 months before the intervention. Asymptomatic patients (no ipsilateral neurologic symptoms in the previous 6 months) were included if they had at least 70% carotid stenosis. Exclusion criteria were standard contraindications to MR imaging, presence of a subtotal stenosis or endoluminal thrombus, and excessive vessel tortuosity precluding endovascular access to the carotid lesion or filter deployment. The baseline characteristics of our patients are listed in Table 1.

All patients were scheduled for CAS because of comorbidities, old age, or patient's preference; and all procedures were performed by a vascular surgeon with long experience in endovascular procedures. Every patient received 300 mg of clopidogrel orally 1–3 hours before the procedure and 5000 IU of intravenous heparin after sheath placement. During prolonged procedures, if an activated clotting time of <250 seconds was found, the patient received an additional 2500 IU of heparin. After treatment, patients received daily medication with 100 mg of aspirin and 75 mg of clopidogrel for 6 months. Thereafter, clopidogrel was discontinued, whereas aspirin was maintained indefinitely.

In all patients, CAS was performed by the percutaneous femoral approach. Because patients underwent preoperative aortic arch assessment with gadolinium-enhanced MR angiography, none of them had diagnostic intraoperative angiography of the cerebral vessels. For cerebral protection, we routinely used an FiterWire EZ (Boston Scientific, Nanterre, France) deployed in the distal ICA (100 patients).

Received December 27, 2007; accepted after revision February 21, 2008.

From the Departments of Vascular Surgery (G.P., V.F., N.S., M.T.) and Neuroradiology (E.G., A.B.), Ospedale Sant'Andrea, "La Sapienza" University of Rome (Second Medical School), Rome, Italy.

Please address correspondence to Giovanni Palombo, MD, Department of Vascular Surgery, Ospedale Sant'Andrea, Via di Grottarossa 1035, 00189 Rome, Italy; e-mail: giovanni.palombo@tiscali.it

DOI 10.3174/ajnr.A1102

**Table 1: Baseline characteristics of the 110 patients studied**

Characteristics	No. (%)
Patients	110
Mean age (range) (years)	72.6 (56–86)
Men	78 (71)
Women	32 (29)
Ipsilateral ICA stenosis	
70%–90%	106 (96.3)
>90%	4 (3.7)
Plaque structure	
Type 5	12 (11)
Types 3 and 4	72 (65)
Types 1 and 2	26 (24)
Contralateral ICA stenosis	
0%–50%	68 (62)
50%–69%	24 (22)
70%–99%	12 (11)
Occlusion	6 (5)
Presenting symptoms	
TIA	24 (22)
Stroke	6 (5)
Asymptomatic	80 (73)
Vascular risk factors	
Chronic renal failure	5 (4.5)
Hypertension	92 (84)
Cigarette smoking	49 (45)
Diabetes	45 (41)
Hyperlipidemia	60 (55)
Chronic obstructive pulmonary disease	8 (7)
Coronary artery disease	36 (33)
Peripheral vascular disease	17 (15)

**Note:**—TIA indicates transient ischemic attack; ICA, internal carotid artery.

When the distal ICA measured >6 mm in diameter, an AngioGuard filter (Cordis, Miami Lakes, Fla) was preferred (6 patients). In stenoses of >90% (4 patients), we used the Spider monorail filter (ev3, Irvine, Calif), because it has a low crossing profile. Of the 110 patients, 6 underwent predilation with a 3 × 20 mm balloon catheter. In all patients, a self-expandable stent (carotid Wallstent, Boston Scientific; Precise carotid stent, Cordis) was delivered over the carotid bifurcation and then dilated with an appropriate balloon. Wallstents were preferred in patients with a straight course of the carotid artery (88 patients), whereas the more flexible Precise nitinol stent was used in tortuous bifurcations (22 patients).

MR imaging of the brain was performed before and after treatment with a 1.5T whole-body system (Magnetom Sonata; Siemens, Erlangen, Germany) equipped with a head coil. The cerebral MR imaging studies included axial T2-weighted fluid-attenuated inversion recovery (FLAIR) and DWI sequences. FLAIR sequences had the following parameters: TR, 8000 ms; TE, 100 ms; TI, 2200 ms; FOV, 240 mm; thickness, 3 mm; turbo factor, 14; NEX, 2, intersection gap, 0.3 mm; matrix, 256 × 256 mm; and acquisition time, 1.40 minutes. The DWI sequences were obtained in 3 orthogonal planes with 3 levels of diffusion sensitization (b-values = 0, 500, and 1000 s/mm<sup>2</sup>) by using the following parameters: section thickness, 5 mm; TR, 3000 ms; TE, 84 ms; intersection gap, 0.3 mm; matrix, 256 × 256 mm; and acquisition time, 1.40 minutes. MR imaging was performed within 3 days after CAS. When the MR imaging scanner was not available within 3 days, the patient was excluded. In patients with silent postoperative DWI lesions, an MR imaging follow-up scan was acquired by using a FLAIR sequence with the foregoing parameters.

The primary outcome variable was the “patient reversibility rate,” defined as the number of patients with at least 1 postoperative lesion

**Table 2: Location of postoperative DWI ischemic lesions and after a mean 6.2-month follow-up**

Location	Postoperative DWI	MR Imaging Follow-Up			P*
		Persisted	Disappeared	Lost	
Cortical	19	4 (25%)	12 (75%)	3	.02
Subcortical	10	7 (70%)	3 (30%)	0	
Deep white matter	3	1 (33%)	2 (66%)	0	
Basal ganglia	1	0	1 (100%)	0	
Total	33	12 (40%)	18 (60%)	3	

\*P value by  $\chi^2$  test.

who had no lesions at follow-up, and the “lesion reversibility rate,” defined as the percentage of postoperative lesions that disappeared on MR imaging during follow-up. To evaluate outcome, 2 experienced neuroradiologists who were not involved in the carotid procedures compared the follow-up and postprocedural images with those acquired before the intervention. The number, location, and diameter of new ischemic lesions were recorded. Disagreements were settled by consensus. Ipsilateral lesions were those on the side of the treated carotid artery; contralateral lesions included those located in the vascular territory of the untreated carotid artery or vertebrobasilar arteries. According to their anatomic distribution, lesions were classified as cortical, subcortical (just below the cortex), and deep white matter (when located in the centrum semiovale). As possible factors influencing the lesion and patient reversibility rates, we evaluated location, size, MR imaging–documented microinfarctual brain, age ≥80 years, sonographic evidence of echolucent plaque, and patients’ clinical presentations (symptomatic or asymptomatic).

All patients underwent neurologic examination before and 24 hours after the procedure. New cerebral deficits persisting >24 hours were recorded as stroke, the severity of which was graded according to the modified Rankin scale. Major strokes exceed 3 on the Rankin scale, whereas minor strokes do not.

A  $\chi^2$  test was used to calculate between-group differences in data for factors influencing the lesion and patient reversibility rates. A P value < .05 indicated statistical significance.

Written informed consent was obtained from all patients, and the procedures were approved by the hospital ethics committee.

## Results

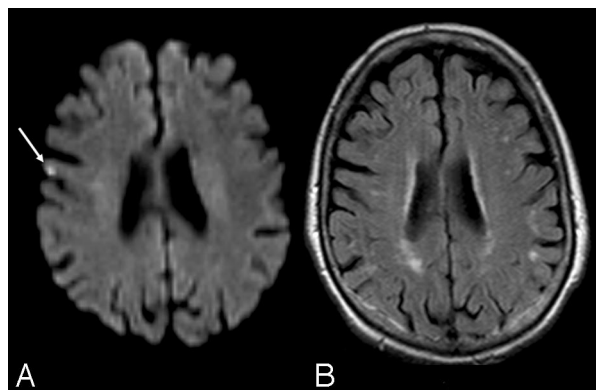
In all patients, intraoperative angiography showed a resolution of the stenosis. Of the 110 patients, 6 (5.4%) had postoperative ischemic symptoms: 3 (2.7%) had minor strokes and 3, transient neurologic events. None of the operative procedures led to death or myocardial infarction.

Of the 110 patients who underwent CAS, 98 patients (89.1%) underwent preoperative and postoperative DWI of the brain. Of these 98 patients, 92 were asymptomatic and 6 were symptomatic. In all 6 symptomatic patients, postoperative DWI detected new ischemic lesions. In 14 of the 92 asymptomatic patients (15.2%), DWI disclosed 33 new lesions (range, 1–7 lesions; mean, 2.2 lesions per patient). Of these 33 new DWI lesions, 26 (79%) involved the vascular territory supplied by the treated ICA, whereas the other 7 lesions (21%) were located in other territories (contralateral lesions). Of the 33 lesions, 19 (58%) were anatomically situated in the cortex, 10 (30%) were subcortical, 3 (9%) lay in the deep white matter, and 1, in the putamen (3%) (Table 2). Twelve of the 19 cortical lesions (63%) and 4 of the 10 subcortical lesions (40%) were <5 mm in diameter (P = not significant). Overall, 19

**Table 3: Size of postoperative DWI and follow-up MR imaging ischemic lesions**

Size	Postoperative DWI	Follow-Up MR Imaging			<i>P</i> *
		Persisted	Disappeared	Lost	
0–5 mm	19	3 (17%)	14 (83%)	2	.004
5–10 mm	14	9 (69%)	4 (31%)	1	
Total	33	12	18	3	

\**P* value by  $\chi^2$  test.



**Fig 1.** A, Ischemic lesion (arrow) seen on postoperative DWI. B, Delayed MR image in the same patient documents its disappearance.

**Table 4: Analysis of possible factors influencing patient reversibility rate**

Factors	No. Patients with DWI Lesions	No. Patients with Persistent MR Imaging Lesions	<i>P</i> *
Preoperative microinfarctual brain	6	3 (50%)	.3
Normal brain	1	0	.1
Age $\geq 80$ years	3	3 (100%)	
Age $< 80$ years	10	5 (50%)	
Types 1 and 2 carotid plaque	1	0	.2
Types 3–5 carotid plaque	12	8 (67%)	.9
Asymptomatic	8	5 (62%)	
Symptomatic	5	3 (60%)	

\**P* values by  $\chi^2$  test.

lesions (58%) were sized  $< 5$  mm and 14 (42%) were  $> 5$  mm. None of the lesions exceeded 10 mm in diameter (Table 3). No significant relationship was found in our series between the development of new ischemic lesions and the type of stent or filter used.

After a mean follow-up of 6.2 months (range, 4–9 months), 13 of the 14 patients with silent postoperative lesions on DWI underwent a late MR imaging examination. In 8 of these 13 patients (61%), late MR imaging studies detected a brain infarction in the same site as the postoperative DWI lesion, yielding a patient reversibility rate of 39%. Of the 30 DWI lesions followed up with time, only 12 persisted, accounting for a lesion reversibility rate of 60% (Fig 1). Late MR imaging detected no lesions in new brain sites. None of the factors investigated (presence of microinfarctual brain, age  $\geq 80$  years, presence of echolucent plaque, or patients' preoperative presentations) significantly influenced the patient reversibility rate (Table 4).

## Discussion

In this prospective study, designed to investigate the outcome of asymptomatic ischemic lesions detected by DWI after filter-protected CAS, we found 33 new ischemic lesions in 14 patients, corresponding to an incidence rate of 15.2%. This result compares with the rate previously reported by Piñero et al<sup>12</sup> and improves the higher rates reported by others,<sup>10,18</sup> even if our preoperative and intraoperative antiplatelet and anticoagulation regimen differed slightly from that used in these other series. Of the 30 ischemic lesions detected by early postoperative DWI and followed over time, 18 lesions regressed, yielding a lesion reversibility rate of 60%. This rate partly confirms the few similar previous studies. Whereas some investigators reported a 50% reversibility of postoperative DWI lesions after carotid endarterectomy,<sup>14</sup> others reported 81% after protected CAS<sup>15</sup> and even 97% after unprotected CAS.<sup>16</sup>

A possible reason why we found a lower reversibility rate is that we used a more sensitive MR imaging technique (3-mm sections instead of 5 mm). Another explanation, given our finding that lesion reversibility depends significantly on size, is that our patients had relatively few small lesions (59%  $< 5$  mm in diameter versus 81% in study by Hauth et al<sup>16</sup>). Even though prolonged antiplatelet therapy with clopidogrel may prevent thrombus formation on embolic material, thus causing ischemic lesions to disappear, this mechanism would be unlikely to explain why our reversibility rates differed from those of Hauth et al, given that in both studies patients discontinued clopidogrel at 6 months. Whatever the explanation, overall, these findings imply that permanent cerebral ischemic damage after protected CAS is less extensive than postoperative neuroimaging studies suggest.

When we analyzed factors that might influence lesion and patient reversibility—location, size, MR imaging documented microinfarctual brain, age  $\geq 80$  years, sonographic evidence of echolucent plaque, and clinical preoperative presentation—the only factors clearly associated with persistence were location and size (Tables 2–4). Our study suggests that the silent DWI ischemic lesions most likely to persist with time are those located in a subcortical site and those  $> 5$  mm. Location and size are, nevertheless, closely related because, as our study shows, subcortical lesions are also frequently larger than cortical ones. The lower reversibility of subcortical lesions could, therefore, depend on both their larger size and the known poorer subcortical vascularization.

Even though assessing cognitive decline was outside the scope of this study, our finding that many silent postoperative ischemic lesions merely caused transient ischemia without sequelae could help to explain the controversial association of these lesions with cognitive decline.<sup>19</sup> Whereas some report neuropsychological deterioration in patients with postoperative DWI lesions after coronary artery bypass grafting,<sup>20</sup> others do not.<sup>21–23</sup> To our knowledge, no information is available on the association between cognitive decline and silent postoperative DWI lesions after protected CAS. As our study shows, definitive conclusions on this possible relationship should be drawn not from immediate postoperative assessment but from delayed evaluation of CAS-induced ischemic damage. In conclusion, although increasing data show a high incidence of postoperative brain ischemic damage after protected CAS, many of these silent ischemic lesions, particularly the smaller

and more distal ones, disappear at MR imaging follow-up. Further studies addressing the association of persistent ischemic lesions with cognitive impairment are needed to evaluate long-term results of protected carotid stent placement.

## References

- Hobson RW. Carotid artery stenting. *Surg Clin N Am* 2004;84:1281–94
- Setacci C, Chisci E, de Donato G, et al. Carotid artery stenting in a single center: are six years of experience enough to achieve the standard of care? *Eur J Vasc Endovasc Surg* 2007;34:655–62
- Burton KR, Lindsay TF. Assessment of short-term outcomes for protected carotid angioplasty with stents using recent evidence. *J Vasc Surg* 2005;42:1094–100
- Yadav JS, Wholey MH, Kuntz RE, et al. Protected carotid artery stenting versus endarterectomy in high-risk patients. *N Engl J Med* 2004;351:1493–501
- Warach S, Gaa J, Siewert B, et al. Acute human stroke studied by whole brain echo planar diffusion-weighted magnetic resonance imaging. *Ann Neurol* 1995;37:231–41
- Fiebach JB, Schellinger PD, Jansen O, et al. CT and diffusion-weighted MR imaging in randomized order: diffusion-weighted imaging results in higher accuracy and lower interrater variability in the diagnosis of hyperacute ischemic stroke. *Stroke* 2002;33:2206–10
- McDonnell CO, Fearn SJ, Baker SR, et al. Value of diffusion-weighted MRI during carotid angioplasty and stenting. *Eur J Vasc Endovasc Surg* 2006;32:46–50
- Poppert H, Wolf O, Resch M, et al. Differences in number, size and location of intracranial microembolic lesions after surgical versus endovascular treatment without protection device of carotid artery stenosis. *J Neurol* 2004;251:1198–203
- Jaeger HJ, Mathias KD, Hauth E, et al. Cerebral ischemia detected with diffusion-weighted MR imaging after stent implantation in the carotid artery. *AJNR Am J Neuroradiol* 2002;23:200–07
- du Mesnil de Rochemont R, Schneider S, Yan B, et al. Diffusion-weighted MR imaging lesions after filter-protected stenting of high-grade symptomatic carotid artery stenoses. *AJNR Am J Neuroradiol* 2006;27:1321–25
- Jaeger HJ, Mathias KD, Drescher R, et al. Diffusion-weighted MR imaging after angioplasty or angioplasty plus stenting of arteries supplying the brain. *AJNR Am J Neuroradiol* 2001;22:1251–59
- Piñero P, González A, Mayol A, et al. Silent ischemia after neuroprotected percutaneous carotid stenting: a diffusion-weighted MRI study. *AJNR Am J Neuroradiol* 2006;27:1338–45
- Hammer FD, Lacroix V, Duprez T, et al. Cerebral microembolization after protected carotid artery stenting in surgical high-risk patients: results of a 2-year prospective study. *J Vasc Surg* 2005;42:847–53
- Wolf O, Heider P, Heinz M, et al. Frequency, clinical significance and course of cerebral ischemic events after carotid endarterectomy evaluated by serial diffusion-weighted imaging. *Eur J Vasc Endovasc Surg* 2004;27:167–71
- Schlüter M, Tübler T, Steffens JC, et al. Focal ischemia of the brain after neuroprotected carotid artery stenting. *J Am Coll Cardiol* 2003;42:1007–13
- Hauth E, Jansen C, Drescher R, et al. MR and clinical follow-up of diffusion-weighted cerebral lesions after carotid artery stenting. *AJNR Am J Neuroradiol* 2005;26:2336–41
- Geroulakos G, Ramaswami G, Nicolaides A, et al. Characterisation of symptomatic and asymptomatic carotid plaques using high-resolution real time ultrasonography. *Br J Surg* 1993;80:1274–77
- Cosottini M, Michelassi MC, Puglioli M, et al. Silent cerebral ischemia detected with diffusion-weighted imaging in patients treated with protected and unprotected carotid artery stenting. *Stroke* 2005;36:2389–93
- Bendszus M, Stoll G. Silent cerebral ischaemia: hidden fingerprints of invasive medical procedures. *Lancet Neurol* 2006;5:364–72
- Restrepo L, Wityk RJ, Grega MA, et al. Diffusion- and perfusion-weighted magnetic resonance imaging of the brain before and after coronary artery bypass grafting surgery. *Stroke* 2002;33:2909–15
- Bendszus M, Reents W, Franke D, et al. Brain damage after coronary artery bypass grafting. *Arch Neurol* 2002;59:1090–05
- Knipp SC, Matatko N, Wilhelm H, et al. Evaluation of brain injury after coronary artery bypass grafting: a prospective study using neuropsychological assessment and diffusion-weighted magnetic resonance imaging. *Eur J Cardiothorac Surg* 2004;25:791–800
- Knipp SC, Matatko N, Schlamann M, et al. Small ischemic brain lesions after cardiac valve replacement detected by diffusion-weighted magnetic resonance imaging: relation to neurocognitive function. *Eur J Cardiothorac Surg* 2005;28:88–96