



Providing Choice & Value

Generic CT and MRI Contrast Agents



CONTACT REP

AJNR

This information is current as
of July 31, 2025.

**Laron Syndrome Abnormalities: Spinal
Stenosis, Os Odontoideum, Degenerative
Changes of the Atlanto-odontoid Joint, and
Small Oropharynx**

Liora Kornreich, Gadi Horev, Michael Schwarz, Boaz
Karmazyn and Zvi Laron

AJNR Am J Neuroradiol 2002, 23 (4) 625-631
<http://www.ajnr.org/content/23/4/625>

Laron Syndrome Abnormalities: Spinal Stenosis, Os Odontoideum, Degenerative Changes of the Atlanto-odontoid Joint, and Small Oropharynx

Liora Kornreich, Gadi Horev, Michael Schwarz, Boaz Karmazyn, and Zvi Laron

BACKGROUND AND PURPOSE: Patients with Laron syndrome have an inborn growth hormone resistance. We investigated abnormalities in the upper airways and cervical spine in patients with Laron syndrome.

METHODS: We prospectively examined 11 patients (one child aged 9 years and 10 adults aged 36–68 years), 10 of whom underwent MR imaging of the spine or head; nine, radiography of the cervical spine; and four, CT of C1-C2. The width of the spinal canal was evaluated visually and quantitatively and compared with reference values. The smallest diameter of the oropharynx and the thickness of the palate were measured and compared with reference values. Nine age-matched female patients referred for MR imaging for unrelated reasons served as control subjects.

RESULTS: Cervical spinal stenosis was present in seven of the adult patients, within a confidence interval of 95%. Anomaly of the dens compatible with os odontoideum was present in three patients, causing focal myelomalacia in two. The atlanto-odontoid joint showed osteoarthritic changes in six of the adult patients. The mediolateral diameter of the oropharynx was significantly smaller in the patients with Laron syndrome than in the control subjects ($P < .005$). There was no difference in the thickness of the soft palate.

CONCLUSION: Patients with Laron syndrome develop significant narrowing of the cervical spinal canal and early degenerative changes of the atlanto-odontoid joint. Laron syndrome is associated with os odontoideum causing myelomalacia. The dimensions of the oropharynx are small. Patients may be prone to neurologic morbidity and sleep disturbances. Routine MR imaging of the cervical spine is recommended in these patients.

Laron syndrome is characterized by an inability to respond normally to growth hormone of endogenous or exogenous origin (1). Most growth hormone effects are mediated by insulin-like growth factor-1 (IGF-1), which is the anabolic effector hormone of pituitary growth hormone. In Laron syndrome, a defect occurs in the growth hormone receptor gene (2, 3) or the postreceptor pathways, resulting in defects in growth hormone signal transmission and, thereby, a failure to generate IGF-1 (4). The clinical features of Laron syndrome are indistinguishable from those of untreated isolated growth hormone deficiency, but

patients with Laron syndrome have high serum levels of growth hormone and undetectable serum IGF-1 (2, 5). Most adult patients with Laron syndrome at our center were found to have sleep disturbances, and some of them were referred for imaging of the upper airway. The aim of the present study was to investigate the abnormal features of the upper airways and cervical spine, which are assumed to be due to congenital IGF-1 deficiency, in patients with Laron syndrome.

Methods

Patients

The study included 11 patients with Laron syndrome (six female and five male patients) who were prospectively examined between April 1999 and September 2001. Ten were adults aged 36–68 years; the single child (female) was 9 years old (Table 1). Diagnosis was based on marked short stature with high basal level of growth hormone and low serum levels of IGF-1. All 10 adults were untreated; the girl had been treated with IGF-1 (150–180 mg/kg/d) since she was aged 3 years.

Received April 3, 2001; accepted after revision January 2, 2002.

From the Department of Imaging (L.K., G.H., M.S., B.K.) and the Endocrinology and Diabetes Research Unit (Z.L.), Schneider Children's Medical Center of Israel, Petah Tiqva, and the Sackler Faculty of Medicine, Tel Aviv University, Israel.

Address reprint requests to Liora Kornreich, MD, Department of Imaging, Schneider Children's Medical Center of Israel, 14 Kaplan Street, Petah Tiqva 49202, Israel.

TABLE 1: Pertinent clinical data of 11 patients with Laron syndrome

Patient No.	Sex/Age (y)	Height ft, in (cm)	Weight lb (kg)
Untreated patients			
1	M/36	4, 7 (139.0)	172 (78)
2	M/41	3, 10, (115.7)	75 (34)
3	M/46	4, 10 (129.0)	88 (40)
4	M/46	4, 0 (121.0)	72 (33)
5	M/68	4, 8 (142.0)	138 (63)
6	F/39	3, 10 (118.0)	90 (41)
7	F/42	4, 3 (129.3)	134 (61)
8	F/43	3, 8 (112.0)	66 (30)
9	F/44	3, 8 (112.3)	90 (41)
10	F/48	4, 1 (123.6)	103 (47)
IGF-1-treated patient*			
11	F/9	3, 9 (115.0)	74 (34)

*Since age 3 years.

Because these examinations were part of the diagnostic evaluation of sleep apnea, institutional review board approval was not required.

Protocol

Nine patients underwent MR imaging of the cervical spine, and one (patient 5) underwent MR imaging of only the head. We used a system that operates at 0.5 T with a neck coil. Sagittal T1- and T2-weighted as well as axial T1-weighted sequences were performed. The images were reviewed by two radiologists (L.K., G.H.). The width of the spinal canal was evaluated visually and quantitatively, and the anteroposterior diameter of the vertebra was measured; measurements were taken on the sagittal images at the level of C3. The ratio of the two parameters was then calculated and compared with recently published standard values (6). Though the reference values were obtained from lateral conventional radiographs of the cervical spine, we considered them valid also for MR sagittal images because we

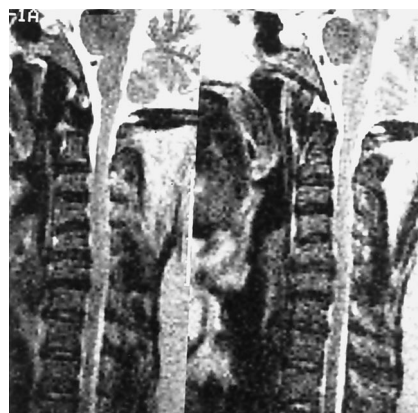


FIG 1. Patient 1. Sagittal T2-weighted images (4000/160/16 [TR/TE/NEX], 4-mm thickness) show stenosis of the cervical spine. Note bulging disks at multiple levels, causing compression of the thecal sac.

referred to only the ratio between the parameters. In addition, all abnormal findings were recorded.

Lateral conventional radiographs of the cervical spine were available in nine patients, including one (patient 4) who did not undergo MR imaging. Anteroposterior open-mouth view of the dens and flexion and extension radiographs were obtained at the discretion of the radiologist, or as feasible. Four patients also underwent CT of C1-C2.

The dimensions of the oropharynx were evaluated on the axial MR images. We measured the minimal anteroposterior and mediolateral dimensions (at retropalatal level) and compared the measurements with reference values (7). On the sagittal images, we assessed the maximal thickness of the soft palate and compared it with that of a control group of nine age-matched female patients referred for MR imaging for unrelated reasons.

Statistical Analysis

One-way analysis of variance was performed. *P* values equal to or less than .05 were considered to indicate a significant

TABLE 2: Cervical spine measurements and additional findings in nine patients with Laron syndrome

Patitent No.*	AP Canal Diameter	Vertebral Body Diameter	Ratio [†]	Normal Ratio [†]	Additional Findings
Untreated patients					
Men				0.98 ± 0.11 (n = 98) 95% CI 0.97–0.99	
1	10.0	13.5	0.74		Disk bulge C5-C6-C7, compression of SAS
2	10.0	13.0	0.77		None
3	10.5	15.0	0.70		Disk bulge C3-C4
Women				1.12 ± 0.14 (n = 94) 95% CI 1.09–1.15	
6	9.5	10.5	0.90		Disk bulge C5-C6
7	10.0	11.5	0.87		Disk bulge C3-C4, C5-C6
8	10.0	12.0	0.80		None
9	11.0	10.0	1.10		None
10	9.0	13.0	0.70		Disk bulge C3-C4, C5-C6
IGF-1-treated patient 11	13.0	10.0	1.30	1.32 ± 0.17	None

Note.—AP indicates anteroposterior; CI, confidence interval; SAS, subarachnoid space.

* Patient 4 underwent only conventional radiography, and patient 5 underwent MR imaging of only the head; thus, they are not included.

[†] Ratio between the anteroposterior diameter of the canal and the vertebral body.



FIG 2. Patient 11. Sagittal T1-weighted MR image (450/25/2, 3.2-mm thickness) of the cervical spine shows that the spinal canal is of normal width. Dens is intact. Arrows indicate the level of measurement of soft-palate thickness.

difference. Using reference values, we calculated the 95% confidence interval for the spinal ratio between the width of the canal and the vertebral body.

Results

Cervical Spine

Measurements of the cervical spine and description of the abnormal findings are given in Table 2. The most common pathologic finding was cervical spinal stenosis, present in seven of the eight examined untreated patients, with a confidence interval of 95% (Fig 1). The child receiving long-term IGF-1 treatment demonstrated normal width of the cervical spine (Fig 2).

Atlanto-odontoid Joint

These findings are shown in Table 3. Three patients demonstrated anomaly of the dens. The dens was present but showed a gap between the base and the cranial part, findings compatible with os odonto-

deum (patients 2, 3, and 4). Flexion and extension radiographs showed atlantoaxial instability. On MR images (available in patients 2 and 3), focal myelomalacia at the C1 level was visible (Fig 3). In the other adult patients (except patient 6), lateral cervical spine radiographs and anteroposterior open-mouth views of the dens revealed an intact dens, which seemed to be bulky and sclerotic. CT scans were available in three of these patients (patients 5, 7, and 9) and confirmed the presence of cortical thickening of the dens and the atlas, with narrowing of the atlantoaxial joint, compatible with degenerative changes. On MR images, compression of the subarachnoid space was seen at the same level (Fig 4). In patient 6, both conventional radiographs and MR images of the C1-C2 region revealed no abnormalities.

Oropharynx

MR images of the oropharynx were available in nine patients (Table 4). (In patient 8, MR imaging was performed with the patient under general anesthesia and was therefore not diagnostic.) The minimal mediolateral diameter of the oropharynx was significantly smaller in patients with Laron syndrome than in control subjects ($P < .005$). There was no significant difference in the anteroposterior diameter or in the thickness of the palate between the two groups (Table 4, Fig 5).

For the treated child, no reference data were available owing to her young age.

Discussion

Laron syndrome, also known as primary growth hormone resistance or insensitivity syndrome (1), was first described in 1966 and 1968 in a group of Oriental-Jewish patients (8, 9). Since then, hundreds of patients have been reported worldwide, mostly of Mediterranean or Middle Eastern origin (10, 11).

Laron syndrome is an autosomal recessive disease caused by deletions (11) or mutations in the growth hormone receptor gene (2, 3) or the postreceptor pathways (4), resulting in defects in growth hormone signal transmission and, thereby, an inability to gen-

TABLE 3: Findings at the atlanto-odontoid joint in 10 untreated patients with Laron syndrome

Patient No.	Imaging Studies	Os Odontoideum	Myelomalacia	Degenerative Changes	Compression of SAS
1	MR, LC, OM	—	—	+	+
2	MR, LC, OM, F/E	+	+	—	+
3	MR, CT, LC, OM, F/E	+	+	—	+
4	LC, OM, F/E	+	NA	—	NA
5	MR, CT, LC, OM	—	—	+	+
6	MR, LC, OM	—	—	—	—
7	MR, CT, LC	—	—	+	+
8	MR, LC	—	—	+	+
9	MR, CT	—	—	+	+
10	MR, LC, OM	—	—	+	+

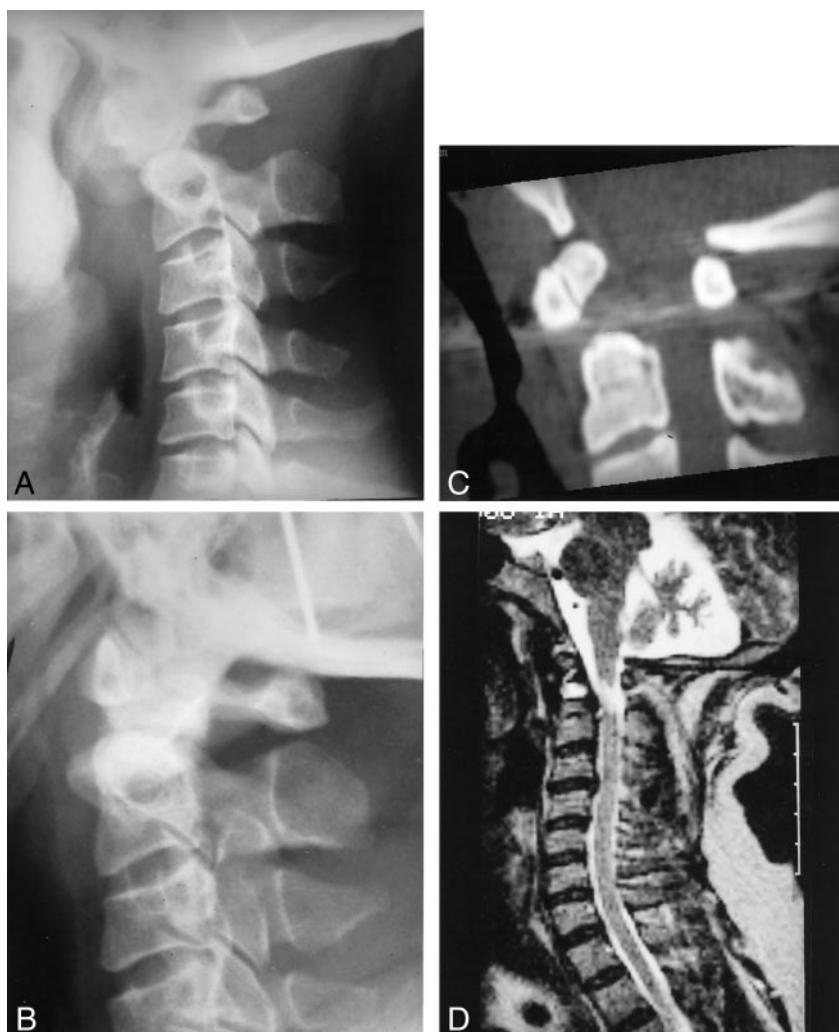
Note.—CT indicates CT at C1-C2; F/E, flexion and extension radiographs of cervical spine; LC, lateral radiograph of cervical spine; OM, open mouth dens view; +, present; —, absent; NA, not available; SAS, subarachnoid space.

FIG 3. Patient 3.

A and B, Lateral flexion (A) and extension (B) radiographs of the cervical spine. Dens is not visualized. Atlantoaxial instability is demonstrated. Note the small vertebral bodies and the narrow cervical canal.

C, Sagittal reconstruction of CT data obtained at C1-C2 shows a gap between the base of the dens and the small bone above it, compatible with os odontoideum.

D, Sagittal T2-weighted MR image (4600/160/1) shows stenosis of the cervical spine. A focus of myelomalacia is seen at the C1-C2 level. High signal intensity from the region of the disrupted dens probably represents reactive tissue.



erate IGF-1. IGF-1 is the anabolic effector hormone of pituitary growth hormone. Therefore, affected patients fail to respond to growth hormone of either endogenous or exogenous origin.

Clinically, these patients show progressive dwarfism, with final stature ranging from 3 feet 6 inches (108 cm) to 4 feet 5 inches (136 cm) in women and 3 feet 10 inches (116 cm) to 4 feet 8 inches (142 cm) in men (2, 5, 10). Acromicria, organomicria, and small genitalia and gonads are other common features (8–10). Craniofacial abnormalities include subnormal head circumference (9, 10) and underdevelopment of the facial bones (12, 13); nevertheless, head size is large relative to the short stature. All the children and many of the adults have a high-pitched voice. As adults, they become more and more obese and have hypercholesterolemia and insulin resistance (5). Though both skeletal and sexual maturation are retarded, affected individuals eventually mature and have full reproductive ability (10). With the development of biosynthetic IGF-1, treatment is now feasible (14) but has been offered to only a few children owing to its limited availability.

Only a few radiographic or imaging studies of patients with Laron syndrome have been published so far. These studies reported retarded skeletal maturation

(10, 15) or underdevelopment of the facial bones (12, 13), delayed closure of the fontanelle (9), and thin bones (5, 10, 15). Our report shows that congenital deficiency of IGF-1 due to growth hormone insensitivity causes a significant narrowing of the cervical spinal canal and is associated with anomalies of the dens, degenerative changes of the atlanto-odontoid joint, and smaller dimensions of the oropharynx.

Pituitary growth hormone and IGF-1 are the major hormones involved in postnatal longitudinal growth. Growth hormone acts on the differentiation of the prechondrocytes into early chondrocytes, which are then able to respond to IGF-1, which stimulates the division and maturation of the chondrocytes, causing growth (16). This mechanism of growth is present both in the physis of the long bones and in the proliferating cartilage on the upper and lower zones of the vertebral bodies (17). Therefore, growth hormone resistance, such as that in Laron syndrome, results in short stature and acromicria (8–10). In the patients in the current study, we noted an additional characteristic feature: cervical spinal stenosis. The spinal canal grows at the neurocentral synchondroses between the body and the arches of the vertebrae until ages 3–6 years and thereafter only by the midline posterior

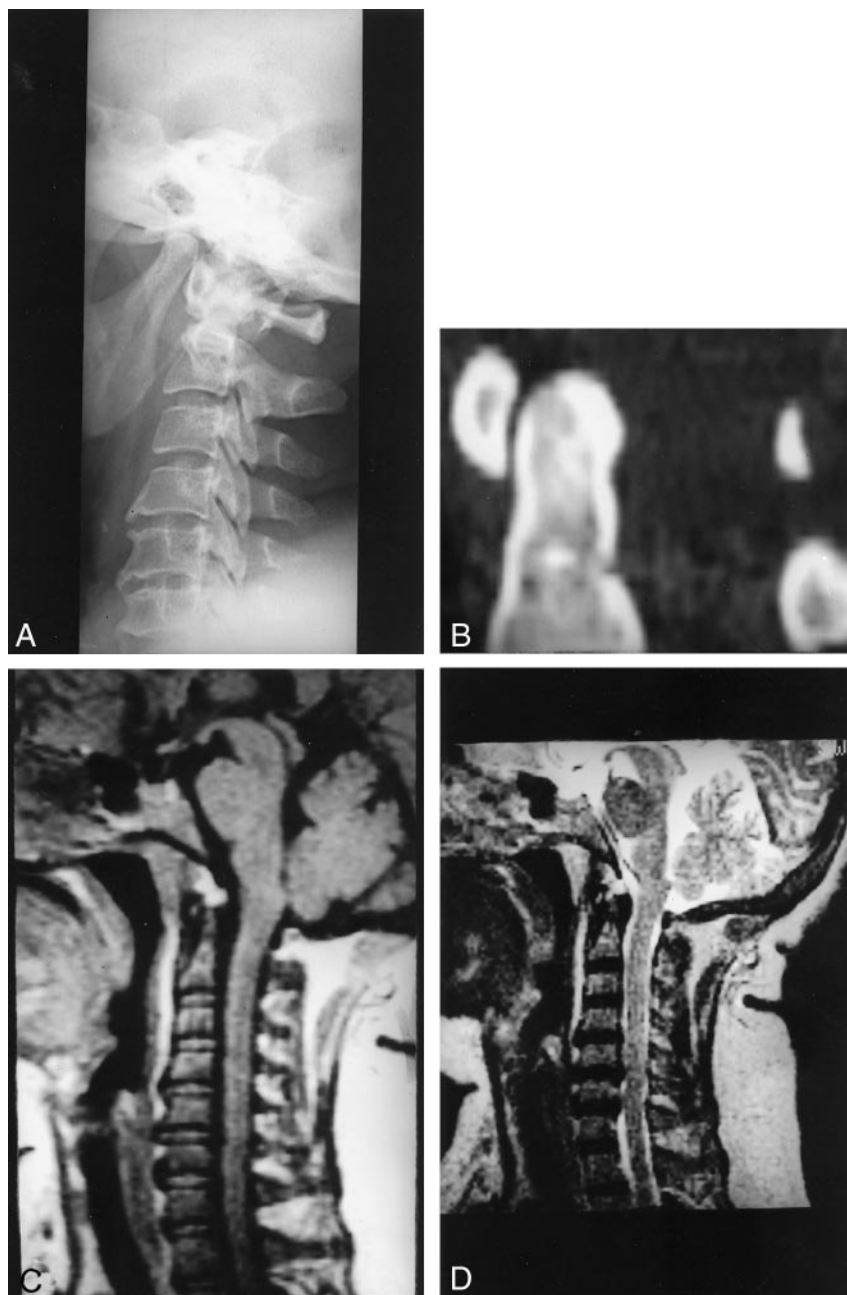


FIG 4. Patient 9.

A, Lateral radiograph of the cervical spine shows the dens, which appears thickened and sclerotic.

B, Sagittal reconstruction of CT data obtained at C1-C2 shows no malformation of the dens. Note the cortical thickening and the narrowing of the atlantoaxial joint, possibly compatible with degenerative changes.

C and D, Sagittal T1-weighted (C; 500/20/2, 4-mm thickness) and T2-weighted (D; 4000/160/1, 4-mm thickness) MR images show a thin dens. Note the mild compression of the subarachnoid space at the C1-C2 level owing to cortical thickening and sclerosis of the dens.

cartilage between the two arches until age 10 years (17). In patients with growth hormone resistance who lack IGF-1, the capacity for growth in these regions is limited, resulting in a narrow spinal canal; this was demonstrated in seven of the eight examined untreated patients with Laron syndrome. This anatomic configuration places affected patients at greater risk of neurologic deficit at the occurrence of degenerative disk disease and spondylotic changes. Indeed, in one of our patients (patient 1), disk bulge with compression of the thecal sac was evident already at age 36 years. Further studies are needed to evaluate the thoracic and lumbar spine to determine the extent of this anomaly.

The findings at the C1-C2 level are also noteworthy. In three patients, an abnormality of the dens was

detected. Aplasia or hypoplasia of the odontoid process is extremely rare and has been reported in association with a variety of congenital dysplasias (18), but not with growth hormone deficiency or insensitivity. Here, the anomaly seems more compatible with os odontoideum. The etiology of os odontoideum remains controversial: Both acquired and congenital mechanisms have been proposed (19, 20). In our patients, the combination of the spinal stenosis and atlantoaxial instability due to the disruption of the dens caused repeated pressure on the cord and focal myelomalacia (21).

In all the other adult patients (except patient 6), the CT or/and conventional radiographs disclosed sclerosis and thickening of the dens with narrowing of the atlanto-odontoid joint. Because of its function

TABLE 4: Oropharynx measurements in nine patients with Laron syndrome compared with the normal mean

Patient No.	Transverse Diameter (mm)	AP Diameter (mm)	Soft-Palate Thickness (mm)
Untreated patients			
1	11	7.0	11
2	10	4.0	8
3	7	4.0	9
5	7	4.0	20
6	10	1.2	13
7	4	4.0	10
9	7	5.0	10
10	4	6.0	13
Patient mean \pm SD	7.14 \pm 2.6	4.45 \pm 1.8	12.28 \pm 3.7
Control mean \pm SD	12.9 \pm 4.0	5.8 \pm 2.4	9.88 \pm 1.2
<i>P</i> value	<.005	NS	NS
IGF-1-treated patient	4	5	6
11			

Note.—AP indicates anteroposterior; NS, difference between patient and control means was not statistically significant; SD, standard deviation. Patient 4 did not undergo MR imaging, and in patient 8 measurements were not diagnostic.

and situation, the atlanto-odontoid joint is subject to degenerative changes. These changes are similar to those commonly observed in other synovial joints and are rarely found before age 50 years (22, 23). Only one of our patients was older than 50 years, so the high frequency of degenerative changes observed here is unusual. We suggest that in Laron syndrome the disproportion between head and body size (9, 10) subjects the atlas and dens to increased stress, resulting in thickening and sclerosis at a young age. This disproportion may also be a factor in the increased risk of overstretching of the vascular supply of the dens in the event of trauma, resulting in avascular necrosis and a high frequency of os odontoideum, as seen in our patients.

We also found that in patients with Laron syndrome, the dimensions of the oropharynx were small compared with normal standards (Table 4). Postnatal craniofacial growth appears to be a complex multifac-

torial process. Currently, all the theories of growth-control mechanisms are speculative. One of the most popular is the functional matrix hypothesis, which proposes that the craniofacial bone grows in response to the structures surrounding it. That is, the pharynx enlarges because of the functional demands for airway, breathing, and eating spaces concomitant with linear growth (24).

The small size and small quantities of food ingested in combination with the IGF-1 deficiency are probably the cause of the impaired growth of the pharynx in patients with Laron syndrome, leading also to the characteristic high-pitched voice. One of the most important clinical outcomes of impaired pharyngeal growth is a greater propensity for sleep apnea (Z. Laron, unpublished data, 2001), noted in several of our patients. Indeed, early cephalometry studies in patients with apnea who have normal stature showed that mandibular, maxillary, and anterior cranial base length are decreased (25), and the minimum airway area is significantly smaller than normal (7, 26). Interestingly, not only size but shape is affected, with the predominant narrowing in the mediolateral dimension resulting in an oval shape, with the longest axis in the anteroposterior dimension rather than the mediolateral dimension (7). All these anatomic features, including narrowing of the airways in the transverse plane (Table 4), are present in patients with growth hormone insensitivity (12, 13). Furthermore, obesity is an important factor in the development of sleep apnea (27). Adult patients with Laron syndrome are characteristically overweight, with a markedly increased fat mass (5, 10).

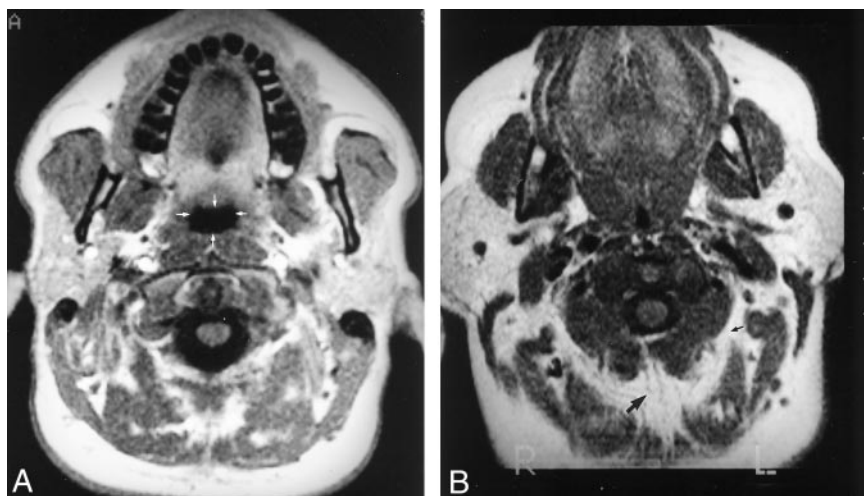
Conclusion

Untreated patients with Laron syndrome develop cervical spinal stenosis and early osteoarthritic changes of the atlantoaxial joint, and have a small oropharynx. Laron syndrome is associated with os odontoideum. These findings stress the need for IGF-1 replacement treatment in these patients early in childhood. MR screening of the cervical spine is

FIG 5. Axial T1-weighted (500/20/2, 5-mm thickness) MR images of the oropharynx.

A, MR image in control subject for comparison. Arrows indicate the anteroposterior and mediolateral diameters.

B, MR image in patient 5. Oropharynx is strikingly small. Note the abundance of adipose tissue (arrows) between the muscles.



recommended in untreated patients with either growth hormone or IGF-1 deficiency.

Acknowledgments

The authors thank Schlomo Michael and Zvi Cohen for their technical assistance, and Charlotte Sachs and Gloria Ginzach, of the Editorial Board, Rabin Medical Center, Beilinson Campus, for their assistance.

References

1. Laron Z, Blum W, Chatelain P, et al. **Classification of growth hormone insensitivity syndrome (editorial).** *J Pediatr* 1993;122:241
2. Rosenfeld RG, Rosenbloom AL, Guevara-Aguirre J. **Growth hormone (GH) insensitivity due to primary GH receptor deficiency.** *Endocr Rev* 1994;15:369–390
3. Amselem S, Sobrier ML, Dastot F, Duquesnoy O, Duriez B, Goossens M. **Molecular basis of inherent growth hormone resistance in childhood.** *Bailliere's Clin Endocrinol Metab* 1996;10:353–369
4. Laron Z, Klinger B, Eshet R, Kanety H, Karasik A, Silbergeld A. **Laron syndrome due to a post-receptor defect: response to IGF-I treatment.** *Isr J Med Sci* 1993;29:757–763
5. Laron Z. **Natural history of the classical form of primary growth hormone (GH) resistance (Laron syndrome).** *J Pediatr Endocrinol Metab* 1999;12:231–249
6. Remes VM, Heinanen MT, Kinnunen JS, Marttinen EJ. **Reference values for radiological evaluation of cervical vertebral body shape and spinal canal.** *Pediatr Radiol* 2000;30:190–195
7. Schwab RJ, Gupta KG, Geftter WB, Metzger LJ, Hoffman EA, Pack AI. **Upper airway and soft tissue anatomy in normal subjects and patients with sleep-disordered breathing.** *Am J Respir Crit Care Med* 1995;152:1673–1689
8. Laron Z, Pertzelan A, Mannheimer S. **Genetic pituitary dwarfism with high serum concentration of growth hormone: a new inborn error of metabolism?** *Isr J Med Sci* 1966;2:152–155
9. Laron Z, Pertzelan A, Karp M. **Pituitary dwarfism with high serum levels of growth hormone.** *Isr J Med Sci* 1968;4:883–894
10. Laron Z. **Laron-type dwarfism (hereditary somatomedin deficiency): a review.** In: Frick P, Von Harnack GA, Kochsiek GA, Prader A, eds. *Advances in Internal Medicine and Pediatrics*. Berlin, Heidelberg: Springer Verlag; 1984:117–150
11. Godowski PJ, Leung DW, Meacham LR, et al. **Characterization of the human growth hormone receptor gene and demonstration of a partial gene deletion in 2 patients with Laron type dwarfism.** *Proc Natl Acad Sci USA* 1989;86:8083–8087.
12. Scharf A, Laron Z. **Skull changes in pituitary dwarfism and the syndrome of familial dwarfism with high plasma immunoreactive growth hormone: a roentgenologic study.** *Horm Metab Res* 1972;4:93–97
13. Konfino R, Pertzalan A, Laron Z. **Cephalometric measurements of familial dwarfism and high plasma immunoreactive growth hormone.** *Am J Orthod* 1975;68:196–201
14. Klinger B, Laron Z. **Three-year IGF-I treatment of children with Laron syndrome.** *J Pediatr Endocrinol Metab* 1995;8:149–158
15. Vasil M, Baxova A, Kozlowski K. **Radiographic abnormalities in Laron dwarfism.** *Pediatr Radiol* 1994;24:260–262
16. Zapf J, Froesch ER. **Insulin-like growth factor I actions on somatic growth.** In: Kostyo J, Goodman J, eds. *Handbook of Physiology: A Critical, Comprehensive Presentation of Physiological Knowledge and Concepts*. vol 5. Oxford, England: Oxford University Press; 1999: 663–669
17. Silverman FN, Byrd SE, Fitz CR. **The skull, spine and central nervous system.** In: Silverman FN, Kuhn JP, eds. *Caffey's Pediatric X-ray Diagnosis*, 9th ed. St Louis, Mo: Mosby; 1993:116–125
18. Lachman RS. **The cervical spine in the skeletal dysplasias and associated disorders.** *Pediatr Radiol* 1997;27:402–408
19. Dai LY, Yuan W, Ni B, Jia LS. **Os odontoidum: etiology, diagnosis and management.** *Surg Neurol* 2000;53:106–109
20. Heick A. **Juvenile avascular necrosis of the odontoid process.** *Dan Med Bull* 1996;43:363–366
21. Watanabe M, Toyama Y, Fujimura Y. **Atlantoaxial instability in os odontoidum with myelopathy.** *Spine* 1996;21:1435–1439
22. Zapletal J, Hekster RE, Straver JS, Wilmink JT. **Atlanto-odontoid osteoarthritis: appearance and prevalence at computed tomography.** *Spine* 1995;20:49–53
23. Zapletal J, Hekster RE, Treurniet FEE, de Vlois JC, Wilmink JT. **MRI of atlanto-odontoid osteoarthritis.** *Neuroradiol* 1997;39:354–356
24. Kozak FK. **Characteristics of normal and abnormal postnatal craniofacial growth and development.** In: Cummings CW, ed. *Otolaryngology, Head and Neck Imaging*, 3rd ed. St Louis, Mo: Mosby; 1998:40–65
25. Johnson J, Braun TW. **Preoperative, intraoperative, and postoperative management of patients with obstructive sleep apnea syndrome.** *Otolaryngol Clin North Am* 1998;31:1025–1035
26. Avrahami E, Englender M. **Relation between CT axial cross-sectional area of the oropharynx and obstructive sleep apnea syndrome in adults.** *AJNR Am J Neuroradiol* 1995;16:135–140
27. Schwab RJ, Goldberg AN. **Upper airway assessment: radiographic and other imaging techniques.** *Otolaryngol Clin North Am* 1998;31:931–968