



Discover Generics

Cost-Effective CT & MRI Contrast Agents



WATCH VIDEO

AJNR

The Black Turbinate Sign, A Potential Diagnostic Pitfall: Evaluation of the Normal Enhancement Patterns of the Nasal Turbinates

Q. Han and E.J. Escott

This information is current as of June 22, 2025.

AJNR Am J Neuroradiol 2019, 40 (5) 855-861

doi: <https://doi.org/10.3174/ajnr.A6037>

<http://www.ajnr.org/content/40/5/855>

The Black Turbinate Sign, A Potential Diagnostic Pitfall: Evaluation of the Normal Enhancement Patterns of the Nasal Turbinates

Q. Han and E.J. Escott



ABSTRACT

BACKGROUND AND PURPOSE: Lack of enhancement of a nasal turbinate on MR imaging, known as the black turbinate, has been reported as a finding highly suggestive of invasive fungal rhinosinusitis in immunocompromised patients. Our purpose was to investigate the normal enhancement pattern of nasal turbinates and to determine whether a black turbinate occurs in patients without invasive fungal rhinosinusitis and, if so, to distinguish differentiating features from pathologic enhancement.

MATERIALS AND METHODS: We examined patient medical records and available MR imaging, which included most nasal turbinates in more than 1 sequence. Imaging was performed with contrast, either with or without fat saturation, in patients without invasive fungal rhinosinusitis. All MR images were evaluated for a turbinate enhancement pattern and the presence of nonenhancing areas.

RESULTS: After we applied the exclusion criteria, 75 MR images from each group, with and without fat saturation, were included. Overall, the frequency of observed nonenhancing portions of turbinates, ie, black turbinates, was 30%. Most observed black turbinates were located in the posterior portion of inferior turbinates. Tiny areas of nonenhancement within turbinates were also a common finding.

CONCLUSIONS: A black turbinate is not uncommon on MR images in immunocompetent patients who have no chance of having invasive fungal rhinosinusitis. Benign turbinate nonenhancement improves over subsequent series, has preserved thin peripheral enhancement, and often has thin internal septa. Knowledge of this normal pattern of nasal turbinate enhancement can aid in the differentiation of the benign black turbinate in immunocompetent patients from the pathologic black turbinate seen in patients with invasive fungal rhinosinusitis.

ABBREVIATIONS: BT = black turbinate; IFRS = invasive fungal rhinosinusitis; NE = nonenhancing or nonenhancement

Lack of enhancement of a nasal turbinate on MR images (the “black turbinate [BT] sign”) has been reported as highly suggestive of invasive fungal rhinosinusitis (IFRS) in immunocompromised patients (Fig 1).^{1–5} However, we have noticed nonenhancing (NE) turbinates in patients imaged for other indications, who have essentially no possibility of having IFRS. IFRS in the at-risk population is a rapidly progressive disease that frequently progresses to involve the orbit and brain. Although treated with aggressive surgical debridement, these patients usually have a poor prognosis.^{6,7} On the other hand, no treatment would be

required if nonenhancement of a nasal turbinate could be a normal finding as well. Therefore, we sought to better understand what constitutes the normal enhancement pattern of the nasal turbinates on MR imaging and attempted to define differentiating features between the normal and pathologic enhancement patterns.

MATERIALS AND METHODS

Patient Selection

This was a retrospective institutional review board–approved study involving the examination of patient medical records, such as medical history and MR images obtained without and with (gadolinium-based) intravenous contrast. Patients were enrolled in the study via a reverse chronologic order search of the PACS for appropriate MR images. We obtained 2 groups of scans. The fat-saturation group included MR images using orbit, face, neck, or skull base protocols: postcontrast T1-weighted imaging with fat saturation, from May 9, 2016, through July 31, 2016. The brain group included MR images using brain protocols: postcontrast T1-weighted imaging that did not use fat-saturation, from July 1, 2016, through July 10, 2016. Both groups of patients were enrolled

Received March 28, 2018; accepted after revision March 18, 2019.

From the Departments of Radiology (Q.H.) and Radiology and Otolaryngology-Head and Neck Surgery (E.J.E.), University of Kentucky, Lexington, Kentucky.

Paper previously presented at: Annual Meeting of the American Society of Neuroradiology and the Foundation of the ASNR Symposium, April 22–27, 2017; Long Beach, California.

Please address correspondence to Qiong Han, MD, PhD, Department of Radiology, University of Kentucky, HX 319D, 800 Rose St, Lexington, KY 40506; e-mail: qiong.han@uky.edu

Indicates article with supplemental on-line table.

<http://dx.doi.org/10.3174/ajnr.A6037>

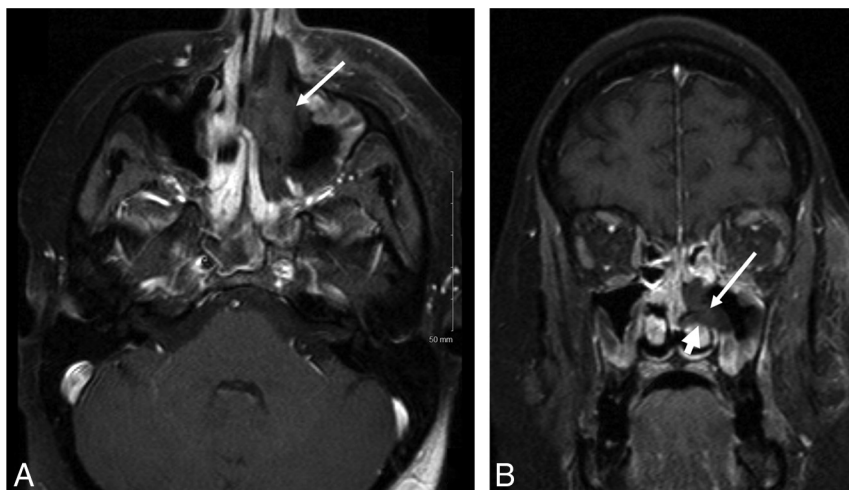


FIG 1. A 27-year-old woman with relapsed pre-B-cell acute lymphoblastic leukemia was admitted for chemotherapy. She had an MR imaging examination due to headache. Axial (A) and coronal (B) T1-weighted postcontrast images with fat saturation showed nonenhancement centered in the left middle turbinate (*long arrows*) with irregular and invasive borders extending into the left inferior turbinate (*short arrow*). The patient had tissue-proved invasive fungal rhinosinusitis and went through a series of 12 aggressive surgical debridements and eventually died.

in reverse chronologic order until the same number of patients (75) was enrolled for each group after applying the exclusion criteria. The medical records of all patients were evaluated to confirm that the enrolled patients were not likely to have IFRS.

Exclusion Criteria

Our exclusion criteria were specifically designed to ensure sufficient and reliable evaluation of the spatial and temporal enhancement pattern of the nasal turbinates. They were as follows:

- 1) Scans that did not include at least two-thirds of the concha of the inferior turbinate.
- 2) Scans with substantial postoperative or posttreatment changes in the sinonasal region.
- 3) If >1 scan was obtained at the same session, only the first scan was counted, and any additional scan was used as a further delayed series: If the brain was scanned first in a combined brain/orbit scan, the orbit scan was excluded from the fat-saturation group and only included in the brain group.
- 4) Scans with only 1 sequence routinely including the nasal turbinates, such as scans using our internal auditory canal, pituitary, or various research protocols.
- 5) Scans with significant motion or other artifacts.
- 6) Scans with any mass or destructive lesion in the sinonasal region.
- 7) Scans from outside or satellite hospitals were excluded as the index examinations but were used as prior comparison examinations.

MR Image Acquisition

MR images included in this study were obtained using various MR imaging scanners (Esprey, Aera, Symphony, Skyra and Verio; Siemens, Erlangen, Germany). Our departmental protocols for the brain, orbit, face, neck, or skull base were used. There was some variation between pediatric and adult protocols and among different scanners. Some of the key technical parameters such as the length of time to acquire each sequence are summarized in the

On-line Table and Table 1. In general, there was a 25- to 30-second delay between intravenous contrast injection and imaging in the first postcontrast sequence.

MR Image Interpretation

MR images were evaluated for the presence of areas of NE within the nasal turbinates (ie, BT). Areas of NE must be confluent areas larger than 4×5 mm to be called BTs. This criterion was specifically defined to differentiate between BT and scattered small NE foci that are commonly seen and would not likely be interpreted as potential IFRS.

Each patient with a nonenhancing turbinate was further evaluated for the location of NE within the turbinates and for whether the NE areas persisted but improved or resolved during the multiple postcontrast series. In addition, the

size symmetry of the turbinates, the overall enhancement degree, and associated signal intensity on the T2-weighted images were graded by a neuroradiologist with a Certificate of Added Qualification in neuroradiology and 24 years' experience and a senior resident radiologist-in-training. If there was any initial disagreement between the 2 observers, the final grading in each category was decided by further discussion and consensus (Tables 2–4 for the grading system and summary of the cases). A prior MR image, if available, was also thoroughly reviewed to evaluate any temporal variability of the enhancement pattern of the nasal turbinate.

Statistical Analysis

The Fisher exact test was used to determine whether there was a statistically significant difference between the sex and age composition of the 2 groups overall and the percentage of BT cases in each group.

RESULTS

One hundred sixty-two MR images from the fat-saturation group and 108 MR images from the brain group were evaluated, among which 87 MR images from the fat-saturation group and 33 MR images from the brain group were excluded per the exclusion criteria. Most of the excluded scans were orbit scans with insufficient inclusion of the nasal turbinates. A detailed breakdown of the excluded scans is shown in Fig 2. Seventy-five MR images were included in each group. The demographic information of all included scans and scans that demonstrated BT is summarized in Tables 6 and 7, respectively.

Overall, the observed rate of BT in both cohorts combined was 30% (45/150), with 21% (16/75) in the fat-saturation group and 39% (29/75) in the brain group, respectively. There was a discrepancy between the percentage of BT cases in the 2 groups, and such discrepancy was likely due to the technical differences, including the length of the scans and the greater conspicuity of enhancement on the images with fat saturation.

Table 1: Timing guideline of postcontrast sequences for 3T scanners^a

Skyra adult protocols				
Orbit	Axial T1 FS	Coronal T1 FS	Cor MPRAGE (O)	
Timing	04:10	04:42	04:14	
Face	Coronal T1 FS	Axial T1 FS	Sagittal T1 FS	
Timing	03:58	04:31	05:03	
Neck	Sagittal T1 FS	Coronal T1 FS	Axial T1 FS	
Timing	06:43	04:39	08:02	
Skull base	Axial FLAIR	Axial T1 FS	Coronal T1 FS	Sagittal FLAIR FS
Timing	01:54	06:58	06:42	02:54
Brain	Axial T1 FLAIR	Coronal T1 FLAIR	Sagittal T1 FLAIR	
Timing	01:54	02:54	02:54	
Verio adult protocols				
Orbit	Axial T1 FS	Coronal T1 FS		
Timing	03:14	01:51		
Face	Coronal T1 FS	Axial T1 FS	Sagittal T1 FS	
Timing	04:00	04:00	05:04	
Neck	Axial T1 FS	Coronal T1 FS	Axial T1 FS	
Timing	03:56	04:04	05:03	
Skull base	Axial T1 FS	Coronal T1 FS	Axial T1	Sagittal T1 FS
Timing	05:13	05:13	01:41	05:07
Brain	Axial T1	Coronal T1	Sagittal T1 FLAIR	Cor MPRAGE (O)
Timing	01:21	01:45	01:39	04:18

Note:—Cor indicates coronal; FS, fat saturation; O, optional sequence; VIBE, volume interpolated gradient echo.

^a Skyra and Verio scanners (Siemens, Erlangen, Germany). All timing is in minutes and seconds.

Table 2: Grading criteria for imaging findings^a

Category	Grades		
	1	2	3
Size symmetry	Markedly asymmetric	Mildly-to-moderately asymmetric	Symmetric
Degree of enhancement	Less than extraocular muscle	Similar to extraocular muscle	Greater than extraocular muscle
T2 signal intensity	Similar to extraocular muscle	Similar to gray matter	Similar to vitreous

^a Grading criteria for the symmetry of the size of the nasal turbinates, their overall degree of enhancement, and their signal intensity on the T2-weighted images. Scores range from 1 to 3, with scores of 1.5 or 2.5 representing the intermediate grade between 2 levels.

Table 3: Imaging findings by group^a

	Grades				
	1	1.5	2	2.5	3
FS group (16 cases)					
Size symmetry			10		6
Enhancement level	12	1	2		1
T2 signal intensity			8	1	7
Brain group (29 cases)					
Size symmetry	3		8	1	17
Enhancement level	5		24		
T2 signal intensity			10	17	2

^a Grading criteria for the symmetry of the size of the nasal turbinates, their overall degree of enhancement, and their signal intensity on the T2-weighted images. Scores range from 1 to 3, with scores of 1.5 or 2.5 representing the intermediate grade between 2 levels.

Table 4: BT site of involvement and temporal characteristics^a

Groups	Superior	Middle	Inferior	Temporal-Improving ^b	Temporal-Transient ^c
FS		6	16	5	11
Brain		8	28	13	16

^a The location of the black turbinates and the change in enhancement during multiple series are shown. Because a patient can demonstrate BT in >1 turbinate (ie, both the middle and inferior turbinates can show BT simultaneously), the total number of turbinates seen with BT is larger than the number of cases in each group.

^b BT persists across all sequences but improves gradually.

^c BT resolves on later sequences.

The NE in the BT cases was confined within the turbinate, with regular and well-defined borders. Another common observation was thin rim enhancement around the NE areas (Figs 3 and 4),

Table 5: Relationship of turbinate size to BT, presence of BT at 2 time points, and nasal cycling^a

Groups	Cases with BT	Cases with Size Asymmetry	BT Seen in Smaller Turbinates	Cases with Prior Exam	BT Seen on Prior Exam	Cases with Nasal Cycling
FS	16	10	6	9	4	0
Brain	29	12	4	13	10	3

^a The occurrence of BT relative to turbinate size shows that BT did not primarily occur in the smaller turbinate when size asymmetry was present. Patients who had a BT on 1 scan often did not always have a BT on a prior exam. Nasal cycling indicates a change in nasal turbinate symmetry between the index and prior study. This occurred relatively infrequently.

likely corresponding to normal mucosal enhancement. Faint septa could occasionally be seen in the NE areas. The NE areas were most commonly seen in the concha of the inferior turbinates, sparing the anterior aspects (Fig 3), with a similar distribution within the middle turbinates being the next most frequent site.

Another phenomenon we frequently observed was scattered small foci (usually much smaller than 4 × 5 mm) of NE, which either developed as a resolving stage of the BT or were present on the first postcontrast sequence. The scattered NE foci followed a distribution pattern similar to that of BTs (Figs 4 and 5).

Size Asymmetry

In about half of the cases of BT (10 of 16 in the fat-saturation group and 12 of 29 in the brain group, or 22 of 45 cases in both

groups), there was a significant side-to-side size asymmetry between the bilateral turbinates. Among those 22 cases, approximately 45% of them (10/22) showed BTs or more prominent BTs (if bilateral) in the smaller turbinates (Table 5).

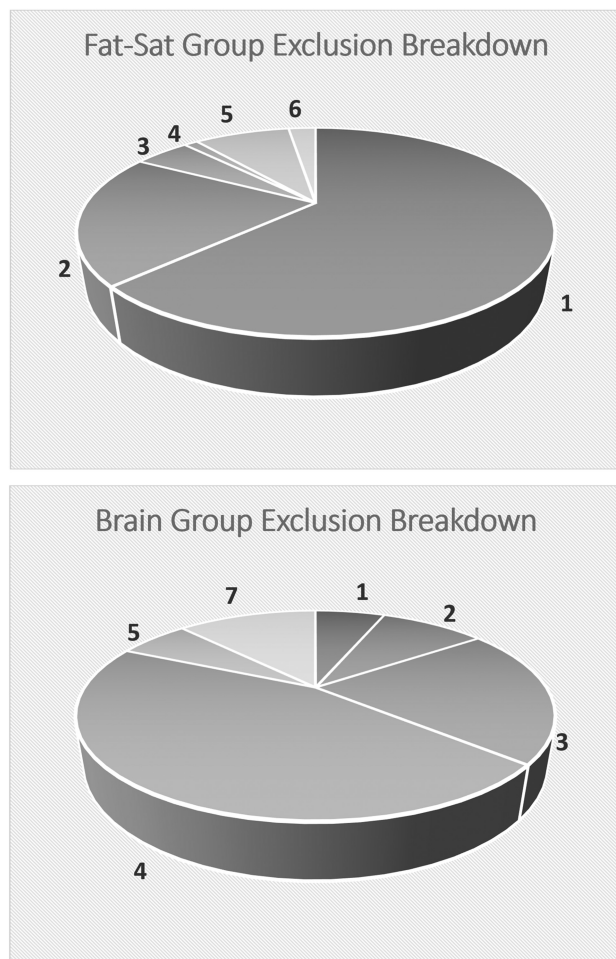


FIG 2. Breakdown of excluded cases: 1) insufficient inclusion of nasal turbinates, 2) significant postoperative or posttreatment changes involving the nasal cavity, 3) inappropriate scan sequence, 4) specific protocols, 5) significant motion or other artifacts, 6) significant nasal mass, and 7) scans from outside or satellite hospitals.

Signal Intensity on T2-Weighted Imaging

On T2WI, the signal intensity of the BTs and turbinates in general was variable but was mostly intermediate to high (Table 3), without any case falling into the low category.

Temporal Characteristics of Enhancement

Most cases of BT or scattered small foci of NE showed increasing enhancement with time. Most BT regions became scattered foci of NE with time (Fig 4), and 11 of 16 and 16 of 29 BTs in the fat-saturation and brain groups, respectively, showed resolution of BTs.

Prior Examination

Nine of the 16 cases of BT in the fat-saturation group and 13 of the 29 cases of BT in the brain group had adequate prior examinations, per the same exclusion criteria (Table 5). Four of the 9 cases of BTs in the fat-saturation group and 10 of the 13 cases of BTs in the brain group also demonstrated BTs on the prior examinations, respectively.

If there was any change in size asymmetry between the index and prior examinations, we considered this as a surrogate for nasal cycling. In summary, no nasal cycling was seen in the fat-saturation group, while 3 cases in the brain group (of 10) showed evidence of nasal cycling:

Case 1. The larger turbinate switched from the right side to the left between the index and prior examinations, while BTs remained predominantly on the left side on both examinations.

Case 2. The larger turbinate switched from the right side to the left between the index and the prior examinations, while BTs were predominantly in the smaller turbinates.

Case 3. The turbinates were symmetric on the index examination and slightly larger on the left on the prior examination, while the BT was predominantly seen on the left side on both examinations.

For cases with BTs seen on both the index and prior examinations but without evidence of nasal cycling between the examinations, 1 of 4 cases in the fat-saturation group and 3 of 7 cases in the brain group had BTs on opposite sides between the index and prior examinations (if on the right on the index examination, then on the left on the prior examination, and vice versa), while the

Table 6: Demographic summary of the recruited patients^a

	Total	Female	Male	P (M vs F)	Pediatric Patients	Adult Patients	P (Adult vs Pediatric)
FS group	75	40 (53%)	35 (47%)	.74 ^b	16 (21%) (6 mo to 14 yr)	59 (79%) (range, 18–81 yr)	.74 ^b
Brain group	75	41 (55%)	34 (45%)	.62 ^b	17 (23%) (2 mo to 17 yr)	58 (77%) (range, 24–86 yr)	1.00 ^b
P FS vs Brain		1.00 ^c				1.00 ^c	

Note:—P indicates P value; M, male; F, female.

^a All P values were calculated using the Fisher exact test.

^b To compare the sex and age composition of each group with the general population, assuming even sex distribution and approximately 24% pediatric population.

^c To compare the sex and age composition between the FS and brain groups.

Table 7: Demographic summary of the patients with black turbinates^a

	Total	Female	Male	P (M vs F)	Pediatric Patients	Adult Patients	P (Adult vs Pediatric)
FS group	16	11 (69%)	5 (31%)	.28 ^b	2 (12%) (11 and 14 yr)	14 (88%) (range, 31–74 yr)	.73 ^b
Brain group	29	17 (59%)	12 (41%)	.83 ^b	1 (3%) (10 yr)	28 (97%) (range, 24–79 yr)	.02 ^{b,c}
P FS vs brain		.54 ^d				.28 ^d	

^a All P values were calculated using the Fisher exact test.

^b To compare the sex and age compositions of each BT group with the general population, assuming even sex distribution and approximately 24% pediatric population.

^c Significant.

^d To compare the sex and age composition between the FS and brain BT groups.

remaining cases demonstrated BTs on the same side between the index and prior examinations.

In summary, benign BTs may not necessarily be present in the same patient at different time points and do not seem to be consistently influenced by nasal cycling.

DISCUSSION

The vascular supply and complex microvascular anatomy of the nasal turbinates can partially explain our findings. The main arterial supplies to the nasal turbinates are the posterolateral (or lateral) branches of the sphenopalatine arteries.^{8–10} Branches first supply the inferior turbinates, then the middle turbinates from their posterior aspects. Blood supply is supplemented by anastomotic branches from the anterior ethmoidal arteries that enter along the more anterior aspects of the turbinates.

The nasal tissues can vary in size, due to expansile or erectile tissues.^{11,12} This feature is due to the complex microvascular anatomy, consisting of capillaries, arteriovenous anastomoses, capacitance vessels or sinusoids, and postcapillary venules. It is the capacitance vessels or sinusoids that are responsible for the ability of nasal structures to change size by virtue of the amount of blood within them increasing or decreasing by several mechanisms.¹¹ Ng et al¹² evaluated the distribution of these erectile or cavernous tissues using MR imaging. The authors found the greatest change in size in the inferior turbinate, followed by the middle turbinate (anterior third less than the remainder) and anterior nasal septum. They concluded that this distribution represented that of the cavernous tissues in the nose. This distribution seems to coincide somewhat with the distribution of the most common sites for BT and NE foci and may also explain the filling

in of these areas with time. Additionally, the scattered NE foci seen in most of the cases imply that this NE phenomenon might fall within a continuous spectrum, with the BT cases having the most confluent NE foci.

The findings of benign BT, which include nonenhancing areas with well-defined, noninvasive borders confined within a turbinate, are contrasted with the more extensive findings involving adjacent structures seen in our case of IFRS (Fig 1).

Common observations in our benign BT cases of thin rim enhancement around the nonenhancing areas (Figs 3 and 4) and intermediate and high signal intensity on the T2-weighted images were not consistently described in the cases of IFRS reported in the literature^{1–4,7}

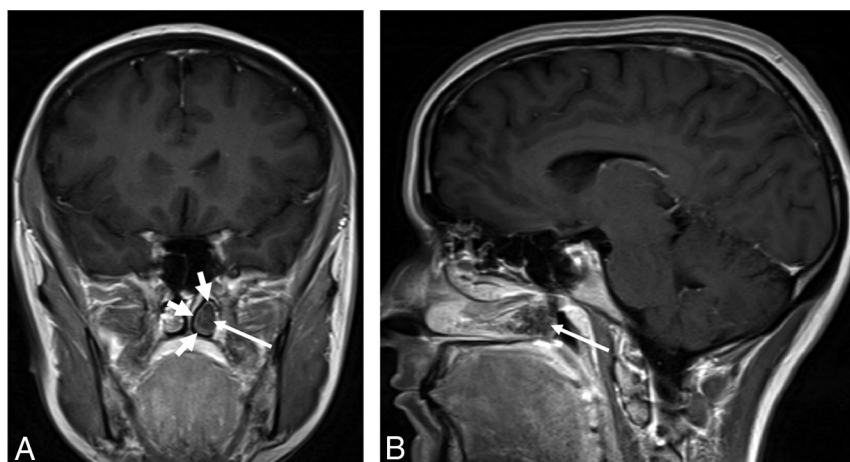


FIG 3. A 24-year-old immunocompetent woman with a history of a gestational trophoblastic neoplasm who had a brain MR imaging for a metastatic work-up. Coronal (A) and sagittal (B) postcontrast T1-weighted images show nonenhancement of the posterior aspect of the left inferior turbinate (*long arrows*) with thin rim enhancement (*short arrows*). The posterior aspect of the inferior turbinate is a common location of a black turbinate in immunocompetent patients.

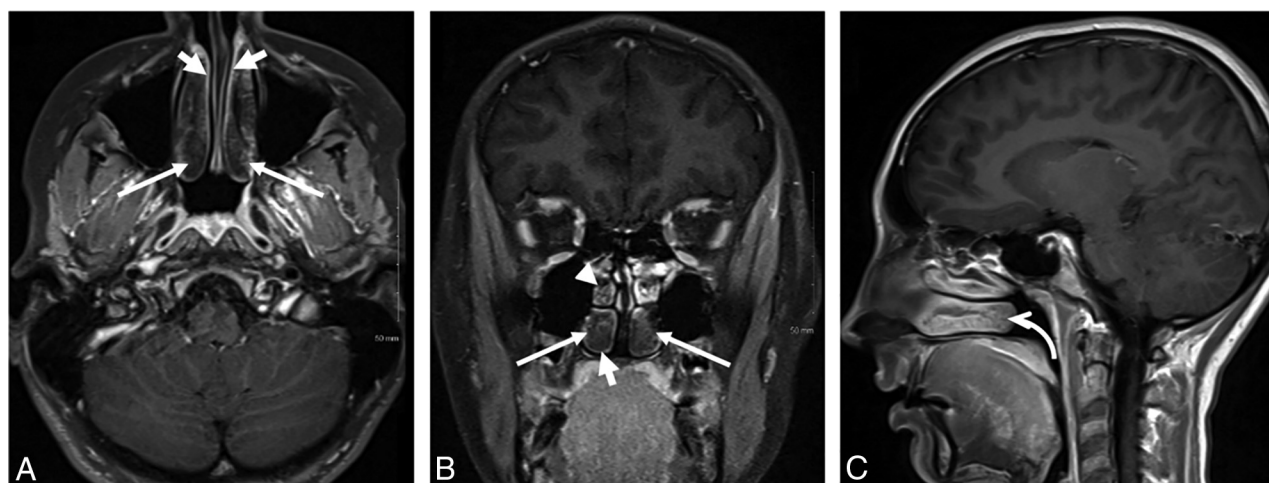


FIG 4. A 14-year-old immunocompetent adolescent girl with right-sided blurred vision, who had orbit and brain MR imaging for a multiple sclerosis work-up. The postcontrast images for the orbit MR imaging were obtained before those for the brain MR imaging. Axial (A) and coronal (B) postcontrast T1-weighted images with fat saturation show nonenhancement most pronounced in the posterior aspects of both inferior turbinates (*long arrows*) with thin rim enhancement (*short arrows*) and scattered nonenhancing foci in the right middle turbinate (*arrowhead*). The inferior turbinate, especially the posterior portion, is a common location of a BT in immunocompetent patients. The sagittal postcontrast image from the brain MR imaging (C), which is the last postcontrast sequence available, shows that the BT of the right interior turbinate is almost completely resolved and has transitioned into mildly scattered nonenhancing foci (*curved arrow*).

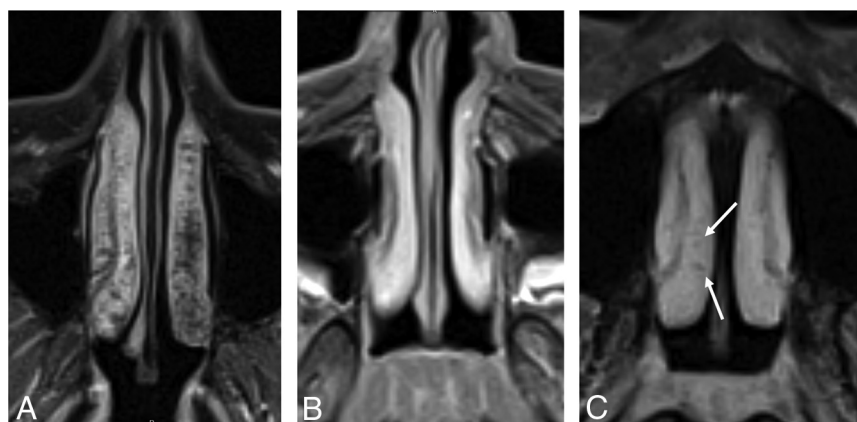


FIG 5. Axial postcontrast T1-weighted images with fat saturation from 3 different patients. A, A 43-year-old woman shows extensive nonenhancing “dots” in both inferior turbinates, left more than right, with relative sparing of the anterior aspects, which is a typical pattern of scattered nonenhancing foci. B, A 12-year-old girl shows the more homogeneous and intense enhancement of the nasal turbinates, which is typical of pediatric patients. C, A 36-year-old woman shows relatively homogeneous enhancement, but it is less intense than that in the pediatric patient, and there are a few small nonenhancing dots (arrows).

Table 8: Imaging features of benign BT in immunocompetent patients compared with those of invasive fungal rhinosinusitis in immunocompromised patients

	Incidental BT in Immunocompetent Patients	Patients with IFRS
Enhancement pattern	Nonenhancing centrally with smooth, thin peripheral enhancement, likely normal mucosal enhancement	Infiltrative nonenhancement extending into adjacent structures, without smooth, thin enhancing margin
T2 characteristic	Intermediate to hyperintense, but not hypointense	Variable: hypointense, intermediate, or hyperintense
Internal feature	Faint septa or confluent dots	Confluent nonenhancement
Most common location for BT	Posterior and midportions of inferior turbinate	Middle turbinate
NE confined to turbinate?	Yes	No
Temporal feature	Increased enhancement with time	Persistent nonenhancement

or seen in our case of IFRS. Choi et al⁴ stated that in patients with IFRS, “Although LoCE (Lack of Contrast Enhancement) showed variable signal intensity (SI), homogeneously or heterogeneously enhancing lesions showed exclusively low SI (100%, 12/12) on T2WI.” Seo et al,³ in their review of 23 patients with IFRS, found 17 patients who had nonenhancing areas in the sinonasal region (13 with extension into adjacent structures), and the signal intensity on the T2WI was variable, with most being hyperintense and many also having areas of iso- or hypointensity compared with the brain cortex.³ Therefore, there is no consistent signal intensity on the T2WI suggesting the diagnosis of IFRS when an NE turbinate is encountered in high-risk patients. Conversely, low signal intensity on T2WI was not seen in any of our patients with benign BTs.

Diffusion-weighted imaging may have little utility and is only mentioned by the authors of several series in the literature, and not necessarily with respect to the nasal turbinates.^{2,4} Safder et al² described restricted diffusion in 2 cases; however, Choi et al⁴ described facilitated diffusion in 2 of their cases. Choi et al also

felt that the NE areas were due to coagulation necrosis rather than infarction, therefore explaining this imaging finding.

The most frequent locations of NE turbinates in IFRS are also different from the distribution of benign BTs. Gillespie et al,¹³ in their retrospective study of 25 patients with IFRS, found that the most common site of involvement was the middle turbinate (62% of biopsied patients). Their hypothesis was that the middle turbinate filters the major volume of the nasal airflow and might have contributed to the predilection for fungal seeding in this region.

Compared with a true pathologic turbinate NE pattern in patients with IFRS, the NE turbinates in immunocompetent patients have the features summarized in Table 8. Overall, improving NE turbinates through the course of a scan with preserved peripheral (likely normal mucosal) enhancement and thin septa are the key features to differentiate benign BT from IFRS, which will more likely demonstrate persistent NE in affected turbinates; the NE of IFRS may extend into adjacent structures rather than having well-defined thin peripheral enhancement.

However, this comparison is itself limited by the relative rarity of cases of true pathologic turbinate NE both in the literature¹⁻⁷ and in daily practice.

There are several additional limitations to our study. We had a relatively small number of pediatric patients. In

both the fat-saturation and brain groups, the number of pediatric patients was significantly less than for the adult patients (Table 6). However, within the brain group, there was a statistically significant difference in the number of pediatric patients compared with adult patients demonstrating BTs (Table 7). While this could represent a true difference, we suspect it is due to the small pediatric sample size. Further investigation might be needed to definitively explain this finding and to better evaluate the pediatric population overall.

Additionally, the variable length of the sequences and the different protocols and scanners used could potentially affect the valuation of the temporal pattern of enhancement. However, we would suggest that similar scanner and protocol variability are present in many large practices and academic institutions, so this mix approximates the everyday scan variability that many radiologists will encounter.

Last, there was no pathologic proof of benignity of the BTs in our immunocompetent patients; however, evidence obtained from the patients’ electronic medical records supported this presumption.

CONCLUSIONS

Although a sign suggesting IFRS in the appropriate clinical setting, areas of NE within the nasal turbinates are common on both MR imaging with or without fat saturation in immunocompetent patients who have little chance of having IFRS. This benign NE will improve over subsequent series, have preserved thin peripheral enhancement, and will often have thin internal septa. Knowledge of the normal patterns of nasal turbinate enhancement can help radiologists better differentiate findings suggestive of IFRS from normal variations and lead to a higher positive predictive value of the BT sign.

REFERENCES

1. Nunes DM, Rocha AJ, Rosa Júnior M, et al. **"Black turbinate sign": a potential predictor of mucormycosis in cavernous sinus thrombophlebitis.** *Arq Neuropsiquiatr* 2012;70:78 CrossRef Medline
2. Safder S, Carpenter JS, Roberts TD, et al. **The "Black Turbinate" sign: an early MR imaging finding of nasal mucormycosis.** *AJNR Am J Neuroradiol* 2010;31:771–74 CrossRef Medline
3. Seo J, Kim HJ, Chung SK, et al. **Cervicofacial tissue infarction in patients with acute invasive fungal sinusitis: prevalence and characteristic MR imaging findings.** *Neuroradiology* 2013;55:467–73 CrossRef Medline
4. Choi YR, Kim JH, Min HS, et al. **Acute invasive fungal rhinosinusitis: MR imaging features and their impact on prognosis.** *Neuroradiology* 2018;60:715–23 CrossRef Medline
5. Bae MS, Kim EJ, Lee KM, et al. **Rapidly progressive rhino-orbito-cerebral mucormycosis complicated with unilateral internal carotid artery occlusion: a case report.** *Neurointervention* 2012;7:45–49 CrossRef Medline
6. Monroe MM, McLean M, Sautter N, et al. **Invasive fungal rhinosinusitis: a 15-year experience with 29 patients.** *Laryngoscope* 2013;123:1583–87 CrossRef Medline
7. Groppo ER, El-Sayed IH, Aiken AH, et al. **Computed tomography and magnetic resonance imaging characteristics of acute invasive fungal sinusitis.** *Arch Otolaryngol Head Neck Surg* 2011;137:1005–10 CrossRef Medline
8. Som PM, Lawson W, Fatterpekar GM, et al. **Embryology, anatomy, physiology, and imaging of the sinonasal cavities.** In: Som PM, Curtin HD, eds. *Head and Neck Imaging*. 5th ed. St. Louis: Mosby; 2011:116–17
9. Osborn AG. **The nasal arteries.** *AJR Am J Roentgenol* 1978;130:89–97 CrossRef Medline
10. Strandling S. **Nose, nasal cavity and paranasal sinuses.** In: Birch R, Collins P, Gray H, et al, eds. *Gray's Anatomy: The Anatomical Basis of Clinical Practice*. 2015. Philadelphia: Elsevier Limited; 2016:556–70
11. Widdicombe, J. **Microvascular anatomy of the nose.** *Allergy* 1997; 52(40 Suppl):7–11
12. Ng BA, Ramsey RG, Corey JP. **The distribution of nasal erectile mucosa as visualized by magnetic resonance imaging.** *Ear Nose Throat J* 1999;78:159, 163–66 Medline
13. Gillespie MB, O'Malley BW Jr, Francis HW. **An approach to fulminant invasive fungal rhinosinusitis in the immunocompromised host.** *Arch Otolaryngol Head Neck Surg* 1998;124:520–26 CrossRef Medline