



Providing Choice & Value

Generic CT and MRI Contrast Agents

**FRESENIUS
KABI**

CONTACT REP

AJNR

**Fast and Robust Unsupervised Identification
of MS Lesion Change Using the Statistical
Detection of Changes Algorithm**

T.D. Nguyen, S. Zhang, A. Gupta, Y. Zhao, S.A. Gauthier
and Y. Wang

This information is current as
of July 17, 2025.

AJNR Am J Neuroradiol 2018, 39 (5) 830-833

doi: <https://doi.org/10.3174/ajnr.A5594>

<http://www.ajnr.org/content/39/5/830>

Fast and Robust Unsupervised Identification of MS Lesion Change Using the Statistical Detection of Changes Algorithm

T.D. Nguyen, S. Zhang, A. Gupta, Y. Zhao, S.A. Gauthier, and Y. Wang



ABSTRACT

SUMMARY: We developed a robust automated algorithm called statistical detection of changes for detecting morphologic changes of multiple sclerosis lesions between 2 T2-weighted FLAIR brain images. Results from 30 patients showed that statistical detection of changes achieved significantly higher sensitivity and specificity (0.964, 95% CI, 0.823–0.994; 0.691, 95% CI, 0.612–0.761) than with the lesion-prediction algorithm (0.614, 95% CI, 0.410–0.784; 0.281, 95% CI, 0.228–0.314), while resulting in a 49% reduction in human review time ($P = .007$).

ABBREVIATIONS: LPA = lesion prediction algorithm; SDC = statistical detection of changes

Patients with multiple sclerosis undergo regular MRIs to monitor disease activity and therapeutic response.¹ Volumetric brain MR imaging protocols with 1-mm³ isotropic resolution have become increasingly common for imaging patients with MS but result in hundreds of images, making detection of new lesions or changes in lesion morphology very time-consuming for radiologists. One approach to overcoming this problem is to extract lesion masks with a lesion-segmentation algorithm²; these masks are subtracted to yield a lesion-change mask. Alternatively, lesion change can be detected on the subtraction of 2 images either by humans³ or with the help of an algorithm relying on the subtraction signal and lesion geometry.⁴ While image subtraction can substantially improve lesion contrast, separating lesion change from background noise requires consideration of the statistical properties of the signal and noise.

Here we propose a rapid and robust algorithm for statistical detection of changes (SDC) in WM lesions. We describe a specific SDC implementation using the Neyman-Pearson detector in sta-

tistics to optimally detect lesion change according to the MR imaging signal-to-noise property.

MATERIALS AND METHODS

SDC Lesion-Detection Algorithm

Given 2 MR images I_1 and I_2 of the same brain acquired at 2 time points, the voxel-subtraction signal $d = I_2 - I_1$ (Fig 1) is assumed to follow a Gaussian distribution $N(\mu, \sigma^2)$ with mean μ and SD σ , in which σ can be estimated from the set of nonlesion WM voxels on the subtraction image. Most of these voxels belong to the intersection of the 2 WM masks obtained by brain segmentation tools (such as FSL; <http://www.fmrib.ox.ac.uk/fsl>)⁵ from T1-weighted structural images. These masks typically exclude large lesions that are hypointense on T1WI and therefore consist mainly of nonlesion voxels (On-line Fig 1).

The MR imaging signal-to-noise property can be used to formulate an optimal SDC of lesions as a composite statistical test between 2 hypotheses of the following likelihood functions:

$$H_0 \text{ (voxel is "unchanged")}: p(d | H_0) = N(0, \sigma^2),$$

$$H_1 \text{ (voxel is "changed")}: p(d | H_1) = N(\mu, \sigma^2), \mu \neq 0.$$

In this work, the SDC test statistic was computed over a 3-voxel connected neighborhood based on the currently accepted minimum MS lesion size requirement of 3 mm (3 voxels in 1-mm³ isotropic images)⁶ and on the assumption that the subtraction signals within this small neighborhood are similar. Denoting the subtraction signals at the i -th voxel and its neighbor voxels as d_{i1}, \dots, d_{i3} and assuming $\mu > 0$ (positive change), the test statistic t_i can be computed from the log-likelihood ratio test⁷ and compared with a threshold γ to make a decision:

Received November 21, 2017; accepted after revision January 20, 2018.

From the Department of Radiology (T.D.N., S.Z., A.G., Y.W.), Feil Family Brain and Mind Research Institute (A.G., S.A.G.), and Departments of Healthcare Policy and Research (Y.Z.) and Neurology (S.A.G.), Weill Cornell Medicine, New York, New York.

This work was supported by research grants from the National Institutes of Health (R01 NS090464) and the National MS Society (RG-1602-07671).

Please address correspondence to Thanh D. Nguyen, PhD, 515 East 71st St, Suite S-106, New York, NY 10021, e-mail: tdn2001@med.cornell.edu

Indicates open access to non-subscribers at www.ajnr.org

Indicates article with supplemental on-line photos.

<http://dx.doi.org/10.3174/ajnr.A5594>

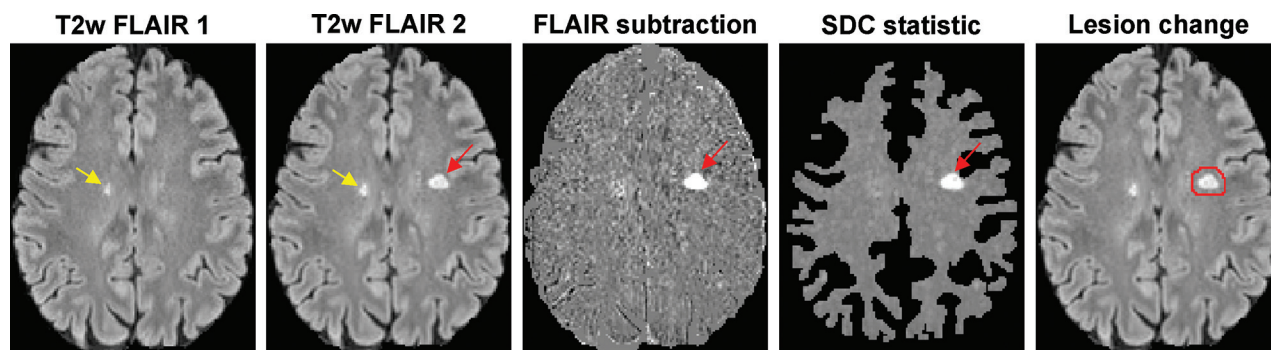


FIG 1. Schematic of the proposed SDC lesion-change detection algorithm on the T2-weighted FLAIR subtraction image. One unchanged lesion (yellow arrow) and 1 new lesion (red arrow) are correctly identified by the SDC. The algorithm automatically generates red ROIs, which encompass the detected areas of change on the second FLAIR image to help the human reader quickly identify lesion changes.

$$1) \quad t_i = \sum_{j=1}^3 d_{ij} \geq \frac{H_1}{H_0} \gamma.$$

Here γ was chosen to control the false-positive rate $P_{FP} = P(t_i > \gamma | H_0)$. According to the Neyman-Pearson lemma, this test provides the best detection power for a given P_{FP} regardless of the unknown mean μ (uniformly most powerful detector).⁷

The test statistic is maximized over all possible neighborhoods surrounding the voxel, to increase the sensitivity of lesion detection:

$$2) \quad t_i = \max(t_{ik}, k \in V_i),$$

where V_i denotes a 3-voxel connected neighborhood system of the i -th voxel (On-line Fig 2). Intuitively, this test statistic encodes in probabilistic terms the expectation that a bright voxel on the subtraction image is more likely to be identified as “changed” if at least 2 of its neighboring voxels also have high signals.

MR Imaging Experiment

This was a retrospective study of 30 patients with MS with 2 consecutive brain MRIs (mean scan interval, 267 ± 104 days; range, 15–410 days) performed on 3T scanners (Magnetom Skyra, VE11A software; Siemens, Erlangen, Germany). The imaging protocol consisted of an MPRAGE T1WI sequence for brain structure (TR/TE/TI = 2300/2.3/900 ms, 1 mm³ isotropic) and a T2WI FLAIR sequence for lesion detection (TR/TE/TI = 7600/446/2450 ms, 1 mm³ isotropic). After skull removal and bias field correction, FLAIR images were coregistered into the half-way space using the FMRIB Linear Image Registration Tool algorithm (FLIRT; <http://www.fmrib.ox.ac.uk/fsl/fslwiki/FLIRT>)⁵ to ensure that the degree of blurring introduced by coregistration was similar between images because this similarity improves subtraction. To account for changes in image contrast or dynamic range (eg, due to different receiver gain settings or slight changes in imaging parameters), we performed image-intensity normalization before subtraction. The robust intensity range (second and 98th percentiles, denoted as m and M , respectively) was computed for each image. The image intensity of the second image I_2 was then scaled linearly to match that of the first image I_1 as follows: $I_{2, \text{scaled}} = \alpha I_2 + \beta$, where $\alpha = (M_1 - m_1) / (M_2 - m_2)$ and $\beta = [(M_1 - \alpha M_2) + (m_1 - \alpha m_2)] / 2$. In addition, brain GM, WM, and CSF masks were obtained from the T1WI using the FMRIB Automated Segmentation Tool (FAST; <https://fsl.fmrib.ox.ac.uk/fsl/fslwiki/>

FAST) algorithm.⁵ The SDC test statistic (Equations 1 and 2) was then computed and thresholded to generate a change mask (Fig 1). The false-positive rate P_{FP} was set to 0.0001, which means that, on average, 50 of approximately 500,000 WM voxels may be incorrectly labeled as “changed.” To reduce the number of false-positives, we imposed additional constraints on lesion size (≥ 3 voxels), location (lesions located within 2 voxels of the CSF border had to be part of a larger lesion that extended outside this border), and intensity on the second FLAIR image (> 2 SDs above the mean normal-appearing WM intensity, ie, WM voxels that do not appear bright on FLAIR were excluded).

For comparison, the lesion prediction algorithm (LPA), part of the Lesion Segmentation Tool toolbox (LST; <http://www.applied-statistics.de/lst.html>),⁸ was used to compute the lesion masks from FLAIR images. This algorithm consists of a binary classifier in the form of a logistic regression model trained on the data of 53 patients with MS.⁸ The lesion masks were then subtracted to obtain the change mask without any human revision. Like the SDC, lesion changes of < 3 voxels were excluded.

Statistical Analysis

A neuroradiologist with 6 years of experience reviewed the 2 FLAIR and the subtraction images with the help of computer-generated color ROIs that encompassed the detected lesion changes (Fig 2). These were labeled as “true-positive” or “false-positive.” The reader also reviewed the images outside these ROIs to count the number of missed (false-negative) and unchanged (true-negative) lesions. Lesion changes detected by the SDC and LPA were presented in randomized order (both by subject and by detection algorithm) to the reader, who was blinded to the algorithm. The image review time was recorded for each subject and algorithm. A 2-tailed paired-sample t test was used to compare the mean review time per subject of SDC and LPA. The sensitivity and specificity of each method were calculated using the generalized estimating equation logistic regression, which accounts for the correlation among the measurements within the same subject.⁹

RESULTS

Figure 2 shows an example of lesion detection, in which the LPA generated more false-positives than the SDC and missed a small

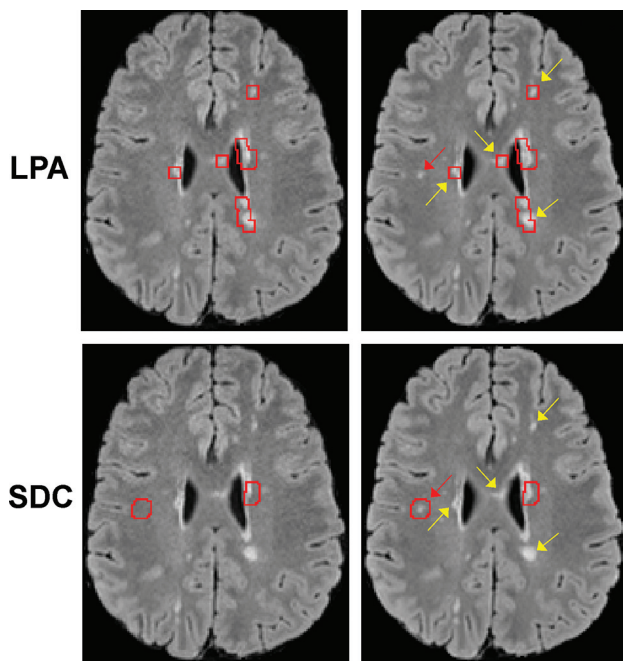


FIG 2. Comparison of lesion changes identified by the LPA and SDC (indicated by the red ROIs generated by the algorithms and superimposed on the T2 source FLAIR images). Each column shows images acquired at a different time points. The LPA identifies more false-positives (yellow arrows) yet misses a new small lesion (red arrow). The SDC correctly classifies positive lesion changes in concordance with the human expert.

new lesion (On-line Fig 3). In 30 subjects, the SDC detected 344 lesion changes, or an average of 11 ± 7 per subject (range, 4–33), while the LPA detected 1506 changes, or an average of 50 ± 38 per subject (range, 5–152). This result led to a 49% reduction in human review time per case (116 ± 44 seconds; range, 50–182 seconds, by SDC versus 229 ± 122 seconds; range, 76–447 seconds, by LPA, $P = .007$). Despite fewer detected changes and decreased review time, the SDC missed only 2 new lesions compared with 34 missed lesions by the LPA. The false-positive rate was 0.241 and 0.735 for SDC and LPA, respectively. With the neuroradiologist's reading used as the reference standard, the SDC achieved both higher sensitivity (0.964; 95% CI, 0.823–0.994 by SDC, versus 0.614; 95% CI, 0.410–0.784 by LPA) and higher specificity (0.691; 95% CI, 0.612–0.761 by SDC, versus 0.281; 95% CI, 0.228–0.314 by LPA). Because the 95% CI for the SDC does not overlap that for the LPA regarding both sensitivity and specificity, we concluded that the difference between the 2 diagnostic methods is statistically significant. The Table summarizes the diagnostic accuracy of each algorithm for lesion-change detection.

DISCUSSION

Our data show that the proposed SDC algorithm based on the optimal Neyman-Pearson detector is a computer-assisted tool that can improve the MS lesion detection rate and decrease image-analysis time, thereby reducing the reader's fatigue. The improved robustness of the SDC can be attributed to its probabilistic approach, which uses the statistical properties of the FLAIR subtraction signal within a connected voxel neighborhood to derive an optimal detection threshold for change detection. Although only

Summary of diagnostic accuracy of the SDC and LPA algorithms for detecting positive lesion change (lesion growth) between 2 FLAIR images with side-by-side image review by a human reader as the reference standard

Predicted Lesion Status	True Lesion Status by a Human Reader	
	Change	No Change
By SDC		
Change	83	261
No change	2	824
By LPA		
Change	52	1454
No change	34	524

positive change (lesion growth) was considered, detecting negative change (lesion shrinkage) can be performed by swapping the order of the FLAIR images. The algorithm was designed to be highly sensitive (0.964 sensitivity) for serving as a screening tool for new lesions while providing a reasonable specificity (only 1 of 3 unchanged lesions was misclassified, compared with 3 of 4 for the LPA). We also considered the longitudinal pipeline implemented in the LST toolbox⁸ and found that it has much lower sensitivity (0.386; 95% CI, 0.269–0.518) though higher specificity (0.994; 95% CI, 0.985–0.999) compared with the LPA mask-subtraction method and therefore is less suited for diagnostic purposes.

This initial feasibility study has several limitations. We have focused on WM lesions to circumvent the limited contrast of cortical or deep GM lesions on FLAIR. Further studies using pulse sequences tailored for GM lesion detection (eg, double inversion recovery at 7T) are warranted to evaluate the SDC for this lesion cohort. Because most subjects (18/30) were imaged at approximately 1-year intervals, it was not possible to assess statistically whether the accuracy of SDC and LPA varies with follow-up intervals. Comparison with other algorithms and further evaluation on the impact of image interpretation in larger patient imaging datasets are also needed, particularly in those with abrupt anatomic changes between scans, which can make image alignment difficult.

CONCLUSIONS

The SDC lesion change detection algorithm has higher sensitivity and specificity than the LPA algorithm.

Disclosures: Thanh D. Nguyen—RELATED: Grant: National Institutes of Health (R01NS090464), National MS Society.* Ajay Gupta—RELATED: Grant: National Institutes of Health (R01NS090464).* Susan A. Gauthier—UNRELATED: Grants/Grants Pending: Mallinckrodt, Genzyme, Novartis.* Yi Wang—RELATED: Grant: National Institutes of Health (R01NS090464), National MS Society. *Money paid to the institution.

REFERENCES

- Wattjes MP, Rovira À, Miller D, et al. Evidence-based guidelines: MAGNIMS consensus guidelines on the use of MRI in multiple sclerosis—establishing disease prognosis and monitoring patients. *Nat Rev Neurol* 2015;11:597–606 [CrossRef Medline](#)
- Carass A, Roy S, Jog A, et al. Longitudinal multiple sclerosis lesion segmentation: resource and challenge. *Neuroimage* 2017;148:77–102 [CrossRef Medline](#)
- van Heerden J, Rawlinson D, Zhang AM, et al. Improving multiple sclerosis plaque detection using a semiautomated assistive approach. *AJNR Am J Neuroradiol* 2015;36:1465–71 [CrossRef Medline](#)
- Battaglini M, Rossi F, Grove RA, et al. Automated identification of

- brain new lesions in multiple sclerosis using subtraction images.** *J Magn Reson Imaging* 2014;39:1543–49 [CrossRef Medline](#)
5. Jenkinson M, Beckmann CF, Behrens TE, et al. **FSL.** *Neuroimage* 2012; 62:782–90 [CrossRef Medline](#)
 6. Filippi M, Rocca MA, Ciccarelli O, et al; MAGNIMS Study Group. **MRI criteria for the diagnosis of multiple sclerosis: MAGNIMS consensus guidelines.** *Lancet Neurol* 2016;15:292–303 [CrossRef Medline](#)
 7. Kay SM. *Fundamentals of Statistical Signal Processing: Detection Theory.* Vol. II. Englewood Cliffs, NJ: Prentice Hall; 1998
 8. Schmidt P. *Bayesian Inference for Structured Additive Regression Models for Large-Scale Problems with Applications to Medical Imaging* [PhD thesis]. Munich: Ludwig-Maximilians-Universität München; 2017
 9. Fleiss JL, Levin B, Paik MC. *Statistical Methods for Rates and Proportions.* Hoboken: Wiley; 2003