



Discover Generics

Cost-Effective CT & MRI Contrast Agents



FRESENIUS
KABI

WATCH VIDEO

AJNR

T1 Hyperintense Vertebral Column Melanoma Metastases

D.S. McMenamin, S.L. Stuckey and G.J. Potgieter

AJNR Am J Neuroradiol 2007, 28 (9) 1817-1818

doi: <https://doi.org/10.3174/ajnr.A0657>

<http://www.ajnr.org/content/28/9/1817>

This information is current as
of June 6, 2025.

CASE REPORT

D.S. McMennamin
S.L. Stuckey
G.J. Potgieter

T1 Hyperintense Vertebral Column Melanoma Metastases

SUMMARY: We report a case of T1 hyperintense vertebral column metastatic disease in a 24-year-old man with metastatic melanoma. Radiologic work-up revealed multiple lytic vertebral metastases on CT with corresponding T1 hyperintensity on MR imaging. Whereas T1 hyperintensity associated with melanoma has been well documented, to our knowledge, this is the first described case of widespread T1 hyperintense metastatic bone disease. T1 hyperintense bone lesions are virtually always benign. However, correlation with the lesion appearances on other MR imaging sequences and imaging modalities as well as with the clinical history may occasionally suggest otherwise.

The vast majority of T1 hyperintense vertebral column lesions are benign. Spinal column metastatic disease of melanoma origin is not, however, uncommonly encountered. Metastatic melanoma has been demonstrated to produce T1 hyperintense lesions elsewhere in the body either related to the melanin or hemorrhage content. We report the first case in the English literature of metastatic melanoma producing widespread T1 hyperintense vertebral column lesions.

Case Report

A 24-year-old man with no remarkable medical history was admitted after a grand mal seizure. Examination revealed no focal neurology, a left painless axillary mass, several subcutaneous pigmented nodules, and tenderness within the cervical, thoracic, and lumbar spine.

CT of the brain revealed multiple enhancing lesions within the cerebrum and cerebellum, some with high attenuation on the non-contrast study consistent with hemorrhage. CT of the chest revealed large left axillary lymphadenopathy, multiple lung nodules, and multiple subcutaneous nodules. CT of the abdomen revealed multiple low attenuation lesions within the liver and spleen and multiple subcutaneous nodules. CT of the cervical, thoracic, and lumbar spine revealed multiple lytic lesions.

MR imaging revealed multiple T1 hyperintense lesions throughout the cervical, thoracic, and lumbar spine, corresponding to the lytic lesions seen on CT (Fig 1A, -B). In addition, multiple T1 hyperintense subcutaneous and intramuscular nodules were identified (Fig 1B).

Cytologic examination of the left axillary nodes demonstrated clusters of malignant cells, some with heavy pigmentation. Immunoperoxidase stains were positive for markers S-100, HMB45, and Melan-A. These findings were consistent with metastatic melanoma.

Discussion

T1 hyperintense signal intensity on MR imaging in melanoma has been attributed to hemorrhage or melanin.¹ Several studies have demonstrated a correlation between T1 shortening and melanin content but a weaker correlation between T2 shortening and melanin content. The increased T1 signal intensity is thought to be the result of the paramagnetic effects of

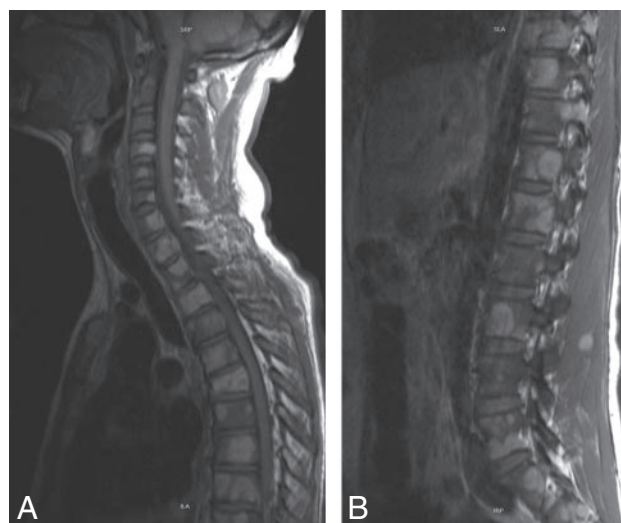


Fig 1. A, Sagittal T1 MR imaging. Multiple bone lesions with T1 hyperintensity involve the cervical and thoracic spine, with a pathologic fracture of T6 (T1 turbo spin-echo; TR, 624 ms; TE, 14 ms; field of view, 360 mm; matrix, 448 × 224; number of excitations, 1; section thickness, 4 mm; intersection gap, 0.4 mm; scan time, 1 minute 55 seconds; echo-train length, 5; phase-encoding direction, superior to inferior). B, Parasagittal T1 MR imaging. Multiple lesions with T1 hyperintensity involve the thoracic and lumbar spine, and a T1 hyperintense metastatic nodule is evident in the paraspinal muscles (T1 turbo spin-echo; TR, 624 ms; TE, 14 ms; field of view, 360 mm; matrix, 448 × 224; number of excitations, 1; section thickness, 4 mm; intersection gap, 0.4 mm; scan time, 1 minute 55 seconds; echo-train length, 5; phase-encoding direction, superior to inferior).

melanin, presumably related to the chelated metal ions or the free radicals known to exist in melanin.²⁻⁴

Whereas increased T1 signal intensity in melanoma has been well documented elsewhere, to our knowledge, this is the first case in relation to spinal column melanoma metastases. This has clinical significance for the ability of MR imaging to detect metastatic melanoma spinal column lesions. MR imaging detection in current clinical practice of spinal column metastatic disease is heavily reliant upon detecting such lesions on T1-weighted images.⁵ Metastatic lesions are well known to generally approach the signal intensity of muscle, and in combination with adult T1 mildly hyperintense background marrow intensity, this results in excellent sensitivity.⁵ When performing MR imaging in search of metastatic melanoma, given that these lesions may be T1 hyperintense, it therefore seems advisable to perform more than T1-weighted imaging (eg, postgadolinium T1-weighted imaging with fat suppression or short tau inversion recovery), because such lesions may not be

Received February 3, 2007; accepted after revision March 5.

From the Department of Radiology (D.S.M., S.L.S.), Princess Alexandra Hospital, Brisbane, Australia; Department of Radiology (G.J.P.), Royal Brisbane and Women's Hospital, Brisbane, Australia.

Please address correspondence to Gerhardus J. Potgieter, Department of Radiology, Royal Brisbane and Women's Hospital, Post Office, 4029, Herston, Qld, Australia; e-mail: gerhard777@yahoo.co.uk

DOI 10.3174/ajnr.A0657

evident if the background marrow is of similar intensity to the lesion.

Conclusion

T1 hyperintense marrow lesions are usually benign; however, this case of metastatic melanoma with T1 hyperintense bone lesions demonstrates that it is always prudent to review such lesions on other sequences. When investigating or staging melanoma, careful review for such T1 hyperintense lesions and additional sequences seems warranted.

References

1. Premkumar A, Marincola F, Taubenberger J, et al. **Metastatic melanoma: correlation of MRI characteristics and histopathology.** *J Magn Reson Imaging* 1996;6:190–94
2. Gomori JM, Grossman RI, Shields JA, et al. **Choroidal melanomas: correlation of NMR spectroscopy and MR imaging.** *Radiology* 1986;158:443–45
3. Woodruff WW, Jr, Djang WT, McLendon RE, et al. **Intracerebral malignant melanoma: high-field-strength MR imaging.** *Radiology* 1987;165:209–13
4. Atlas SW, Grossman RI, Gomori JM, et al. **MR imaging of intracranial metastatic melanoma.** *J Comput Assist Tomogr* 1987;11:577–82
5. Daffner RH, Lupetin AR, Dash N, et al. **MRI in the detection of malignant infiltration of bone marrow.** *AJR Am J Roentgenol* 1986;146:353–58