



## Discover Generics

Cost-Effective CT & MRI Contrast Agents



WATCH VIDEO

# AJNR

This information is current as of June 27, 2025.

## T2 Relaxation Values in the Developing Preterm Brain

Serena J. Counsell, Nigel L. Kennea, Amy H. Herlihy, Joanna M. Allsop, Michael C. Harrison, Frances M. Cowan, Joseph V. Hajnal, Bridget Edwards, A. David Edwards and Mary A. Rutherford

*AJNR Am J Neuroradiol* 2003, 24 (8) 1654-1660  
<http://www.ajnr.org/content/24/8/1654>

## T2 Relaxation Values in the Developing Preterm Brain

Serena J. Counsell, Nigel L. Kennea, Amy H. Herlihy, Joanna M. Allsop, Michael C. Harrison, Frances M. Cowan, Joseph V. Hajnal, Bridget Edwards, A. David Edwards, and Mary A. Rutherford

**BACKGROUND AND PURPOSE:** MR imaging is increasingly used to assess maturation and disease in the preterm brain. Knowledge of the changes in T2 values with increasing postmenstrual age (PMA) will aid image interpretation and help in the objective assessment of maturation and disease of the brain in infants. The aim of this study was to obtain T2 values in the preterm brain from 25 weeks' gestational age (GA) until term-equivalent age in infants who had normal neurodevelopmental findings at a minimum corrected age of 1 year.

**METHODS:** The study group consisted of 18 preterm infants, born at 33 weeks' GA or sooner. The median GA of the infants at birth was 27 weeks (range, 23–33 weeks), and the median PMA at imaging was 31 weeks (range, 25–41 weeks). T2 measurements were obtained using a 1.0-T MR system and a four-echo pulse sequence (TR/TE, 2500/ 30, 60, 110, and 600). T2 values were measured in the thalami, lentiform nuclei, frontal white matter, occipital white matter, and central white matter at the level of the centrum semiovale.

**RESULTS:** A significant negative linear correlation between T2 values and PMA was demonstrated in the lentiform nuclei ( $P = .003$ ), frontal white matter ( $P < .0001$ ), occipital white matter ( $P < .0001$ ), and central white matter at the level of the centrum semiovale ( $P < .0001$ ). T2 values were not significantly reduced with increasing PMA in the thalami ( $P = .06$ ).

**CONCLUSION:** T2 values decrease with increasing PMA in the preterm brain.

MR imaging has proved to be a useful tool for investigating the developing preterm brain (1–5), and an increasing number of centers are using MR imaging to assess cerebral disease in preterm infants. In addition to the qualitative assessment of MR images, quantitative MR techniques are available, including the measurement of T2 values. T2 values are related to the tissue water content and higher in free water than in water bound to macromolecules, such as myelin lipids and proteins. While cerebral T2 values have been investigated in neonates born at term (6) and in preterm infants at term (7), little is known

about T2 values in the developing preterm brain. Knowledge of the changes in T2 values with increasing postmenstrual age (PMA) in the preterm period will aid the evaluation of MR images in this group of patients, and T2 measurements may provide a quantitative method of assessing maturation and disease in the preterm brain.

The aim of this study was to obtain T2 values in the preterm brain from 25 weeks' gestational age (GA) until term-equivalent age to establish the relationship between PMA and T2 values in preterm infants with no evidence of disease in the cerebral white matter on MR images and with normal neurologic findings at a minimum corrected age of 1 year.

Received December 17, 2002; accepted after revision April 28, 2003.

From the Robert Steiner MR Unit, Imaging Sciences Department, MRC Clinical Sciences Centre (S.J.C., A.H.H., J.M.A., J.V.H., A.D.E., M.A.R.) and the Department of Paediatrics (N.L.K., M.C.H., F.M.C., B.E., A.D.E., M.A.R.), Hammersmith Campus, Imperial College, DuCane Road, London, England.

Funding from the Medical Research Council, Philips Medical Systems, and the Garfield Weston Foundation.

This work was presented at the Annual Meeting of the International Society of Magnetic Resonance in Medicine, Glasgow, Scotland, 2001.

Address reprint request to Dr Mary A. Rutherford, Robert Steiner MR Unit, Imaging Sciences Department, MRC Clinical Sciences Centre, Imperial College, Hammersmith Campus, DuCane Road, London, W12 0HS, England.

© American Society of Neuroradiology

### Methods

Approval of this study was granted by the local research ethics committee, and written informed parental consent was obtained for each infant.

#### Pulse Sequence Verification

Verification tests were performed on a gel phantom. The phantom was imaged by using nine separate conventional spin-echo (CSE) pulse sequences with a TR/TE of 2500/10, 20, 50, 100, 200, 300, 400, 500, and 600. Measurements were taken from a 865-mm<sup>2</sup> circular region of interest (ROI) positioned in the center of the phantom images. T2 values were calculated by fitting the data with the following equation:  $y = M_0 \times \exp(-x/$

T2), where  $y$  is the signal intensity,  $M_0$  is the proton density, and  $x$  is the TE.

Additionally, the phantom was imaged by using a purposely designed four-echo CSE pulse sequence (2500/30, 60, 110, and 600), and T2 was calculated by using the same method. In both cases, four transverse sections were obtained with a field of view of 20 cm, a section thickness of 4 mm, and a section gap of 4 mm to reduce interference between sections. The T2 values obtained by using these two sequences were compared.

### Subjects

The study group consisted of 18 preterm infants, nine male and nine female, born at 33 weeks' GA or sooner. None of the infants had evidence of a genetic, metabolic, or viral infective disorder. No infant had neurologic complications in the neonatal period. The median GA of the infants was 27 weeks (range, 25–33 weeks) at birth, and the median birth weight of the infants was 986 g (range, 696–2040 g). The median PMA of the infants at imaging was 31 weeks (range, 25–41 weeks), and the median postpartum age at imaging was 1 week (range, 0–15 weeks). Four infants were imaged twice between birth and term-equivalent age. GA was calculated from the date of the mother's last menstrual period and confirmed with early antenatal sonograms.

### Outcome Assessments

Two experienced neurodevelopmental pediatricians who were unaware of the imaging findings (F.M.C., B.E.) assessed all of the children. All had a developmental quotient of  $\geq 85$  (median, 98.5; range, 85–114), which was obtained by using the revised Griffiths scales (8) at a corrected age of between 1 and 2 years. They all achieved an optimality score of  $\geq 64$  (median, 74; range, 65–78) on a standardized infant neurologic examination (9); this score was compatible with independent walking by 2 years of age (10). None had cerebral palsy. All showed head growth within 1 SD of their birth measurements.

### MR Imaging

MR imaging was performed using a 1.0-T MR system (Philips Medical Systems, Best, the Netherlands) situated in the neonatal intensive care unit, which allowed very preterm infants to be imaged without compromising their intensive care (11). This system had a short bore that allowed access to the infants at all times during imaging with a relatively small area of homogeneous field (central volume of 120-mm diameter and 50-mm thickness at  $\pm 2.9$  ppm) (12). The patients' pulse oximetry readings, electrocardiographic findings, and temperature were monitored, and an experienced neonatologist (N.L.K., M.C.H.) remained in the imaging room throughout the procedure. In the early neonatal period, seven infants were ventilated or received continuous positive airways pressure at the time of their MR examination. When possible, infants were imaged during postprandial sleep; however, oral chloral hydrate (20–30 mg/kg) was usually required to successfully image the infants at term-equivalent age.

Transverse T1-weighted CSE (600/20) and T2-weighted fast spin-echo (TR/TE<sub>eff</sub>, 3500/208) images were obtained in each case. To obtain MR images of the whole head within the constraints of the homogeneous field, infants were initially positioned so that the level of the basal ganglia was at the isocenter, and images were obtained at this level. The bed of the imager was then moved out of the bore of the magnet so that the central white matter region was at the isocenter, and images were acquired at this level. Finally, the bed was moved toward the bore so that the cerebellum was at the isocenter (infants  $\leq 30$  weeks' GA were imaged in two sections).

T2 measurements were obtained by using the purposely designed four-echo CSE pulse sequence described before (2500/30, 60, 110, and 600). As in the pulse sequence verifica-

tion tests, four transverse sections were obtained with a field of view of 20 cm, a section thickness of 4 mm, and a section gap of 4 mm. To ensure that the central white matter and basal ganglia regions were within the area of the homogeneous field, the infants were positioned so that the midventricular region was at the isocenter for the T2 measurement sequence. The acquisition time for this sequence was 5 minutes 35 seconds.

### Region of Interest Analysis

ROIs were placed in the thalami, lentiform nuclei, frontal white matter, occipital white matter, and central white matter at the level of the centrum semiovale, bilaterally (Figs 1–3). ROI measurements were not obtained from the cortical gray matter, as it was not possible to avoid partial volume averaging from adjacent CSF or subcortical white matter. Because of section positioning error, T2 measurements were not obtained at the level of the centrum semiovale in two subjects. The ROIs (area, 10.09–23.97 mm<sup>2</sup>) were initially positioned on the images obtained with a TE of 30 ms, as this provided the best image contrast, and then copied onto the other three images. Consistency of positioning was ensured by having a single investigator (S.J.C.) place all ROIs. This investigator was unaware of the infant's PMA. ROIs were positioned to prevent partial volume averaging from cortical gray matter or CSF. T2 values were calculated by using the fitting equation described earlier.

The analysis was repeated, including the placement of the ROIs, and test-retest consistency was evaluated by means of the coefficient of reliability (13). Statistical analysis of the data were performed by using STATA version 7 (STATA Corporation, College Station, TX). Unpaired  $t$  tests showed no significant difference between the right and left hemispheres ( $P > .05$ ). Therefore, a mean figure was calculated from the bilateral measurements to provide T2 values for each region. Linear regression analysis was performed to test the relationship between PMA and T2. Because four infants were imaged twice, robust variance estimates were used to account for the repeated measures. (*Robust* specifies that the Huber/white/sandwich estimator of variance is used in place of the conventional estimator of variance and adjusts the significance values obtained to take multiple measurements in individual infants into account [14]). Additionally, the data were divided into three groups on the basis of patient age:  $\leq 30$  weeks' PMA, 31–36 weeks' PMA, and term-equivalent age 37–41 weeks' PMA. Regional variation within each age group was assessed by using a one-way analysis of variance with a Bonferroni test for multiple comparisons.

## Results

### Phantom Tests

The T2 value of the gel phantom obtained by using nine separate CSE sequences was 315 ms  $\pm$  11, and the T2 value obtained by using the four-echo CSE sequence was 311 ms  $\pm$  18. The measured variability of the four-echo CSE sequence was  $<3\%$ .

### MR Images

No complications occurred during or immediately after the MR imaging studies. Fifteen infants had normal MR images; one infant had a unilateral germinal-layer hemorrhage; one had unilateral germinal layer-intraventricular hemorrhage; and one infant had minimal, bilateral ventricular dilatation. No infants had parenchymal white matter lesions.

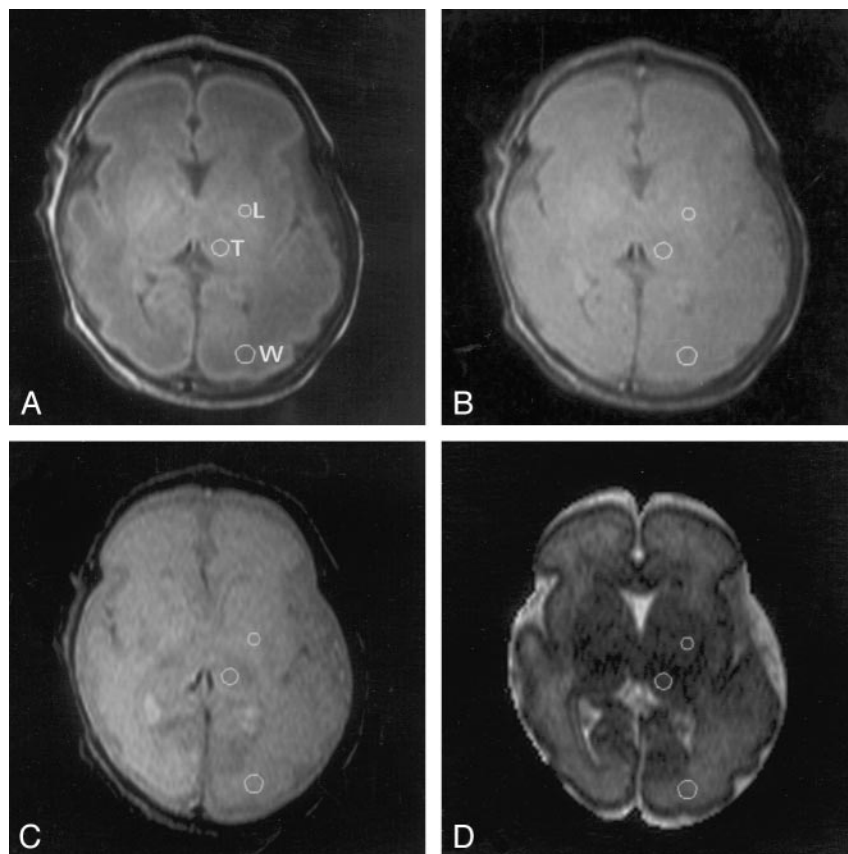
FIG 1. MR images in an infant at 30 weeks' PMA demonstrate positioning of the ROIs in the thalami (T), lentiform nuclei (L), and occipital white matter (W) on the left side.

A, TE of 30 ms.

B, TE of 60 ms.

C, TE of 110 ms.

D, TE of 600 ms.



### T2 Values

The mean T2 values at  $\leq 30$  weeks' PMA, 31–36 weeks' PMA, and at term-equivalent age are shown in Table 1.

### Relationship between T2 Values and PMA

A significant negative linear correlation between T2 values and PMA was demonstrated in the lentiform nuclei ( $P = .003$ ;  $r = -0.65$ ), the frontal white matter ( $P < .0001$ ;  $r = -0.93$ ), the occipital white matter ( $P < .0001$ ;  $r = -0.88$ ), and the central white matter at the level of the centrum semiovale ( $P < .0001$ ;  $r = -0.92$ ). The reduction in T2 values with increasing PMA in the thalami was not significant ( $P = .06$ ;  $r = -0.43$ ). Figure 4 shows the relationship between T2 and PMA for each region examined. Table 2 demonstrates the results of linear regression for each region.

### Regional Variation

There was no significant difference in T2 values between the thalamus and lentiform nuclei for any of the three age groups ( $P > .999$ ). However, T2 values in both the thalami and the lentiform nuclei were significantly lower than those in all white matter regions for all three age groups ( $P < .001$  for all regions). Within the white matter regions, there was no significant difference between T2 values in the frontal and those in the occipital white matter ( $P .999$  for all age groups). Before term-equivalent age, T2 values in

the central white matter of the centrum semiovale were significantly higher than those in both the frontal white matter ( $P < .001$  for  $\leq 30$  weeks' and 31–36 weeks' PMA) and the occipital white matter ( $P < .001$  for  $\leq 30$  weeks' and 31–36 weeks' PMA). At term-equivalent age, however, there was no significant difference in T2 values between the central white matter of the centrum semiovale and those of either the frontal white matter ( $P = .49$ ) or the occipital white matter ( $P .999$ ).

Test-retest variability was low for each region. Values were as follows: thalami, 2.8%; lentiform nuclei, 3.4%; frontal white matter, 3.2%; occipital white matter, 3.9%; and the central white matter at the level of the centrum semiovale, 2.7%.

### Discussion

The results of this study demonstrated that T2 values in the developing cerebral white matter and central gray matter structures decrease with increasing PMA in preterm infants. T2 relaxation times are time constants governing the decay of transverse magnetization after the application of a radio-frequency pulse, due to spin-spin interactions and local magnetic field inhomogeneities. Additionally, the diffusion of water molecules reduces T2 relaxation times. T2 values are related to the water content and whether the water is free or bound to macromolecules. The values are longer in free water, in which



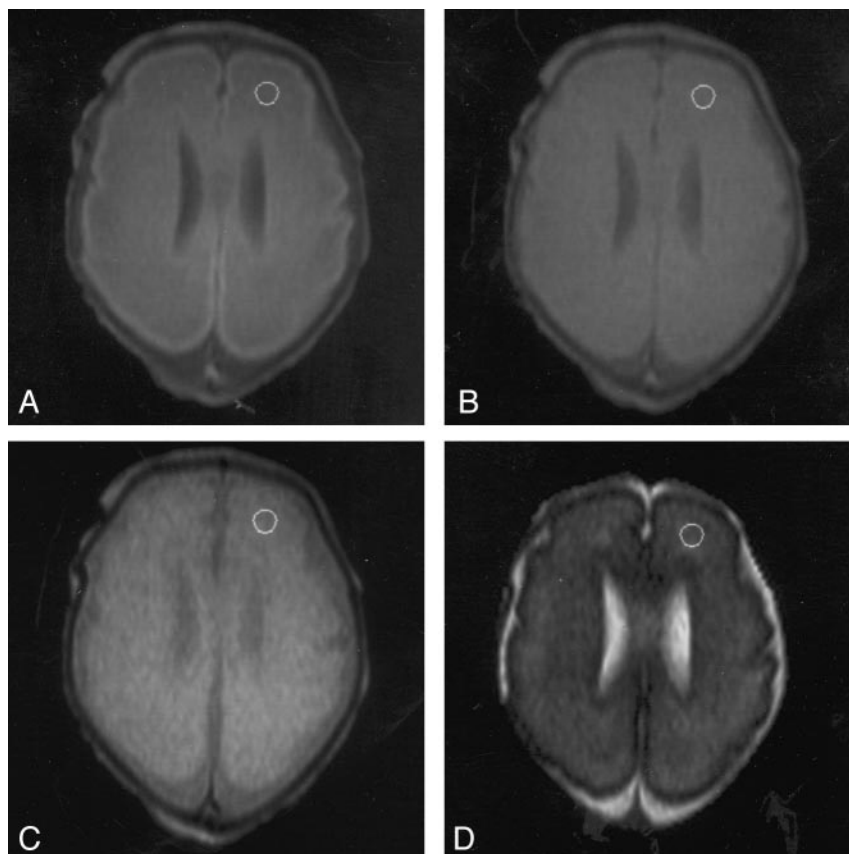


FIG 2. MR images in an infant at 27 weeks' PMA with minimal ventricular dilatation demonstrate positioning of the ROI in the frontal white matter on the left side.

A, TE of 30 ms.  
B, TE of 60 ms.  
C, TE of 110 ms.  
D, TE of 600 ms.

interactions between protons are weaker, than in bound water.

The four-echo CSE pulse sequence used in this study did not have built-in crusher gradients. Although this lack is potentially a source of error, the results obtained by using the gel phantom showed that this sequence was accurate when compared with several single-echo sequences. Additionally, insufficient TEs were acquired to examine multiexponential components of the T2 decay curves. The main advantage of this four-echo sequence was that T2 values of the preterm brain could be determined in a clinically acceptable time, which is extremely important in imaging this vulnerable patient group. The pulse sequence used in this study allowed only four sections; therefore, we positioned the sections to cover most of the cerebral white matter, as preterm birth is frequently associated with white matter disease (15, 16).

The T2 values obtained in the preterm brain in this study were higher than those reported in adults (17–22), and T2 values in the unmyelinated white matter were higher than those in central gray matter structures, which is the reverse of the values in the adult brain. Maturation decreases in T2 have been observed in other studies (6, 7, 23–27). The findings cannot be directly compared because different field strengths were used. However, the results of this study were similar to those of preterm infants at 37 weeks' PMA who underwent imaging at 2.35 T (thalamus,  $151 \text{ ms} \pm 11$ ; frontal white matter,  $266 \text{ ms} \pm 35$ ; occipital white matter,  $213 \text{ ms} \pm 28$ ) (7) and to

those in term-born neonates in the early neonatal period who underwent imaging at 2.4 T (thalamus,  $135.5 \text{ ms} \pm 12.9$ ; frontal white matter,  $228.1 \text{ ms} \pm 32.3$ ) (6). Additionally, in their MR spectroscopic study, Cady et al (28) reported T2 values of  $165 \text{ ms} \pm 18$  in the thalamus and  $223 \text{ ms} \pm 32$  in the parieto-occipital white matter in infants imaged at 32–42 weeks' PMA at 2.4 T.

In this study, the reduction in T2 values in the cerebral white matter over time in the very preterm brain is unlikely to be due to myelination, because myelination is not evident in the white matter of the cerebral hemispheres before 34 weeks' GA, as assessed at histologic examination (29). In addition, this finding is not demonstrated on MR images obtained before 36 weeks' PMA (30). Glycolipid, cholesterol, and protein in the brain increases as the neonatal brain matures, and the water decreases (31). The reduction in T2 with increasing PMA in the very preterm brain most likely reflects a reduction in the free water content. Additionally, premyelination changes, including the development of myelin precursors, may also contribute to the decrease in T2 values (32). Perinatal factors such as the time from delivery, the method of delivery, and the intravenous administration of fluid may exert an acute effect on the water content of the brain and, therefore, on the T2 value. However, too few patients were assessed in this study to allow us to address this issue.

Although Thornton et al (6) observed a significant negative linear correlation between T2 and PMA in

FIG 3. Images in an infant at 27 weeks' PMA demonstrate positioning of the ROI in the central white matter of the centrum semiovale on the left side.

A, TE of 30 ms.

B, TE of 60 ms.

C, TE of 110 ms.

D, TE of 600 ms.

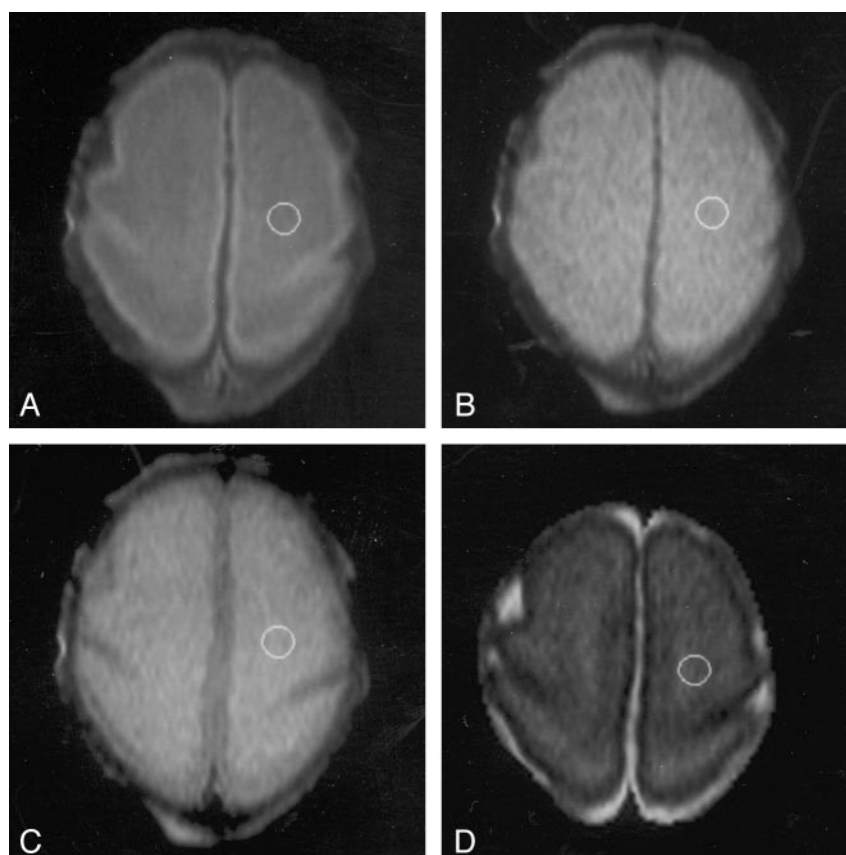


TABLE 1: Mean T2 values

Region	T2 Values, msec*		
	≤30 weeks' GA (n = 8)	31–36 weeks' GA (n = 9)	37–41 weeks' GA† (n = 5)
Thalamus	159.1 ± 13.5	157.4 ± 9.1	143.2 ± 15.1
Lentiform	169.5 ± 9.6	156.8 ± 12.8	143.2 ± 15.5
Frontal white matter	294.9 ± 7.9	274.1 ± 13.2	222.0 ± 18.2
Occipital white matter	296.8 ± 11.9	266.8 ± 20.8	211.4 ± 14.6
Central white matter at the level of the centrum semiovale	331.2 ± 12.8‡	309.4 ± 14.8	202.4 ± 8.7

\* Data are the mean ± SD.

† Term-equivalent age.

‡ n = 6.

the thalamus in term infants, the decrease in T2 with increasing PMA in this study just failed to reach significance. In addition, the rate of decrease in T2 values with increasing age in the lentiform nuclei was less than that of the cerebral white matter. This observation probably reflects the earlier commencement of myelination in central gray matter structures and that myelination is still underway at the PMAs studied here. Indeed, microscopy shows myelination in the globus pallidus, the pallidothalamic fibers of the posterior limb of the internal capsule, and the ventrolateral nuclei of the thalamus at 25 weeks' GA (33). Other fibers and nuclei become myelinated later. For example, ascending thalamocortical fibers do not demonstrate histologic evidence of myelination before 32 weeks' GA (33), and the cycle of myelination of the fibers of the outer segment of the

globus pallidus continues beyond 1 year post term (34). In this study, we did not attempt to differentiate separate nuclei and fiber bundles of the thalamus and lentiform nuclei, as these structures are too small in the preterm brain for us to confidently avoid positioning error and partial volume averaging. In addition to myelination, the maturation of astrocytes and neurons within the thalami may also contribute to a reduction in T2 values. As neurons enlarge, the extracellular space—and therefore the free water content—decreases. Increasing neuronal complexity results in more bound molecules, which may also contribute to a reduction in T2 values.

Before term-equivalent age, T2 values in the white matter of the centrum semiovale were higher than those in the frontal or occipital white matter. However, at term-equivalent age, we did not find a re-

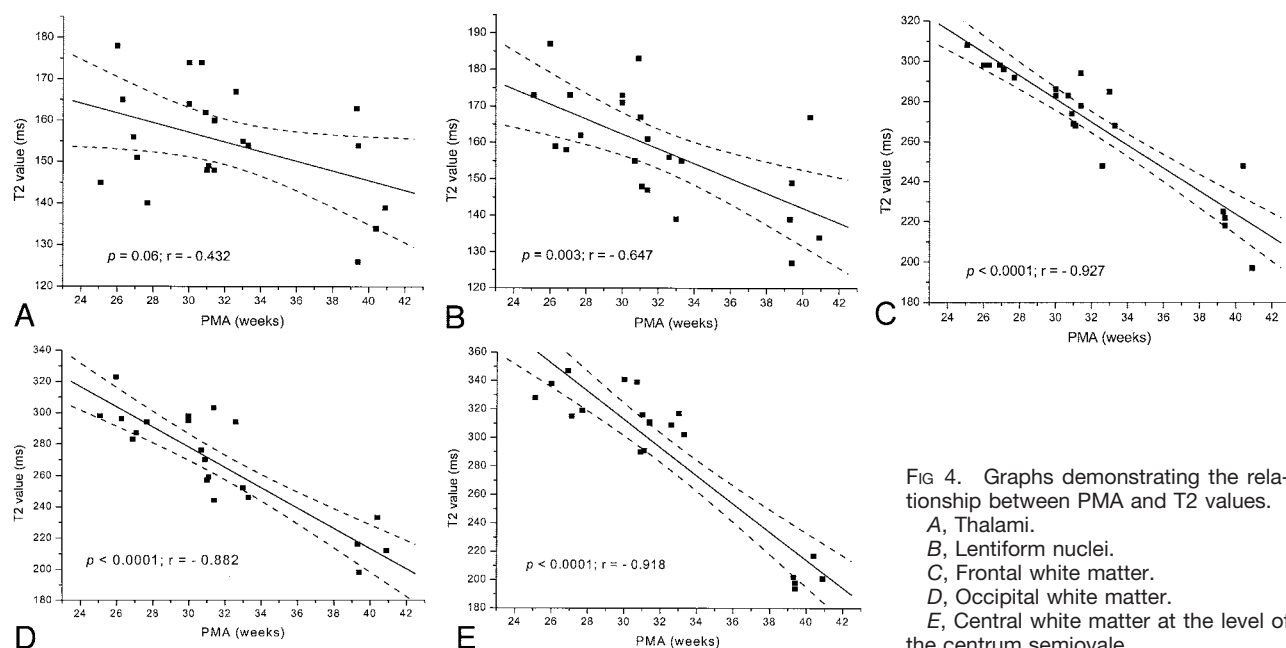


FIG 4. Graphs demonstrating the relationship between PMA and T2 values.

A, Thalamus.  
B, Lentiform nuclei.  
C, Frontal white matter.  
D, Occipital white matter.  
E, Central white matter at the level of the centrum semiovale.

TABLE 2: Results of linear regression

Region	Linear Regression Equation	P Value	r	n
Thalamus	$T2 = -1.16(PMA) + 192.09$	.06	-0.43	22
Lentiform nucleus	$T2 = -2.04(PMA) + 223.44$	.003	-0.65	22
Frontal white matter	$T2 = -5.75(PMA) + 453.82$	<.0001	-0.93	22
Occipital white matter	$T2 = -6.48(PMA) + 472.47$	<.0001	-0.88	22
White matter of the centrum semiovale	$T2 = -9.88(PMA) + 609.06$	<.0001	-0.92	20

gional variation in T2 values in the white matter. A regional variation in T2 values in the white matter at this age has been reported previously and attributed to regional variations in myelination and premyelination events (7). In most term neonates, myelin is evident in the corticospinal tracts at the level of the centrum semiovale on MR images; myelin is rarely evident in the optic radiations, and it is not evident in the frontal white matter (35). Furthermore, myelination is evident in the corona radiata and corticospinal tracts at the level of the centrum semiovale in preterm infants at term-equivalent age, but it is not demonstrated in the optic radiations or frontal white matter (30). Therefore, one would expect T2 values to be lower in the central white matter of the centrum semiovale than in the frontal or occipital white matter. While the mean T2 values in the central white matter of the centrum semiovale at term-equivalent age were slightly lower than those in the other white matter regions, these values were not significantly different. This finding may have been due to the small number of infants studied at this age ( $n = 5$ ).

In this study, we included only apparently healthy but extremely preterm infants who had brain MR images without any focal changes of known pathologic importance. We also included only infants whose outcome was considered normal in terms of their developmental quotient, neurologic status, and head growth between 1 and 2 years. Therefore, we consider these infants optimal

within the limits of our ability to assess them at this young age. We accept the fact that the concept of normality in this extremely preterm population is relative and that they may have some neurodevelopmental problems that become apparent only at an older age (36, 37). Within these caveats, our T2 data may be representative of normal findings. Knowledge of the changes in T2 values with development in such preterm infants is essential to the assessment of MR images in this group of infants.

## Conclusion

T2 values in the cerebral white matter and central gray matter structures decrease from 25 weeks' GA to term. This rate of decrease is greatest in the central white matter at the level of the centrum semiovale and least in the thalamus. In the cerebral white matter, these reductions in T2 commence before myelination and probably reflect a reduction in the cerebral water content.

## References

1. Battin MR, Maalouf EF, Counsell SJ, et al. Magnetic resonance imaging of the brain in very preterm infants: visualization of the germinal matrix, early myelination, and cortical folding. *Pediatrics* 1998;101:957-962
2. Huppi PS, Warfield S, Kikinis R, et al. Quantitative magnetic resonance imaging of brain development in premature and mature newborns. *Ann Neurol* 1998;43:224-235

3. Sie LT, van der Knaap MS, Wezel-Meijler G, Valk J. **MRI assessment of myelination of motor and sensory pathways in the brain of preterm and term-born infants.** *Neuropediatrics* 1997;28:97-105
4. van der Knaap MS, Wezel-Meijler G, Barth PG, Barkhof F, Ader HJ, Valk J. **Normal gyration and sulcation in preterm and term neonates: appearance on MR images.** *Radiology* 1996;200:389-396
5. Childs AM, Ramenghi LA, Evans DJ, et al. **MR features of developing periventricular white matter in preterm infants: evidence of glial cell migration.** *AJNR Am J Neuroradiol* 1998;19:971-976
6. Thornton JS, Amess PN, Penrice J, Chong WK, Wyatt JS, Ordidge RJ. **Cerebral tissue water spin-spin relaxation times in human neonates at 2.4 tesla: methodology and the effects of maturation.** *Magn Reson Imaging* 1999;17:1289-1295
7. Ferrie JC, Barantin L, Saliba E, et al. **MR assessment of the brain maturation during the perinatal period: quantitative T2 MR study in premature newborns.** *Magn Reson Imaging* 1999;17:1275-1288
8. *The Griffiths Mental Development Scales 1996 Revision.* Oxon: The Test Agency; 1996.
9. Haataja L, Mercuri E, Regev R, et al. **Optimality score for the neurological examination of the infant at 12 and 18 months of age.** *J Pediatr* 1999;135:153-161
10. Frisone MF, Mercuri E, Laroche S, et al. **Prognostic value of the neurological optimality score in preterm infants born under 31 weeks gestation examined between 9 and 18 months.** *J Pediatr* 2002;140:57-60
11. Battin M, Maalouf EF, Counsell S, et al. **Physiological stability of preterm infants during magnetic resonance imaging.** *Early Hum Dev* 1998;52:101-110
12. Hall AS, Young IR, Davies FJ, Mohapatra SN. **A dedicated magnetic resonance system in a neonatal intensive therapy unit.** In: Bradley WG, Bydder GM, eds. *Advanced MR Imaging Techniques.* London: Martin Dunitz; 1997:281-290
13. Bland JM, Altman DG. **Statistical methods for assessing agreement between two methods of clinical measurement.** *Lancet* 1986;327:307-310
14. Huber HP. **On the problem of variance - analytical reliability estimation in correlated measurement errors.** *Arch Gesamte Psychol* 1967;119:288-296
15. Maalouf EF, Duggan PJ, Rutherford MA, et al. **Magnetic resonance imaging of the brain in a cohort of extremely preterm infants.** *J Pediatr* 1999;135:351-357
16. Kuban KC, Leviton A. **Cerebral palsy.** *N Engl J Med* 1994;330:188-195
17. Breger RK, Yetkin FZ, Fischer ME, Papke RA, Houghton VM, Rimm AA. **T1 and T2 in the cerebrum: correlation with age, gender, and demographic factors.** *Radiology* 1991;181:545-547
18. Kjos BO, Ehman RL, Brant-Zawadzki M, Kelly WM, Norman D, Newton TH. **Reproducibility of relaxation times and spin density calculated from routine MR imaging sequences: clinical study of the CNS.** *AJR Am J Roentgenol* 1985;144:1165-70
19. Vymazal J, Righini A, Brooks RA, et al. **T1 and T2 in the brain of healthy subjects, patients with Parkinson disease, and patients with multiple system atrophy: relation to iron content.** *Radiology* 1999;211:489-495
20. Whittall KP, MacKay AL, Graeb DA, Nugent RA, Li DK, Paty DW. **In vivo measurement of T2 distributions and water contents in normal human brain.** *Magn Reson Med* 1997;37:34-43
21. Agartz I, Saaf J, Wahlund LO, Wetterberg L. **T1 and T2 relaxation time estimates in the normal human brain.** *Radiology* 1991;181:537-543
22. Wansapura JP, Holland SK, Dunn RS, Ball WS, Jr. **NMR relaxation times in the human brain at 3.0 tesla.** *J Magn Reson Imaging* 1999;9:531-538
23. Holland BA, Haas DK, Norman D, Brant-Zawadzki M, Newton TH. **MRI of normal brain maturation.** *AJNR Am J Neuroradiol* 1986;7:201-208
24. Ono J, Kodaka R, Imai K, et al. **Evaluation of myelination by means of the T2 value on magnetic resonance imaging.** *Brain Dev* 1993;15:433-438
25. Baierl P, Forster C, Fendel H, Naegele M, Fink U, Kenn W. **Magnetic resonance imaging of normal and pathological white matter maturation.** *Pediatr Radiol* 1988;18:183-189
26. Miot E, Hoffschir D, Poncy JL, Masse R, Le Pape A, Akoka S. **Magnetic resonance imaging in vivo monitoring of T2 relaxation time: quantitative assessment of primate brain maturation.** *J Med Primatol* 1995;24:87-93
27. Fulford J, Ong S, Baker PN, James D, Gowland PA. **Fetal brain maturation measured using T2.** In: *Proceedings of the International Society for Magnetic Resonance in Medicine.* Berkeley: International Society for Magnetic Resonance in Medicine; 2002:462
28. Cady EB, Penrice J, Amess PN, et al. **Lactate, N-acetylaspartate, choline and creatine concentrations, and spin-spin relaxation in thalamic and occipito-parietal regions of developing human brain.** *Magn Reson Med* 1996;36:878-886
29. Gilles FH, Shankle W, Dooling EC. **Myelinated tracts: growth patterns.** In: Gilles FH, Leviton A, Dooling EC, eds. *The Developing Human Brain: Growth and Epidemiological Neuropathology.* Boston: Wright; 1983:117-183
30. Counsell SJ, Maalouf EF, Fletcher AM, et al. **Magnetic resonance imaging assessment of myelination in the very preterm brain.** *AJNR Am J Neuroradiol* 2002;23:872-881
31. Dobbing J, Sands J. **Quantitative growth and development of human brain.** *Arch Dis Child* 1973;48:757-767
32. Miot-Noirault E, Barantin L, Akoka S, Le Pape A. **T2 relaxation time as a marker of brain myelination: experimental MR study of two neonatal animal models.** *J Neurosci Methods* 1997;72:5-14
33. Hasegawa M, Houdou S, Mito T, Takashima S, Asanuma K, Ohno T. **Development of myelination in the human fetal and infant cerebrum: a myelin basic protein immunohistochemical study.** *Brain Dev* 1992;14:1-6
34. Yakovlev PI, Lecours AR. **The myelogenic cycles of regional maturation of the brain.** In: Minowski A, ed. *Regional Development of the Brain in Early Life.* Oxford: Blackwell; 1967:3-70
35. Barkovich AJ. **MR of the normal neonatal brain: assessment of deep structures.** *AJNR Am J Neuroradiol* 1998;19:1397-1403
36. Marlow N, Roberts L, Cooke R. **Outcome at 8 years for children with birthweights of 1250g or less.** *Arch Dis Child* 1993;68:286-290
37. Botting N, Pows A, Cooke RW, Marlow N. **Attention deficit hyperactivity disorders and other psychiatric outcomes in very low birthweight children at 12 years.** *J Child Psychol Psychiatry* 1997;38:931-941